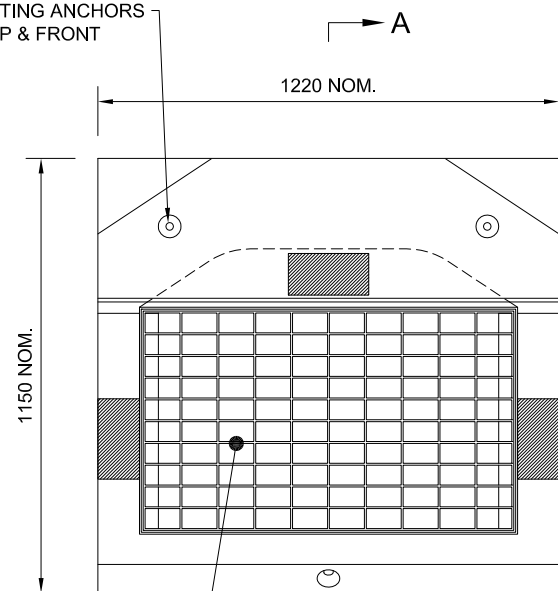


NOTES

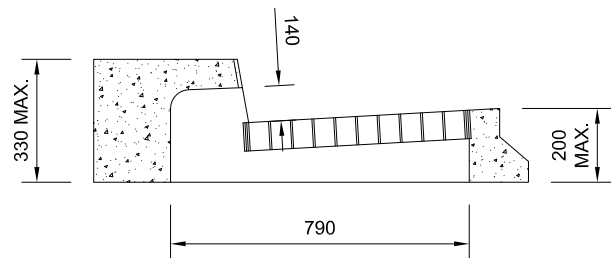
1. MAY BE USED WHERE SPACE IS LIMITED OR AS REPLACEMENT FOR DAMAGED MRC PRECAST TOP TYPE A.
2. C-M CONCRETE R.G.U. 1220mm - TYPE F, OR EQUIVALENT
3. CONCRETE N40/20 IN ACCORDANCE WITH AS 3600.
4. EACH LIFTING ANCHOR TO BE "SWIFTLIFT" OR EQUIVALENT 1,3 TONNE, GALVANISED TO AS 4680 AND FITTED TO MANUFACTURERS' SPECIFICATION.
5. REINFORCEMENT TO AS 4671 SHALL BE PROVIDED BY THE DESIGNER TO OBTAIN THE STRENGTH REQUIRED TO PASS THE TEST CRITERIA DETAILED ON STD. DWG. A3-3887. THE LOAD DETAILED IN TABLE A SHALL BE APPLIED TO EACH LOCATION, SEPARATE TESTS AT EACH LOCATION.
6. ALL WELDS TO AS 1554.
7. STEEL PLATE HOT DIP GALVANISED TO AS 4680.
8. GRATE AND FRAME TO INCORPORATE HINGE & LOCKING DEVICE.
9. GRATE AND FRAME CLASS D TO AS 3996 DESIGN LOAD. BICYCLE SAFETY TESTING OF GRATE SHALL BE IN ACCORDANCE WITH AS 3996.
10. GRATE FRAME TO BE CAST INTO CONCRETE.
11. PRECAST CONCRETE UNITS AND GRATE/FRAMES MUST BE APPROVED BY THE SUPERINTENDENT PRIOR TO USE.
12. REFER PROJECT DRAWINGS FOR LAYOUT OF GULLY INLETS.
13. PROVIDE 10mm MORTAR (1 CEMENT: 3 FINE SAND) JOINT BETWEEN GULLY PIT AND PRECAST UNITS.
14. ALL DIMENSIONS IN MILLIMETRES.

LIFTING ANCHORS
TOP & FRONT




GULLY GRATE WITH
FRAME 900 NOM x
600 NOM CLEAR
OPENING

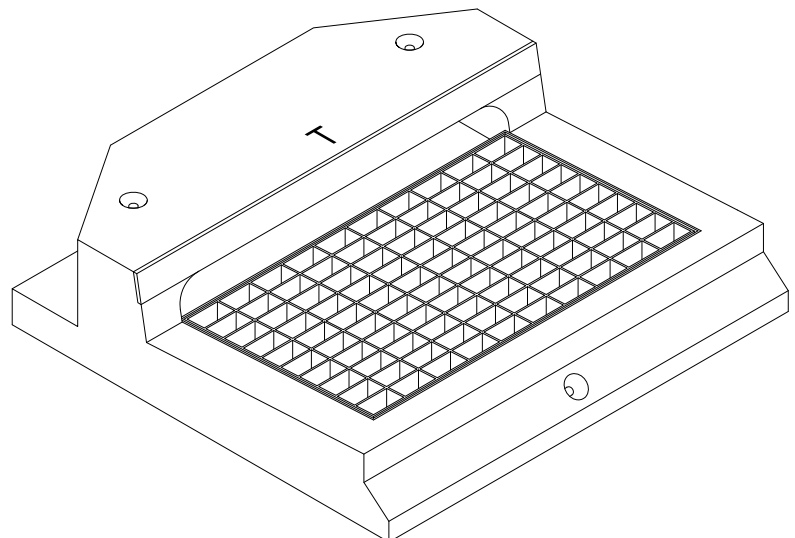
**CHANNEL LIP IN LINE
PLAN**



**CHANNEL LIP IN LINE
SECTION A-A**

LEGEND

- T** TEXT 'DUMP NO WASTE' 'PROTECT THE REEF' (40MM HIGH LETTERS, IMPRINTED 5MM INTO CONCRETE.)
-  LOAD TEST AREA (200 x 150) REFER NOTE 3.



**CHANNEL LIP IN LINE
ISOMETRIC VIEW**

FILE NAME \STANDARD DRAWINGS\STORMWATER\A4-00544

B	07.07.15	DRAWING TITLE AMENDED	CEB
NO.	DATE	DESCRIPTION	APPVD
AMENDMENTS AND REVISIONS			

DRAWN A.P.C.	SIGNED A.P.C.	DATE 23.06.15
DESIGNED	SIGNED	DATE
CHECKED E.J.N.	SIGNED E.J.N.	DATE 23.06.15
MANAGER TECHNICAL SERVICES		
ORIGINAL SIGNED BY		
G. HAWES	RPEQ 5693	DATE

DIRECTOR
ENGINEERING AND
COMMERCIAL INFRASTRUCTURE

ORIGINAL SIGNED BY
JASON DEVITT

DATE 03.07.15



WORKS JOB No.	DRAWING No. A4-00544	AMEND. B
---------------	-------------------------	-------------

STANDARD
1220 NOMINAL WIDTH
PRECAST GULLY INLET UNIT
REPLACEMENT OF TYPE 'A' UNITS ONLY