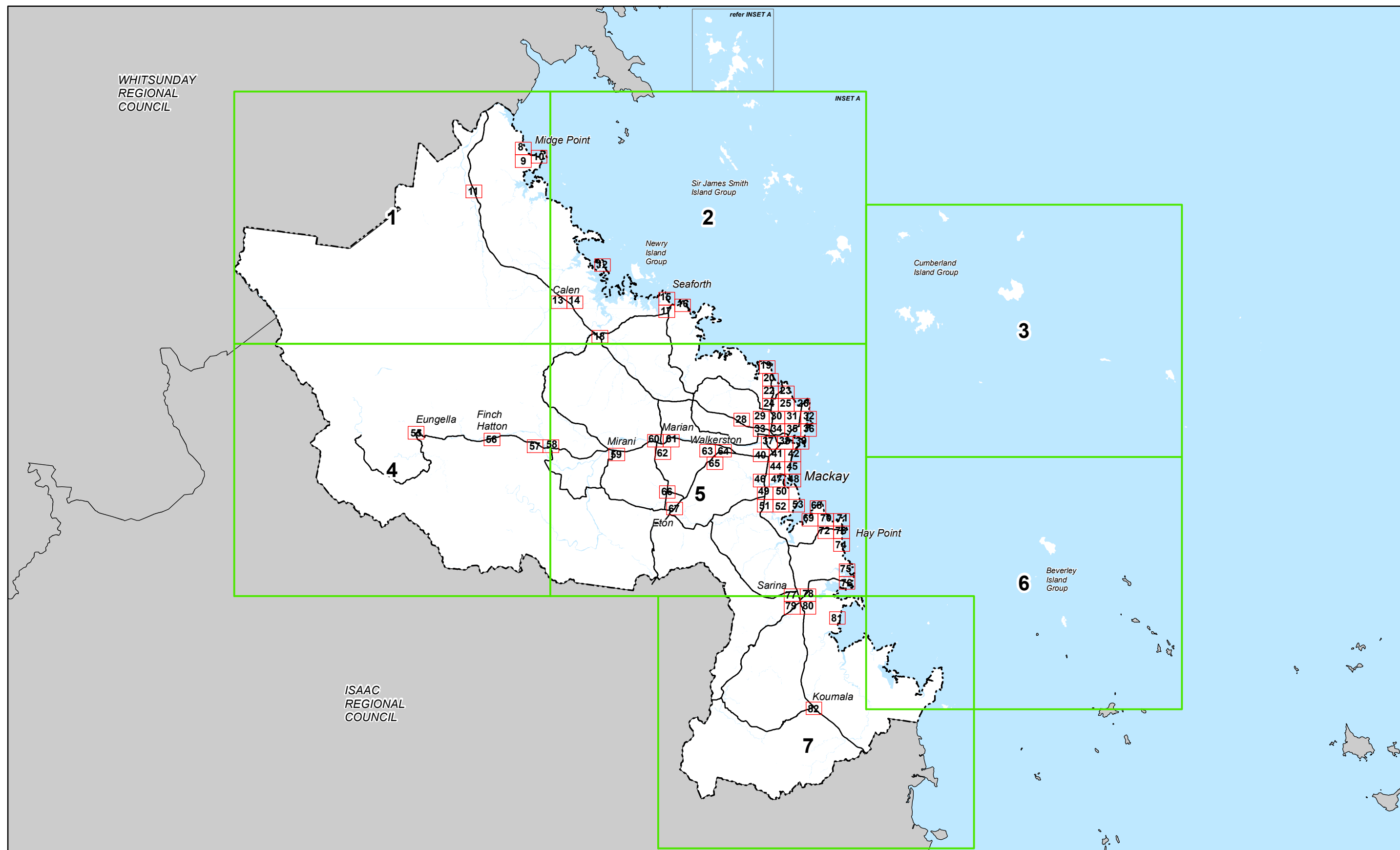
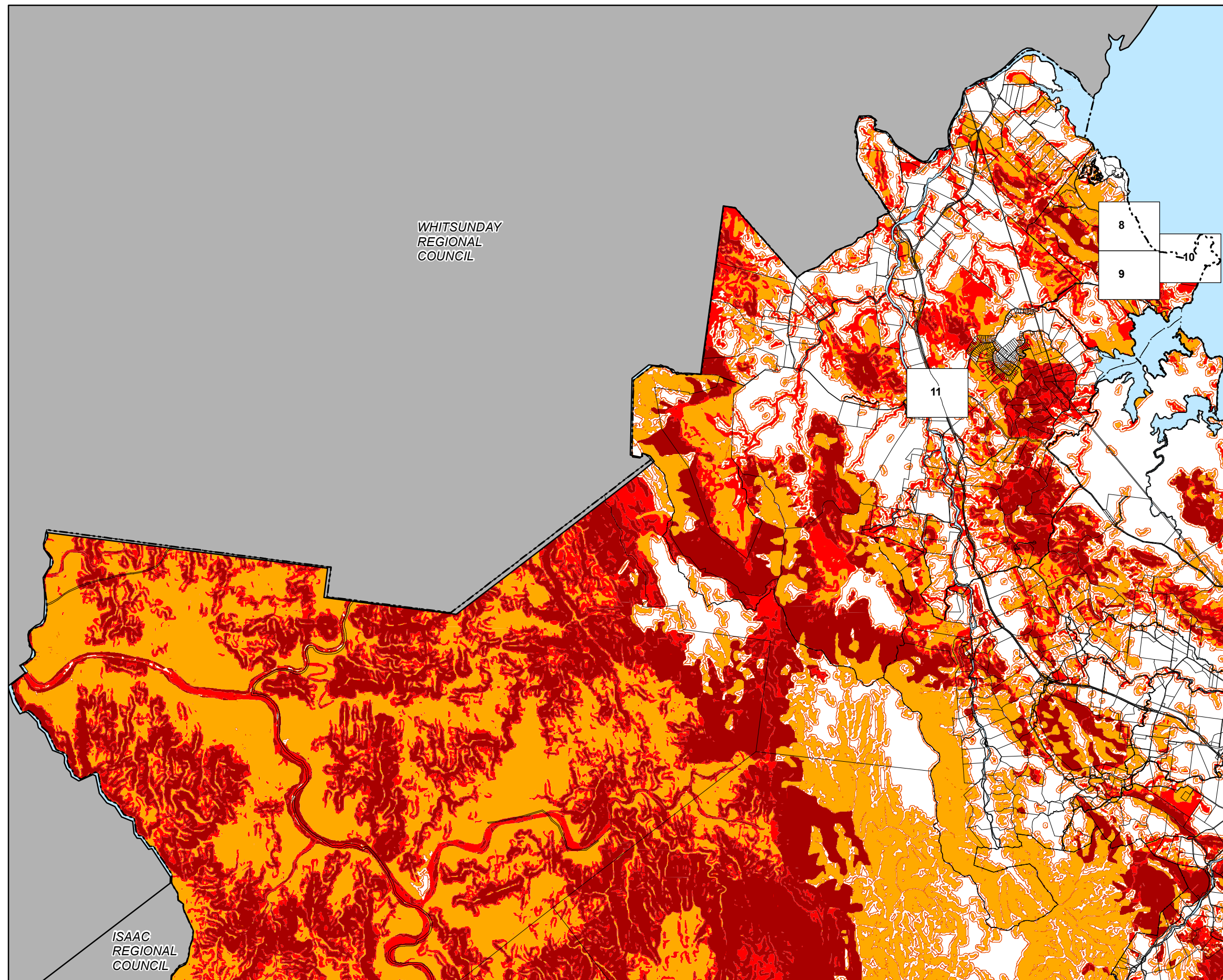


GRID INDEX - BUSHFIRE HAZARD OVERLAY MAPS





Development Constraints

Bushfire Hazard Areas

- Very high bushfire hazard area
- High bushfire hazard area
- Medium bushfire hazard area
- Within 100m of a bushfire hazard area

Cadastral

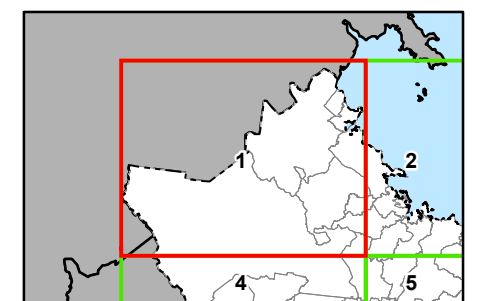
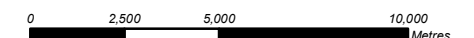
- Local Government Boundary
- Cadastral - June 2016 (Sourced DNRM)
- Suburb or Locality
- Waterway or Waterbody

Bushfire Hazards Overlay data was supplied by the Queensland Government (Q Spatial) and created by the Public Safety Business Agency (dated 15 July 2015). This data is to be used as a guide only for planning purposes.

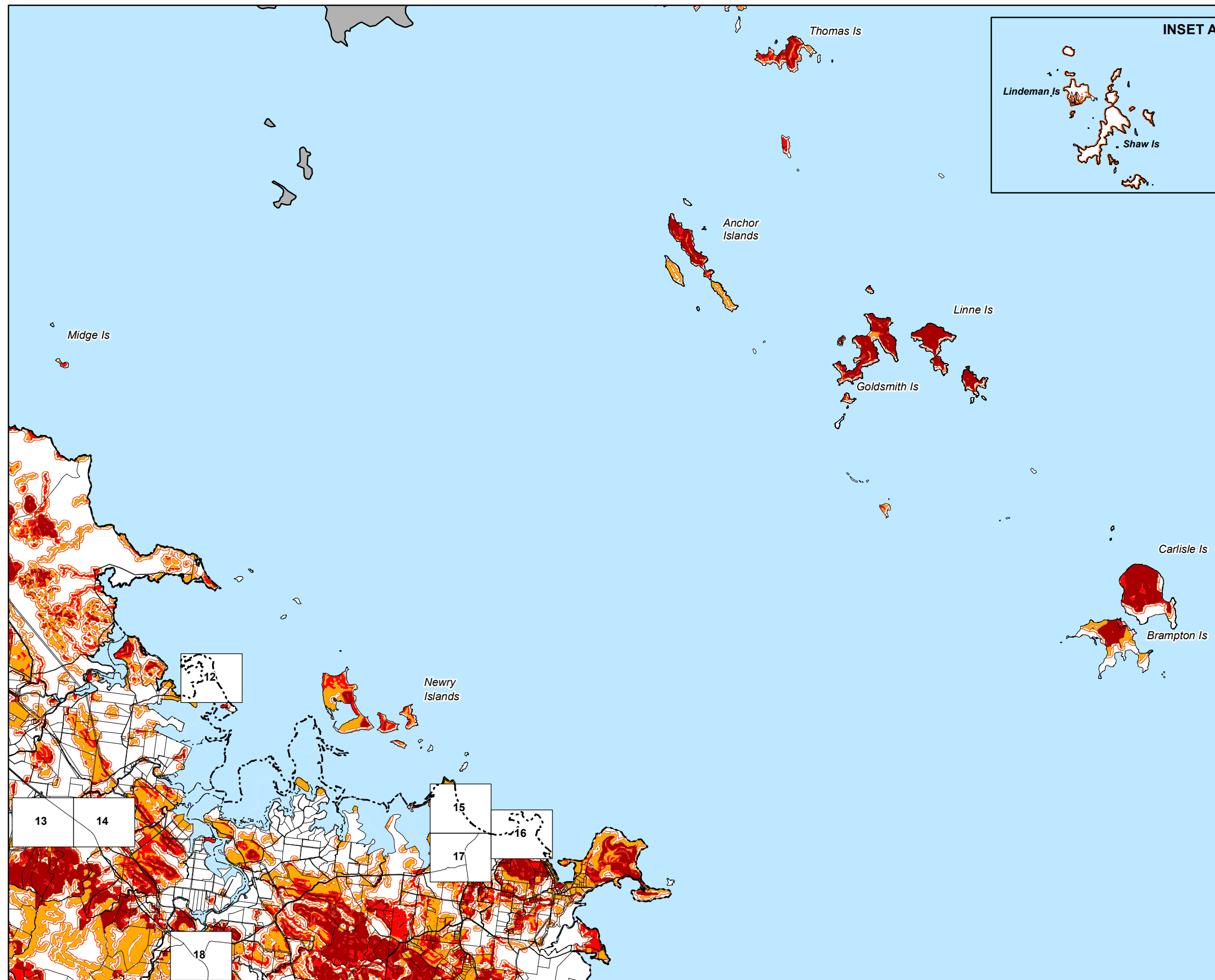
While every care is taken to ensure the accuracy of this product Mackay Regional Council makes no representations or warranties about the accuracy, reliability, completeness or suitability for any particular purpose and disclaims all responsibility and all liability (including without limitation, liability in negligence) or all expenses, losses, damages (including indirect or consequential damage) and costs you may incur as a result of this product being inaccurate or incomplete in any way or for any reason.

© Copyright Mackay Regional Council 2017
Gazettal Date: 30 June 2017
QPP Version 4.0
Geocentric Datum of Australia 1994 (GDA94)

Approx Scale @ A3 1:200,000



Bushfire Hazard Overlay Map - BH - 1



INSET A



Development Constraints

Bushfire Hazard Areas

- Very high bushfire hazard area
- High bushfire hazard area
- Medium bushfire hazard area
- Within 100m of a bushfire hazard area

Cadastral

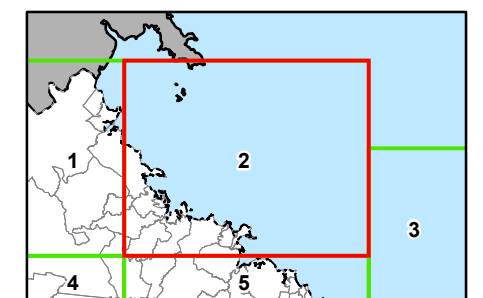
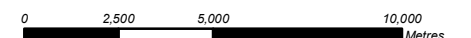
- Local Government Boundary
- Cadastre - June 2016 (Sourced DNRM)
- Suburb or Locality
- Waterway or Waterbody

Bushfire Hazards Overlay data was supplied by the Queensland Government (Q Spatial) and created by the Public Safety Business Agency (dated 15 July 2015). This data is to be used as a guide only for planning purposes.

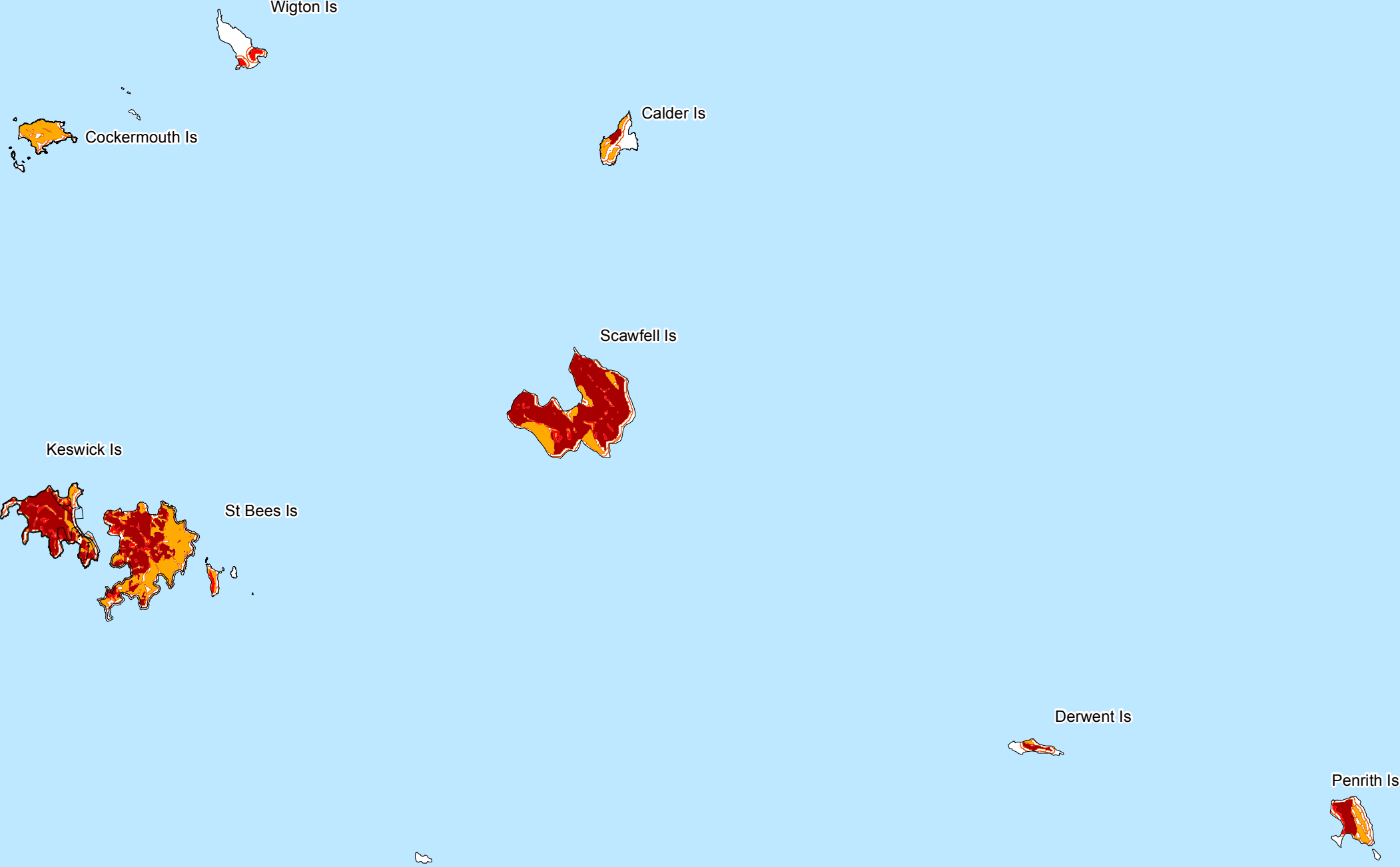
While every care is taken to ensure the accuracy of this product Mackay Regional Council makes no representations or warranties about the accuracy, reliability, completeness or suitability for any particular purpose and disclaims all responsibility and all liability (including without limitation, liability in negligence) or all expenses, losses, damages (including indirect or consequential damage) and costs you may incur as a result of this product being inaccurate or incomplete in any way or for any reason.

© Copyright Mackay Regional Council 2017
Gazetted Date: 30 June 2017
QPP Version 4.0
Geocentric Datum of Australia 1994 (GDA94)

Approx Scale @ A3 1:200,000



Bushfire Hazard Overlay Map - BH - 2



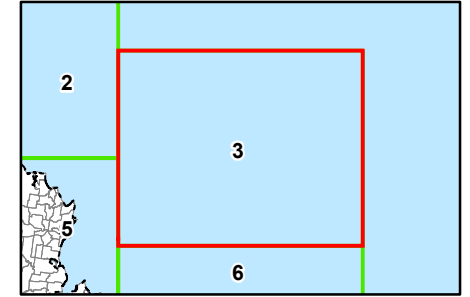
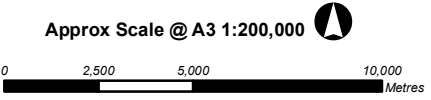
Development Constraints

- Bushfire Hazard Areas**
- Very high bushfire hazard area
 - High bushfire hazard area
 - Medium bushfire hazard area
 - Within 100m of a bushfire hazard area
- Cadastral**
- Local Government Boundary
 - Cadastral - June 2016 (Sourced DNRM)
 - Suburb or Locality
 - Waterway or Waterbody

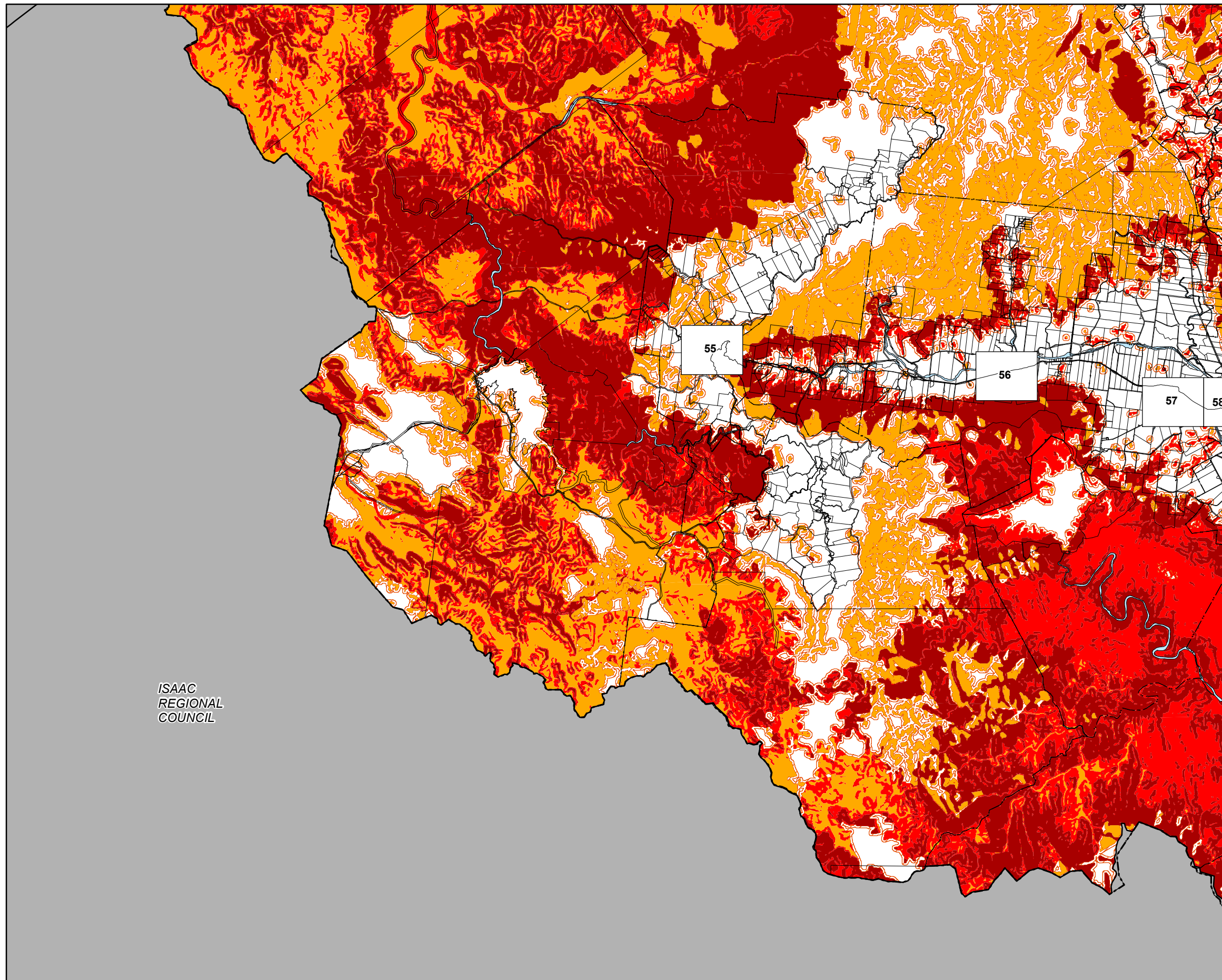
Bushfire Hazards Overlay data was supplied by the Queensland Government (Q Spatial) and created by the Public Safety Business Agency (dated 15 July 2015). This data is to be used as a guide only for planning purposes.

While every care is taken to ensure the accuracy of this product Mackay Regional Council makes no representations or warranties about the accuracy, reliability, completeness or suitability for any particular purpose and disclaims all responsibility and all liability (including without limitation, liability in negligence) or all expenses, losses, damages (including indirect or consequential damage) and costs you may incur as a result of this product being inaccurate or incomplete in any way or for any reason.

© Copyright Mackay Regional Council 2017
Gazetted Date: 30 June 2017
QPP Version 4.0
Geocentric Datum of Australia 1994 (GDA94)



Bushfire Hazard Overlay Map - BH - 3



ISAAC
REGIONAL
COUNCIL

Development Constraints

Bushfire Hazard Areas

- Very high bushfire hazard area
- High bushfire hazard area
- Medium bushfire hazard area
- Within 100m of a bushfire hazard area

Cadastral

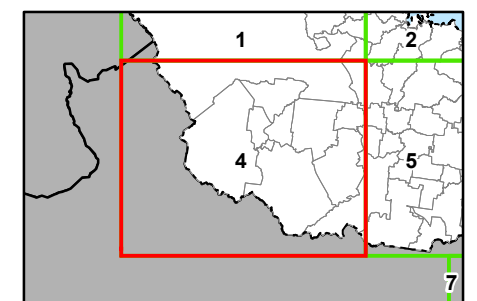
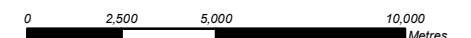
- Local Government Boundary
- Cadastre - June 2016 (Sourced DNRM)
- Suburb or Locality
- Waterway or Waterbody

Bushfire Hazards Overlay data was supplied by the Queensland Government (Q Spatial) and created by the Public Safety Business Agency (dated 15 July 2015). This data is to be used as a guide only for planning purposes.

While every care is taken to ensure the accuracy of this product Mackay Regional Council makes no representations or warranties about the accuracy, reliability, completeness or suitability for any particular purpose and disclaims all responsibility and all liability (including without limitation, liability in negligence) or all expenses, losses, damages (including indirect or consequential damage) and costs you may incur as a result of this product being inaccurate or incomplete in any way or for any reason.

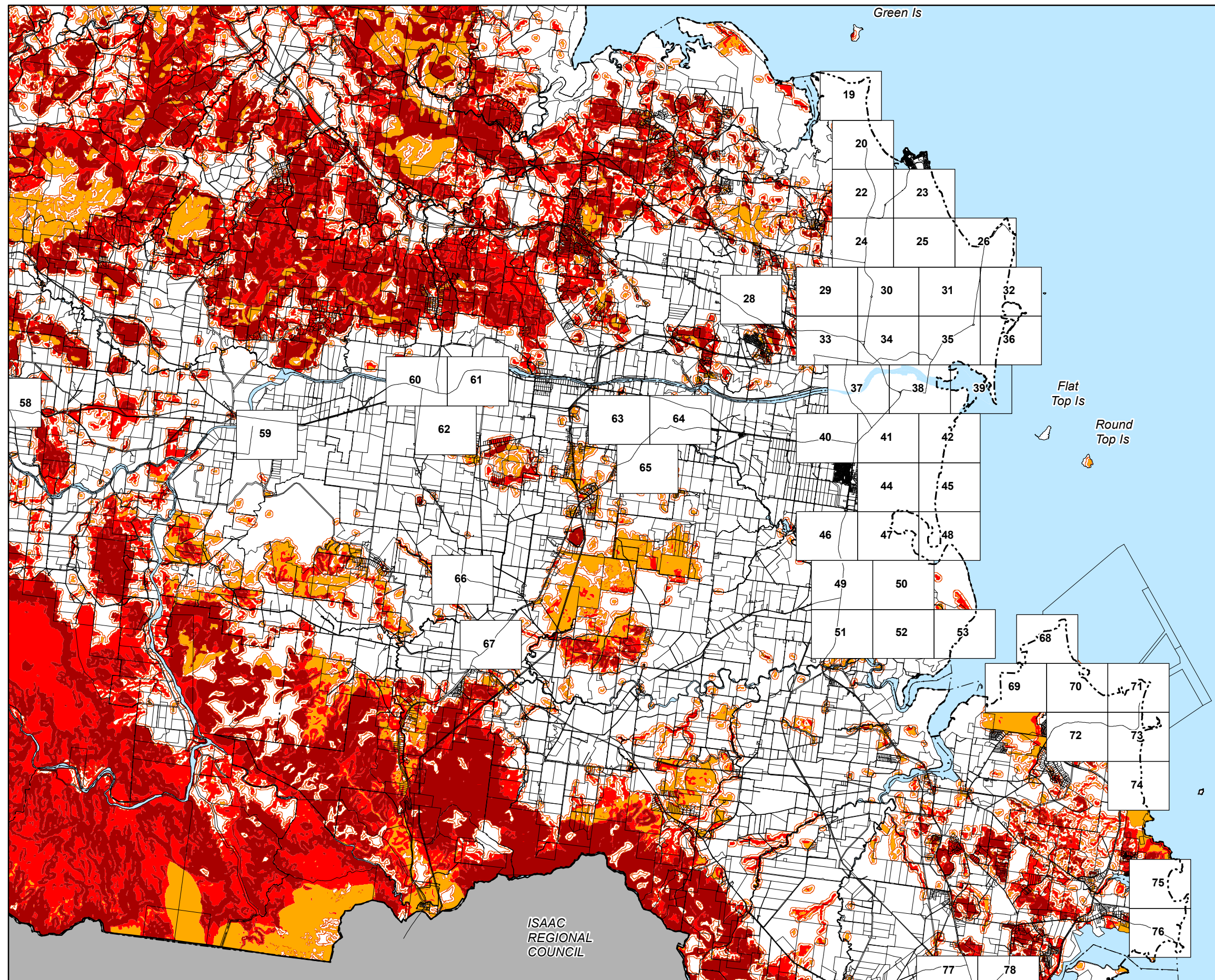
© Copyright Mackay Regional Council 2017
Gazettal Date: 30 June 2017
QPP Version 4.0
Geocentric Datum of Australia 1994 (GDA94)

Approx Scale @ A3 1:200,000



Bushfire Hazard Overlay Map - BH - 4

VERSION 1.0



Development Constraints

Bushfire Hazard Areas

- Very high bushfire hazard area
- High bushfire hazard area
- Medium bushfire hazard area
- Within 100m of a bushfire hazard area

Cadastral

- Local Government Boundary
- Cadastre - June 2016 (Sourced DNRM)
- Suburb or Locality
- Waterway or Waterbody

Bushfire Hazards Overlay data was supplied by the Queensland Government (Q Spatial) and created by the Public Safety Business Agency (dated 15 July 2015). This data is to be used as a guide only for planning purposes.

While every care is taken to ensure the accuracy of this product Mackay Regional Council makes no representations or warranties about the accuracy, reliability, completeness or suitability for any particular purpose and disclaims all responsibility and all liability (including without limitation, liability in negligence) or all expenses, losses, damages (including indirect or consequential damage) and costs you may incur as a result of this product being inaccurate or incomplete in any way or for any reason.

© Copyright Mackay Regional Council 2017
Gazettal Date: 30 June 2017
QPP Version 4.0
Geocentric Datum of Australia 1994 (GDA94)

Approx Scale @ A3 1:200,000

