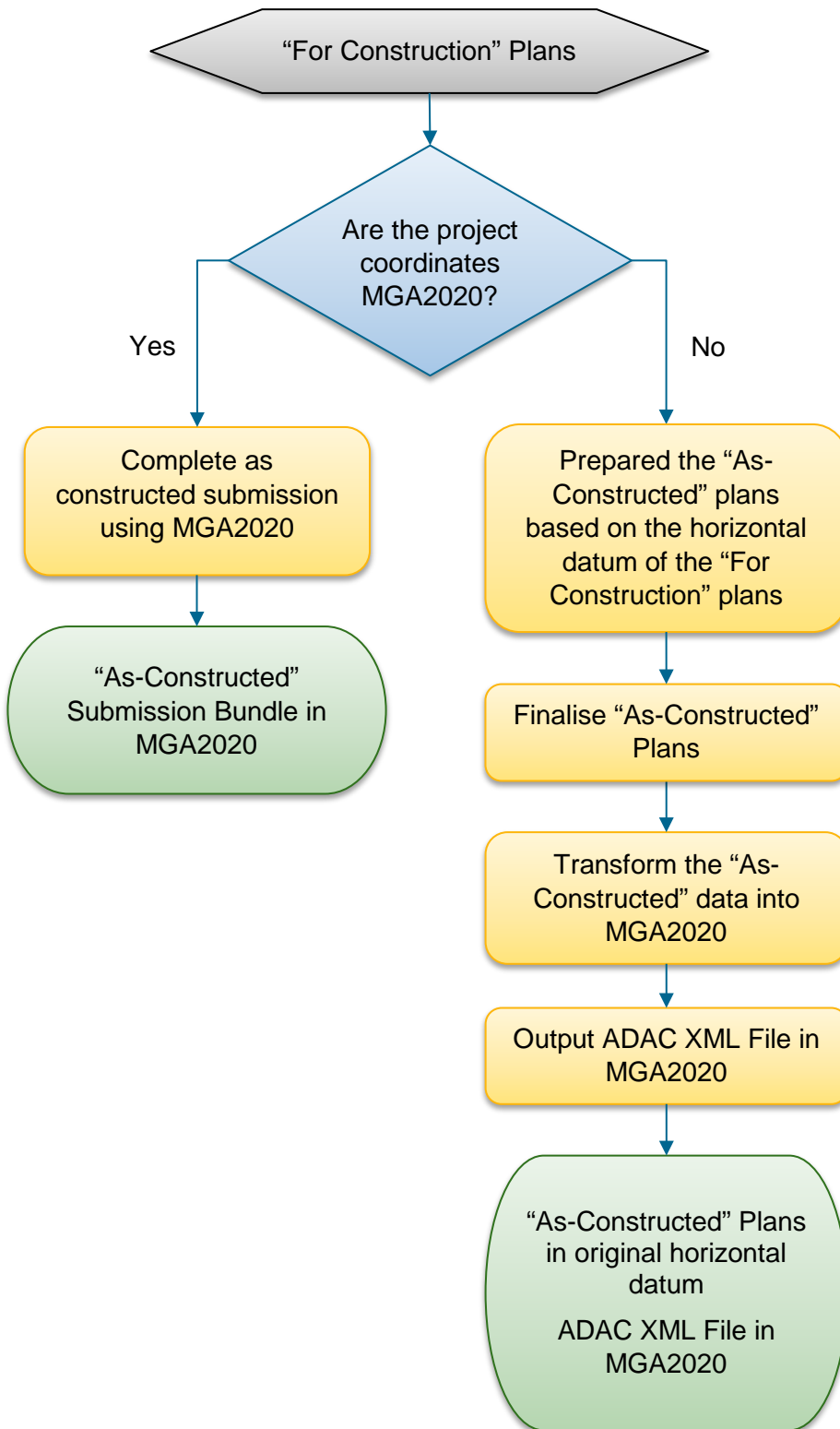


What datum do I use for my “As-Constructed” submission?



This fact sheet provides guidance on how to prepare as constructed data submissions to account for the adoption of GDA2020.

Further Information

Refer to the D20 Drawing and Documentation Guidelines and ADAC Guidelines on Mackay Regional Council's website:

https://www.mackay.qld.gov.au/business/planning_and_development/design_and_construction_requirements/design_guidelines

General information and resources relating to the datum modernisation – including a simple explanatory animation, frequently asked questions, fact sheets, technical tools and progress updates – are available on the ICSM website:

www.icsm.gov.au

