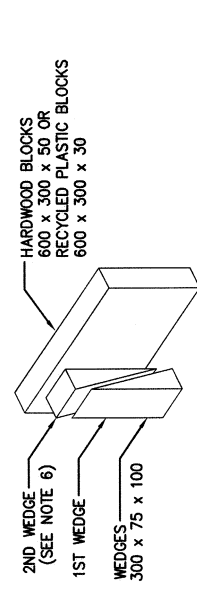
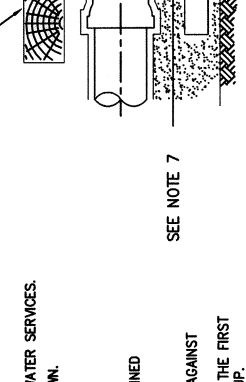
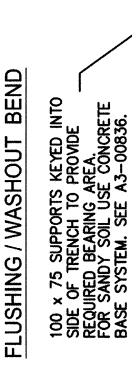
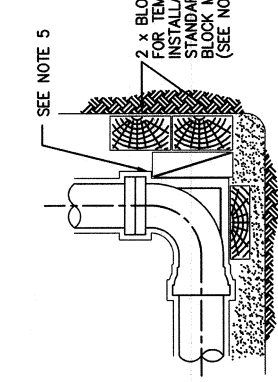
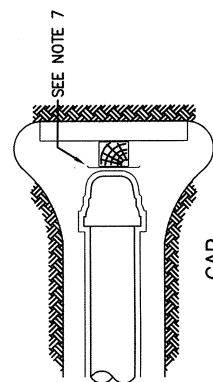


# ALLOWABLE APPLICATIONS FOR TIMBER & RECYCLED PLASTIC THRUST BLOCKS

FOR TEST PRESSURE OF 1000 kPa (NOM 100 m HEAD) AND BELOW  
FOR FITTINGS NOT MARKED WITH "•" IN TABLE, CONCRETE  
THRUST BLOCKS ARE REQUIRED IN ACCORDANCE WITH A3-00836.

FITTINGS	SOIL CLASSIFICATIONS & ALLOWABLE HORIZONTAL BEARING PRESSURE														
	STIFF CLAY MEDIUM DENSE SAND DESIGN HEAD (m)	50 kPa AHBP	VERY STIFF CLAY DENSE SAND/GRAVEL DECOMPOSED ROCK DESIGN HEAD (m)	100 kPa AHBP	HARD CLAY SOUND ROCK DESIGN HEAD (m)	200 kPa AHBP									
100 x 11.25"	40	80	100	120	140	40	80	100	120	140	40	80	100	120	140
100 x 22.5"	•	•	•	•	•	•	•	•	•	•	•	•	•	•	•
100 x 45"	•	•	•	•	•	•	•	•	•	•	•	•	•	•	•
100 x 90"	•	•	•	•	•	•	•	•	•	•	•	•	•	•	•
150 TEE/CAP	•	•	•	•	•	•	•	•	•	•	•	•	•	•	•
150 x 11.25"	•	•	•	•	•	•	•	•	•	•	•	•	•	•	•
150 x 22.5"	•	•	•	•	•	•	•	•	•	•	•	•	•	•	•
150 x 45"	•	•	•	•	•	•	•	•	•	•	•	•	•	•	•
150 x 90"	•	•	•	•	•	•	•	•	•	•	•	•	•	•	•
150 TEE/CAP	•	•	•	•	•	•	•	•	•	•	•	•	•	•	•
200 x 11.25"	•	•	•	•	•	•	•	•	•	•	•	•	•	•	•
200 x 22.5"	•	•	•	•	•	•	•	•	•	•	•	•	•	•	•
200 x 45"	•	•	•	•	•	•	•	•	•	•	•	•	•	•	•
200 x 90"	•	•	•	•	•	•	•	•	•	•	•	•	•	•	•
200 TEE/CAP	•	•	•	•	•	•	•	•	•	•	•	•	•	•	•
250 x 11.25"	•	•	•	•	•	•	•	•	•	•	•	•	•	•	•
250 x 22.5"	•	•	•	•	•	•	•	•	•	•	•	•	•	•	•
250 x 45"	•	•	•	•	•	•	•	•	•	•	•	•	•	•	•
250 x 90"	•	•	•	•	•	•	•	•	•	•	•	•	•	•	•
250 TEE/CAP	•	•	•	•	•	•	•	•	•	•	•	•	•	•	•
300 x 11.25"	•	•	•	•	•	•	•	•	•	•	•	•	•	•	•
300 x 22.5"	•	•	•	•	•	•	•	•	•	•	•	•	•	•	•
300 x 45"	•	•	•	•	•	•	•	•	•	•	•	•	•	•	•
300 x 90"	•	•	•	•	•	•	•	•	•	•	•	•	•	•	•
300 TEE/CAP	•	•	•	•	•	•	•	•	•	•	•	•	•	•	•



THIS SYSTEM MAY ONLY BE AUTHORISED AS A TEMPORARY SUPPORT SYSTEM BY SOME WATER AGENCIES. AFTER WRITTEN PERMISSION BY COUNCIL

MRC STANDARD DRAWINGS SUPERCEDES WSAA STANDARD DRAWINGS

<b>Mackay REGIONAL COUNCIL</b>		<b>STANDARD DRAWING</b> THRUST BLOCK DETAILS TIMBER & RECYCLED PLASTIC BLOCKS		DRAWING No. <b>A3-04282</b>
<b>WATER SERVICES</b>		EXECUTIVE MANAGER MACKAY WATER SERVICES RPEPQ 7506		AMEND. <b>C</b>
WSAA No. <b>WAT-1206</b>		DATE <b>27/5/09</b>		SHEET 1 OF 1
DRAWING FILE NAME M:\ESTS\Design\Projects\STD-DWG\MACKAY WATER\WSAA MRC\WAT CODE\A3-4282B		DATE OF LAST EDIT May 12, 2009		JOB No
SURVEY N/A		LEVEL DATUM A.H.D.		MCA-55
SURVEY FILE No N/A		APPVD.		DESCRIPTION
SLR		MCA-55		APPVD.
SLR		MCA-55		DESCRIPTION
WSAA ORIG		MCA-55		DESCRIPTION
NOV07		MCA-55		DESCRIPTION
OCT07		MCA-55		DESCRIPTION
NOV07		MCA-55		DESCRIPTION
C 5/3		AMEND		MCA-55

### NOTES:

- NOT TO BE USED WITHOUT THE WRITTEN APPROVAL OF WATER SERVICES.
- ALL DIMENSIONS IN MILLIMETRES UNLESS OTHERWISE SHOWN.
- PLACE BLOCKS IN THE TRENCH AS SHOWN AND AGAINST UNDISTURBED TRENCH WALL/FLOOR OR OTHER ACCEPTABLY COMPACTED MATERIAL.
- SOIL CLASSIFICATIONS USED IN THIS DRAWING ARE EXPLAINED IN A3-04276.
- INSTALLATION OF WEDGES:
  - PLACE THE FIRST WEDGE WITH ITS THIN END UP AND AGAINST THE FITTING.
  - PLACE THE SECOND WEDGE BETWEEN THE BLOCK AND THE FIRST WEDGE AND DRIVE HOME UNTIL ALL SLACK IS TAKEN UP.
- FOR DETAILS OF PRODUCTS USED IN THIS DRAWING REFER TO WSA-03 PART 2 OR MACKAY WATER & WASTE AUTHORISED PRODUCTS LIST.
- FOR PE FITTINGS AND FUSION BONDED COATED FITTING/VALVES PLACE ADDITIONAL SHEETS OF POLYETHYLENE SLEEVING BETWEEN THE FITTINGS AND THE FIRST WEDGE.
- SUPPORT PVC FITTINGS USING SHAPED BLOCKS AVAILABLE FROM PRODUCT MANUFACTURER.