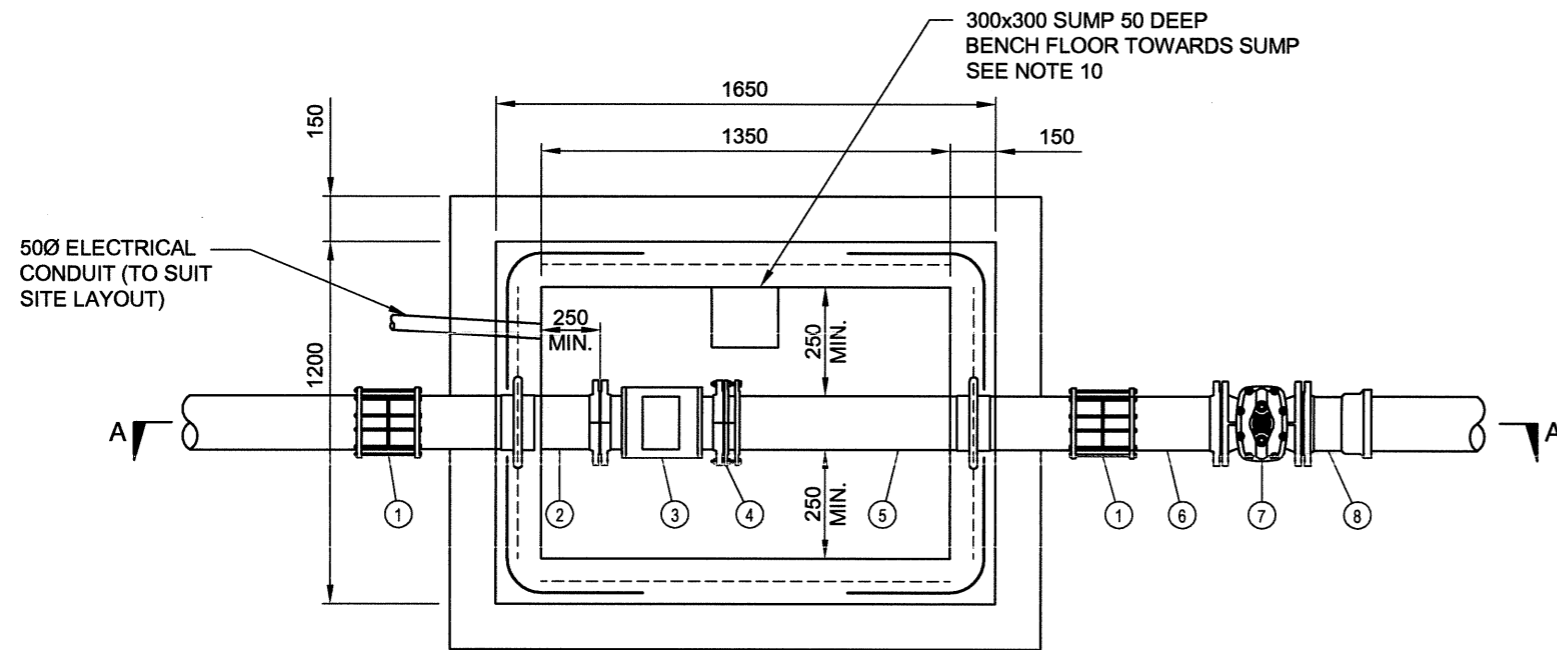


SECTION A-A



PLAN VIEW

NOTES

1. ALL CORED HOLES FOR PIPES TO BE INCLUDED IN CONTRACT FOR CONSTRUCTION OF FLOW METER.
2. OPENINGS IN WALLS FOR D.I. OUTLET PIPES TO BE SEALED WITH MORTAR OR APPROVED ALTERNATIVE BY PUMP STATION CONTRACTOR.
3. DUCTILE IRON PIPEWORK IS TO BE EPOXY COATED INSIDE & OUT AS NOTED.
4. CONCRETE COVER TO REINFORCEMENT TO BE A MINIMUM OF 50mm U.N.O.
5. CONCRETE TO BE CLASS N40 , WITH 20mm AGGREGATE & SLUMP OF 80mm.
6. ALL BOLTS, FITTED WITH WASHERS, AND FIXINGS TO BE 316 GRADE STAINLESS STEEL
7. ALL SLUICE VALVES TO BE FLANGED, RESILIENT SEATED AND EPOXY COATED.
8. DISMANTLING JOINTS TO BE EPOXY COATED & HAVE 16mm STAINLESS STEEL BOLTS & NUTS.
9. LID TO BE MINIMUM CLASS A ALUMINIUM LID. LID SHALL BE A TRAFFICABLE CLASS D LID WHEN LOCATED IN TRAFFICABLE AREAS.
10. SUMP TO BE LOCATED ON OPPOSITE SIDE OF PIT TO LID HINGES.
11. FLOW METER TO BE APPROVED BY MACKAY REGIONAL COUNCIL. INSTALLATION OF FLOW METER TO MANUFACTURES SPECIFICATIONS AND PROCEDURES.
12. NO FITTINGS TO BE LOCATED WITH 5x PIPE DIAMETER UPSTREAM OF FLOW METER AND 3x PIPE DIAMETER DOWNSTREAM OF FLOW METER. CONTRACTOR TO CONFIRM WITH FLOW METERS MANUFACTURER'S SPECIFICATIONS.
13. INSTALL EARTH REQUIREMENTS AS PER MANUFACTURERS SPECIFICATION.
14. REINFORCEMENT & WALL THICKNESS SHOWN ON PLAN IS INDICATIVE ONLY. FLOW METER TO BE STRUCTURALLY DESIGNED AND CERTIFIED BY A RPEQ STRUCTURAL ENGINEER TO CURRENT AUSTRALIAN STANDARDS AND CODES.

MATERIALS LIST

ITEM	DIAMETER	DESCRIPTION	NO. OFF
1		GIBALT	2
2		DICL PIPE LENGTH TO SUIT FL-SP WITH PUDDLE FLANGE	1
3		FLOW METER FL-FL (SEE NOTE 11)	1
4	DIAMETER TO MATCH RISING MAIN	NON-THRUST TYPE DISMANTLING JOINT	1
5		DICL PIPE LENGTH TO SUIT SP-SP WITH PUDDLE FLANGE	1
6		DICL PIPE FL-SP (350mm MIN.)	1
7		SLUICE VALVE FL-FL	1
8		CONNECTOR FL-SO	1

No.	DATE	DESCRIPTION	APVD
A	DEC/14	ORIGINAL ISSUE	DB
AMENDMENTS AND REVISIONS			

DISCLAIMER. The Mackay Regional Council shall have no liability or responsibility to the user or any other person or entity with respect to any liability, loss or damage caused or alleged to be caused, directly or indirectly, by the adoption and use of this Standard Drawing. Persons must not rely on this Standard Drawing as the equivalent of, or a substitute for, project-specific design and assessment by an appropriately qualified professional.

CHIEF OPERATING OFFICER
WATER & WASTE SERVICES
David Brooker
DAVID BROOKER
DATE 19/12/14



SEWAGE PUMPING STATION

**FLOW METER
ARRANGEMENT**

STANDARD
DRAWING

A3-04320 A