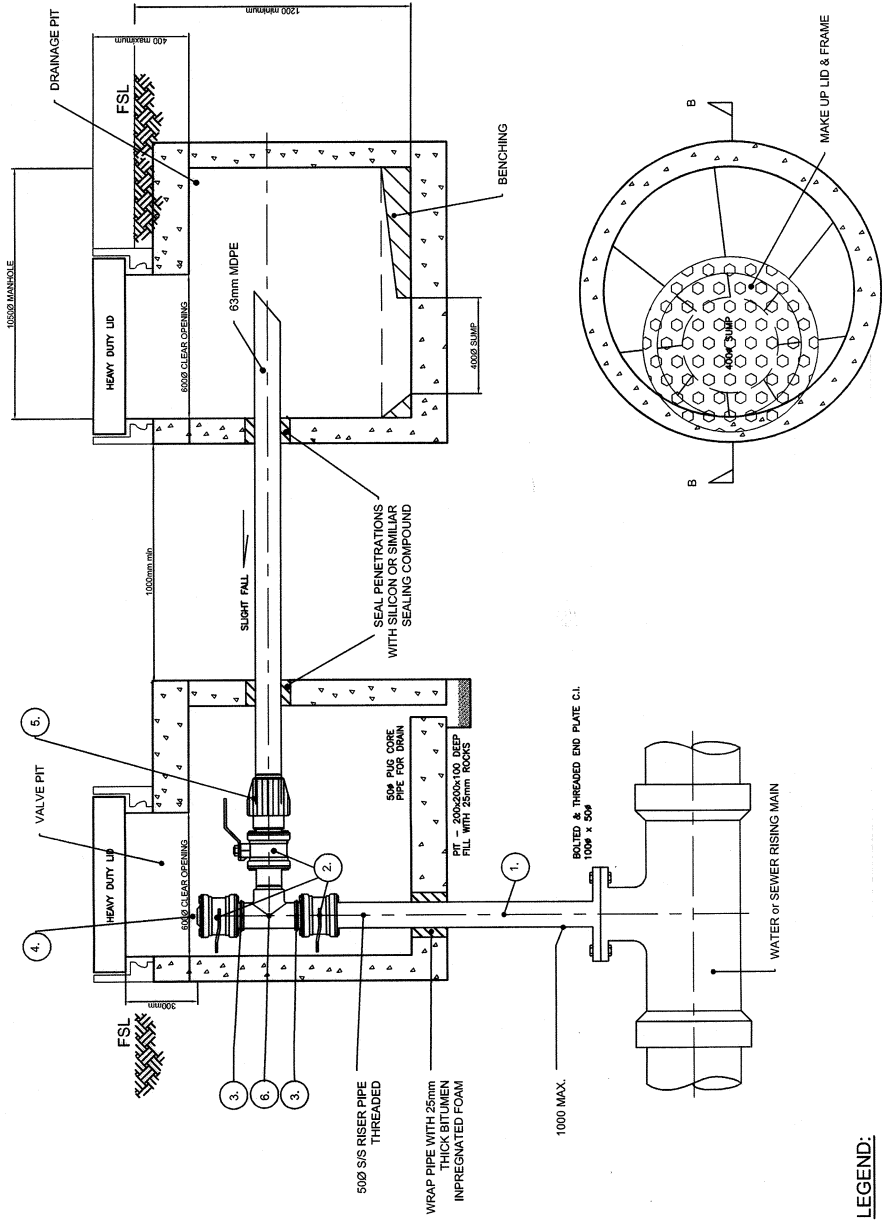


**NOTES:**

- MH CONCRETE COVERS CANNOT BE USED WITHOUT WRITTEN APPROVAL FROM COUNCIL.
- ALL DIMENSIONS IN MILLIMETRES.
- CONSTRUCTION MAY BE A COMBINATION OF PRECAST AND IN-SITU TO SUIT APPLICATION (WATER AGENCY AUTHORISATION REQUIRED).
- MAKE-UP RINGS:
  - USE MINIMUM OF ONE MAKE-UP RING TO HAVE MAXIMUM HEIGHT OF 0.400m FROM BOTTOM OF CONVERSION SLAB TO TOP OF LID.
- BACKFILL AROUND MH.
  - THE METHOD OF BACKFILL AND COMPACTION AROUND MH TO BE GENERALLY AS FOR PIPE EMBEDMENT.
  - TAKE CARE TO RAISE SELECT FILL EQUALLY ALL AROUND THE MH TO AVOID UNBALANCED LATERAL LOADING.
- SEALING METHODS
  - MAKE JOINTS BETWEEN SECTIONS, USING
    - BUTYL-MASTIC, OR
    - MORTAR MADE FROM 3 PARTS SAND TO 1 PART CEMENT.
  - APPLY BUTYL-MASTIC IN ACCORDANCE WITH MANUFACTURERS SPECIFICATION.
  - THICKNESS OF CEMENT MORTAR AT ANY JOINT TO BE NO GREATER THAN 50.
  - SCABBLE AND CLEAN JOINT SURFACES SO THAT ALL LOOSE OR SOFT MATERIAL IS REMOVED.
  - JOINT SURFACES TO BE BRUSHED CLEAN, SPONGED WET AND PRIMED WITH A CEMENT/WATER SLURRY PRIOR TO PLACING THE CEMENT MORTAR.
- GAS TIGHT HEAVY DUTY TYPE COVERS TO BE USED

**NON TRAFFICABLE COVERS**

FINISHED LEVELS OF MH COVERS	
LOCATION	H
UNDEVELOPED AREAS	100
NEW SUBDIVISIONS	75
ROADS, LANE WAYS, FOOTWAYS & DRIVEWAYS	FLUSH
EXISTING BUILT UP AREAS	25
OTHER AS SPECIFIED (EG ABOVE FLOOD LEVEL)	



**LEGEND:**

- 500 THREADED STAINLESS STEEL PIPE TO SUIT.
- 500 F & F STAINLESS STEEL BALL VALVE.
- 500 STAINLESS STEEL HEX NIPPLE.
- 500 STAINLESS STEEL PLUG.
- 500 M.I. TO 630 POLYTHENE COUPLING.
- 500 STAINLESS STEEL TEE.

<b>Mackay REGIONAL COUNCIL</b>		<b>STANDARD DRAWING</b> AIR VALVE PIT Ø50 AND Ø80 AIR VALVES		DRAWING No. <b>A3-00832</b>
<b>COMMERCIAL SERVICES</b>		EXECUTIVE MANAGER MACKAY WATER & WASTE RPEQ 7506		AMEND. <b>C</b>
DRAWING FILE NAME M:\Engineering Services\Technical Services\Design\Projects\Standard drawing\Mackay Water\WASA MRC\SPS CODE\VA-00832		WSAA NO. <b>SPS-1500</b>		SHEET <b>1</b> OF <b>1</b>
SURVEY FILE No N/A		DATE OF LAST EDIT June 23, 2009		DATE 27 MAY 09
LEVEL DATUM A.H.D.		JOB No		
NO.	DATE	APPVD.	DESCRIPTION	
C JUN09		JGG	AMEND MGR. SIGNATURE	
B MAY08		SLR	MODIFIED TO MRC TBLOCK	
A OCT07		SLR	T'SFER TO MRC TBLOCK	
0			WSAA ORIG.	