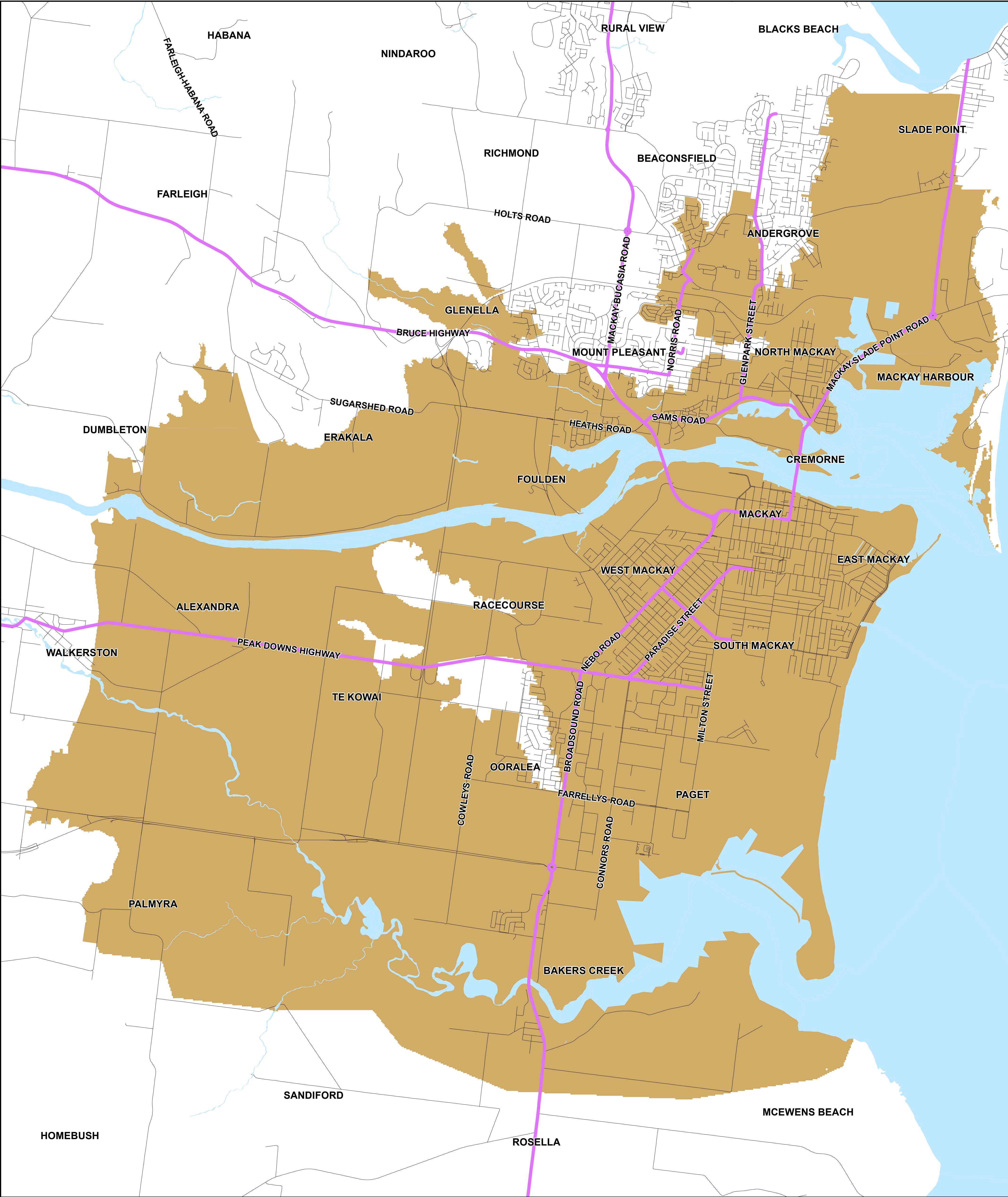


# PIONEER RIVER FLOOD INUNDATION

## EVACUATION ZONE MAP



PRODUCED BY MACKAY REGIONAL COUNCIL - GIS SECTION

Based on Cadastral Data provided with the permission of the Department of Natural Resources, Mines and Energy (DNRME).  
CURRENT AS AT MARCH 2021  
While every care is taken to ensure the accuracy of this data, the Department of Natural Resources and Mines and Mackay Regional Council give no warranty in relation to the data (including accuracy, reliability, completeness or suitability) and accepts no liability (including without limitation, liability in negligence) for all expenses, losses, damages (including indirect or consequential damage) and costs which you might incur as a result of the data being inaccurate or incomplete in any way and for any reason.

- Evacuation Routes
- Extreme 10.5 Metre Extent
- Above Evacuation Zone

