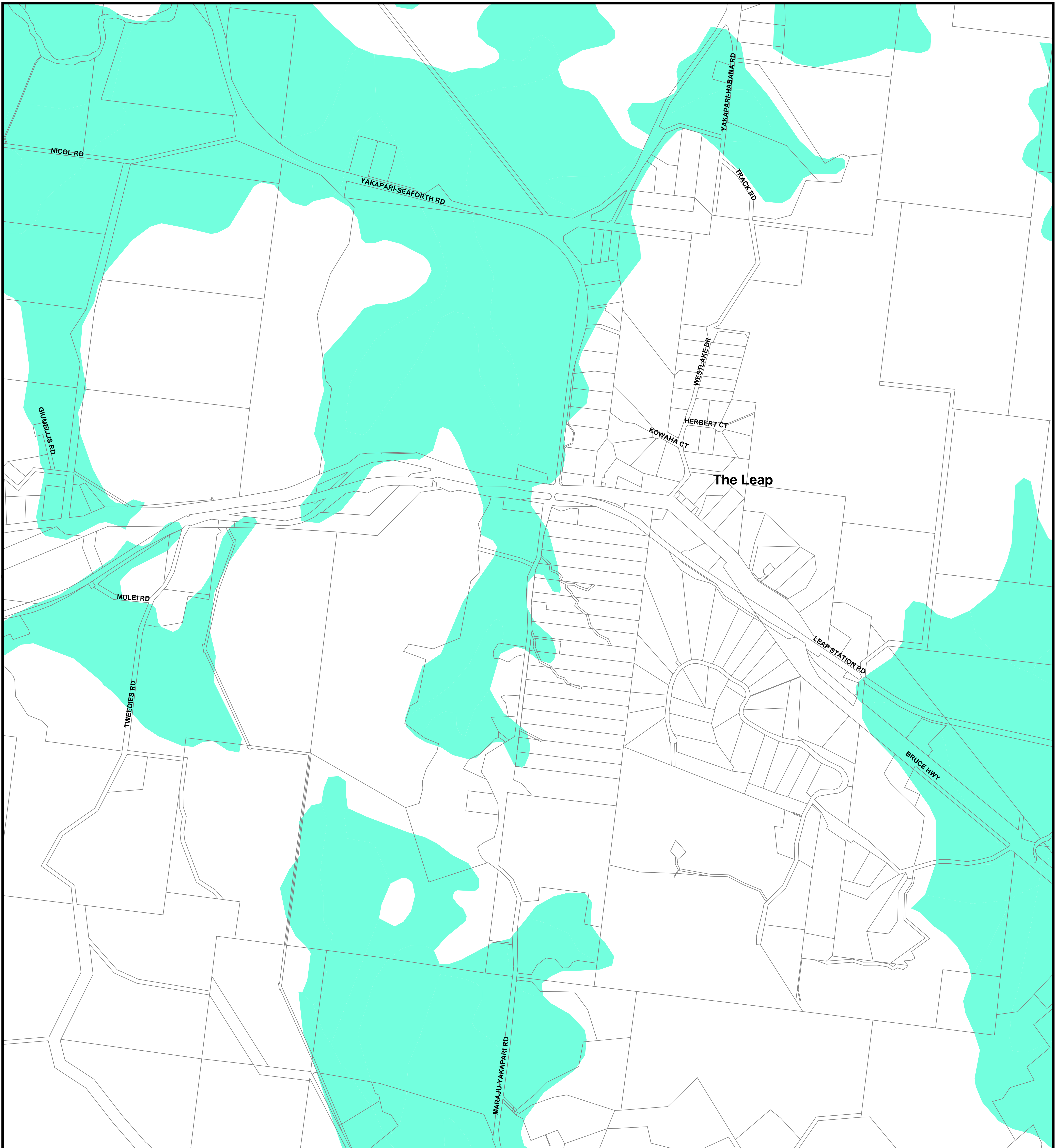


Mackay City Council Planning Scheme

GOOD QUALITY AGRICULTURAL LAND OVERLAY



PRODUCED BY MACKAY CITY COUNCIL - GIS SECTION

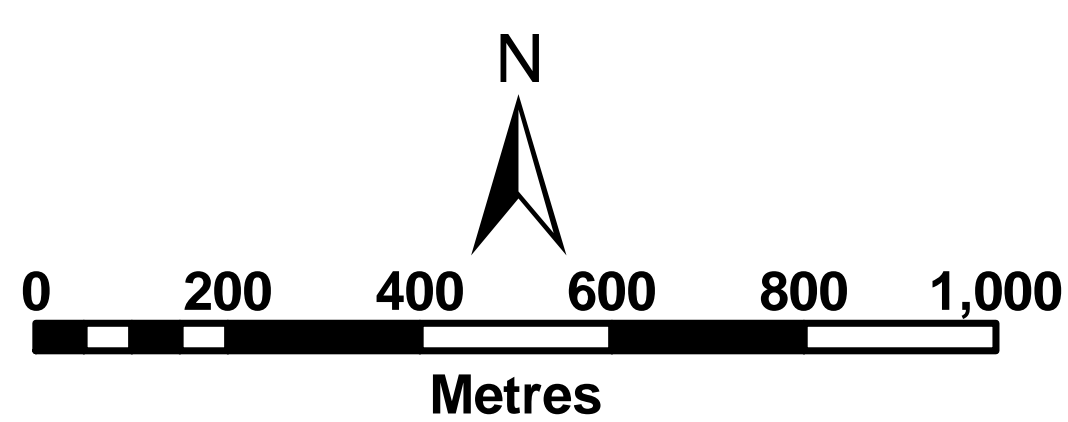
Based on Cadastral Data provided with the permission of the Department of Natural Resources, Mines & Energy.
(Current as at Nov 2005)

While every care is taken to ensure the accuracy of this data, the Department of Natural Resources, Mines & Energy and Mackay City Council give no warranty in relation to the data (including accuracy, reliability, completeness or suitability) and accepts no liability (including without limitation, liability in negligence) for all expenses, losses, damages (including indirect or consequential damage) and costs which you might incur as a result of the data being inaccurate or incomplete in any way and for any reason.

Extent of Overlay

Good Quality Agricultural Land

--- Locality Boundaries



Series 14 - The Leap

The Planning Scheme took effect on 24 March 2006