



LIST OF FURNITURE AND MATERIALS

List of Furniture and Materials

Table of contents

	Amendment history	3
1	Introduction	3
1.1	Application.....	3
1.2	Relationship with planning scheme.....	3
1.3	Purpose	3
1.4	Variations	4
1.5	Who should use this list?	4
1.6	Referenced documents	4
2	Standard furniture and fixtures	5
2.01	Seating and picnic settings	6
2.02	Bin enclosures.....	7
2.03	Bin locking posts	8
2.04	Bollards	9
2.05	Taps, bubblers, drinking fountains and beach showers.....	10
2.06	Water bottle refill stations.....	11
2.07	Bicycle stand (rack).....	12
2.08	Barbeques (BBQ).....	13
2.09	Electrical switchboards (external use in parks).....	14
2.10	Electrical pits (external use in parks)	15
2.11	Standard lighting pole in recreational parks	16
2.12	Park shelter lighting.....	17
2.13	Dog bag dispenser	18
2.14	Delineation marker (footpath trading).....	19
2.15	Bus shelters.....	20
2.16	Fish cleaning station	21
2.17	Handrails and barriers	22
2.18	Public amenities locking system	23
3	Mackay City Centre Local Plan Area - furniture and fixtures.....	24
3.01	Seating – Mackay City Centre.....	25
3.02	Bin enclosures – Mackay City Centre	26
3.03	Tree surround – Mackay City Centre	27
4	Standard signs	28
4.01	Park and reserve name sign	29
4.02	Playground regulatory sign	30
4.03	S.A.F.E.R playground sign.....	31

4.04	Regulatory sign for skate parks.....	32
4.05	Regulatory sign for fitness equipment.....	33
4.06	Regulatory sign for water play.....	34
4.07	Suite of dog park signs.....	35
4.08	Beach safety sign.....	36
4.09	Suite of beach access signs.....	37
4.10	Beach access first aid sign.....	38
4.11	Coastal or conservation reserve wayfinding/directional sign	39
4.12	Coastal or conservation reserve interpretive sign.....	40
4.13	Regulatory tree and/or vegetation vandalism sign.....	41
4.14	Street name sign	42
4.15	Bus stop – J pole sign (Translink).....	43
5	Standard fencing and gates.....	44
5.01	Recreational parks – all types	45
5.02	Coastal and conservation reserves.....	46
5.03	Council controlled land (excluding recreational parks, coastal and conservation reserves) 47	
5.04	Gates and entry devices	48
6	Standard hard-scape materials and surface finishes	49
6.01	Paths, hardstands, shelter and furniture slabs	50
6.02	Footpath treatment in Mackay City Centre Local Plan Area	51
6.03	Edging treatments.....	51
6.04	Retaining walls.....	52
6.05	Decks and boardwalks (including beach access stairs).....	53
6.06	Beach access.....	54
6.07	Road medians, islands and threshold treatments in MRC controlled roads	55
7	Indicative images of materials and surface finishes	56

Amendment history

This guidance document/list commenced on 9 November 2020. Amendments since this date are listed in the below table.

Version number	Amendment title	Summary of amendment	Effective date
1.4	Miscellaneous 1	Miscellaneous minor amendments predominantly related to signage and electrical items	Effective – 13 July 2023
1.3	Correction 3	Corrects label of park seat as PS7 rather than PB7	Effective – 12 January 2022
1.2	Correction 2	Clarifies the lock type required for bin locking posts	Effective – 5 October 2021
1.1	Correction 1	Amends the bin enclosure section to reflect 240L bin size instead of 120L	Effective – 12 March 2021
1.0	Commencement	This guidance document was created.	Effective – 9 November 2020

1 Introduction

1.1 Application

This list has been created by Mackay Regional Council (Council). It supports the development assessment process under the Mackay Region Planning Scheme 2017 (planning scheme) and *Planning Act 2016* by listing standard items that support requirements within the planning scheme or a Planning Scheme Policy.

The pallet of furniture and materials prescribed in this list is to be used in public open spaces under the control of Council. This includes a specific pallet of customised furniture and materials used in the Mackay City Centre Local Plan Area.

Note that the Mackay Waterfront Priority Development Area is not subject to the requirements of this document, however the Mackay Waterfront Priority Development Area Development Scheme may refer to this document for guidance.

1.2 Relationship with planning scheme

This document is referenced in the following locations:

- (a) Planning Scheme Policy – Open Space
- (b) Planning Scheme Policy – Landscape

1.3 Purpose

The purpose of this list is to specify a palette of furniture and materials approved by Council for use in the region's public open spaces, which include recreational parks and streetscape settings.

The aim of using of a standard and coordinated selection of furniture and materials is to promote a recognisable and cohesive character for the region's public open spaces. The prescribed palette also enables Council to maintain central stores of replacement furniture, spare parts and materials to expedite repairs and renewal works in the region's recreational parks, streetscapes and other public reserves.

1.4 Variations

Variations in furniture or material sections can be requested when justified against the planning scheme and/or planning scheme policy, and it can be demonstrated to the satisfaction of Council that the following conditions are achieved:

- (a) The proposed furniture or material selected has an equivalent or superior performance in terms of robustness and longevity to items specified in this list.
- (b) The change in furniture or materials will reinforce a unique sense of place or function of the recreational park, streetscape setting or other type of public reserve.
- (c) Is compliant with all relevant Australian standards and other applicable specifications, including but not limited to:
 - Supplementary specification 8301 – Landscape furniture.
 - Ergon standards relating to electrical installations.

1.5 Who should use this list?

The List of Furniture and Materials should be used by all stakeholders involved with planning, design, construction and maintenance of public open space in the Mackay region as well as those involved in preparing, and in the assessment of Development and Operational Works Applications involving public open space assets that will be transferred to Council.

1.6 Referenced documents

Council's List of Standard Drawings

Council documents

- (i) *Council's Visual Identity Manual*
- (ii) *Council's Footpath Trading and Structure Policy Guideline.*

External Documents

- (i) *Public Transport Infrastructure Manual*
- (ii) *National Aquatic and Recreational Signage Style Manual*

2 Standard furniture and fixtures

COMPONENTS:	VERSION ISSUE DATE
2.01 SEATING AND PICNIC SETTINGS	ISSUE 1: 9 Nov 2020
2.02 BIN ENCLOSURES	ISSUE 1: 9 Nov 2020
2.03 BIN LOCKING POST	ISSUE 1: 9 Nov 2020
2.04 BOLLARDS	ISSUE 1: 9 Nov 2020
2.05 TAPS, BUBBLERS, DRINKING FOUNTAINS AND BEACH SHOWERS	ISSUE 1: 9 Nov 2020
2.06 WATER BOTTLE REFILL STATION	ISSUE 1: 9 Nov 2020
2.07 BICYCLE STAND (RACK)	ISSUE 2: 13 July 2023
2.08 BARBEQUES (BBQ)	ISSUE 2: 13 July 2023
2.09 ELECTRICAL SWITCHBOARDS (EXTERNAL USE IN PARKS)	ISSUE 2: 13 July 2023
2.10 ELECTRICAL PITS (EXTERNAL USE IN PARKS)	ISSUE 2: 13 July 2023
2.11 PARK STANDARD LIGHTING POLE	ISSUE 2: 13 July 2023
2.12 PARK SHELTER LIGHTING	ISSUE 2: 13 July 2023
2.13 DOG BAG DISPENSER	ISSUE 1: 9 Nov 2020
2.14 DELINEATION MARKERS	ISSUE 1: 9 Nov 2020
2.15 BUS SHELTERS	ISSUE 1: 9 Nov 2020
2.16 FISH CLEANING STATION	ISSUE 1: 9 Nov 2020
2.17 HANDRAILS AND BARRIERS	ISSUE 1: 9 Nov 2020
2.18 PUBLIC AMENITIES LOCKING SYSTEM	ISSUE 1: 13 Jul 2023

2.01 Seating and picnic settings

Recommended Supplier:

Street Furniture Australia, or equivalent.

Furniture Style / Product Code:

Selected items from of the Park Range.

PB5 – Park Bench.

PS7 – Park Seat with armrests both ends.

PT7 – Park Table with wheelchair access one end. Table to be paired with 2 x PB5 – Park Benches for picnic settings.

Materials & Finishes:

Frame - Cast Aluminium, Powder Coated. Colour 'Night Sky'.

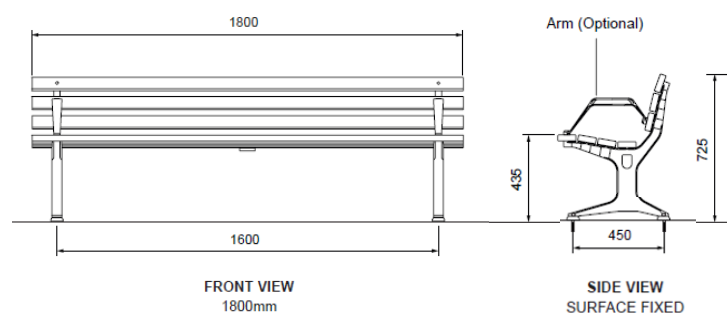
Armrests - Cast Aluminium, Powder Coated. Colour 'Night Sky'.

Battens - Aluminium Anodised.

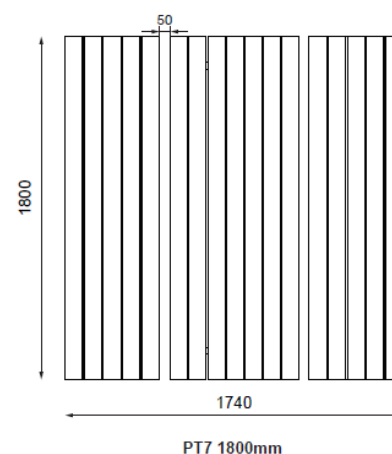
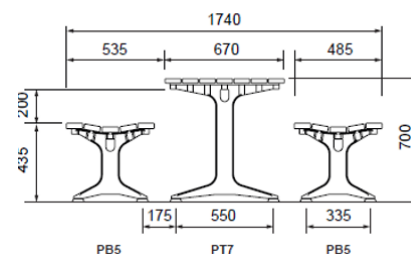
Mounting - Surface fixed with 12mm True bolts.

General Notes / Requirements:

- *The standard seating and picnic setting within the 'Park Range' is available in various lengths (815, 1500, 1800, 2500mm as well as tailored options). Council's preference is for the 1800mm length to be installed unless there is a specific design-related reason demanding that another sized unit be used.*
- *All items of furniture are to be surface mounted on a concrete slab sized and constructed in accordance with Standard Drawing A3-09695: Furniture Concrete Slab Sizing unless otherwise specified.*



PS7 – PARK SEAT WITH ARMRESTS



**PICNIC SETTING ARRANGEMENT
PT7 – PARK TABLE WITH 2 X PB5 – PARK BENCH**

2.02 Bin enclosures

Recommended Suppliers:

Street Furniture Australia, or equivalent.

Furniture Style / Product Code:

*WBE-nF240-PAN – Frame Bin Enclosure 240L with solid panels and curved roof.
Single or Dual Module option available.*

Materials & Finishes:

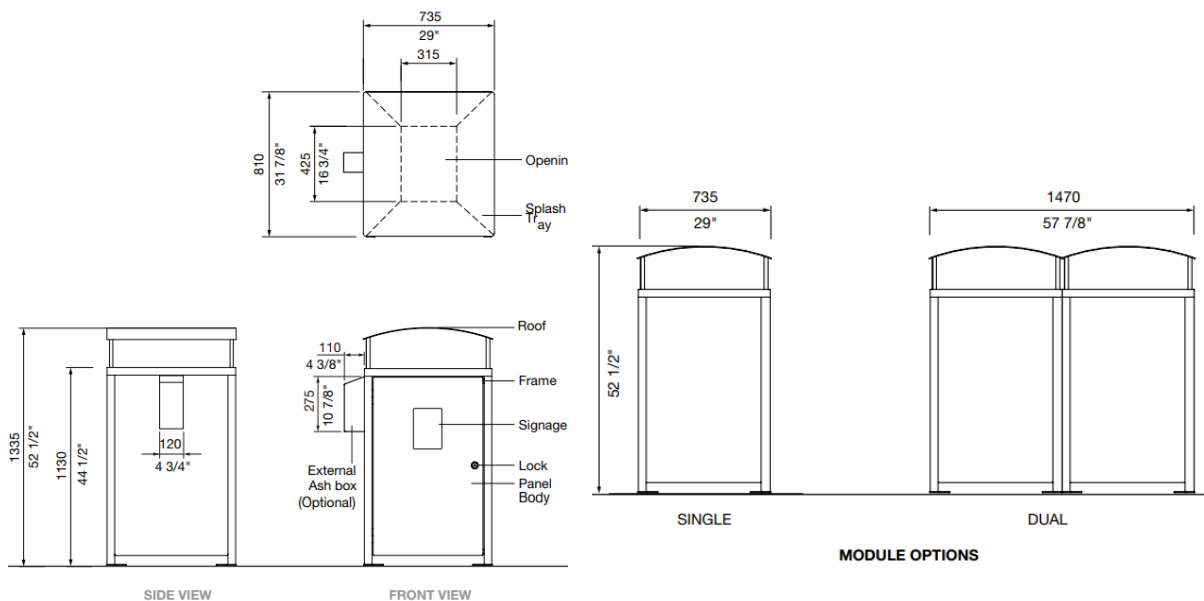
Frame & Panels – Stainless 304 Powder Coated.

Colour 'Mercury Silver Gloss GW003K'.

Mounting – Surface fixed with 12mm True bolts.

General Notes / Requirements:

- *Council's preference is to install bin enclosures in high profile areas such as along shared pathways and where the rubbish receptacle is to be sited close to picnic shelters where people are likely to be eating. The use of a single versus the dual module will be dictated by use and assessed on merit.*
- *Enclosures are to be surface mounted on a concrete slab sized and constructed in accordance with the Standard Drawing A3-09695: Furniture Concrete Slab Sizing.*



2.03 Bin locking posts

Recommended Supplier:

Draffin Street Furniture or equivalent.

Furniture Style / Product Code:

383/B/SS – 240L MGB Single Wheelie Bin Post, Bold Down.

383/I/SS – 240L MGB Single Wheelie Bin Post, In-ground Option.

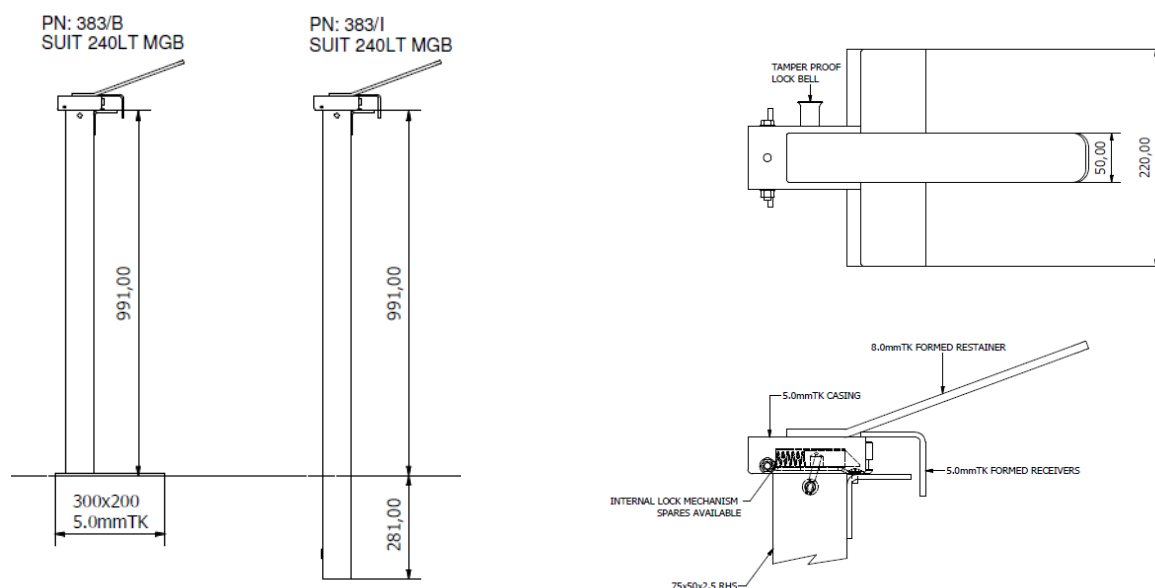
Materials & Finishes:

Post - All Steel Hot Dip Galvanised. Plan Galvanised Finish.

Lock – 316 Stainless Steel Components.

General Notes / Requirements:

- *Council's preference is to install bin locks in parks unless the location is deemed to be a high-profile area or where the rubbish receptacle is to be sited close to picnic shelters where people are likely to be eating. The need to install a single bin verses multiple bins in any given area will be dictated by use and assessed on merit.*
- *Installation of the Bin Locking Post is to be in accordance with the Standard Drawing A3-09695: Furniture Concrete Slab Sizing.*
- *Locking mechanism must fit 8mm Triangular Lock with Key*



BIN LOCKING POSTS – FIXING OPTIONS



8mm TRIANGULAR KEY FOR LOCKING MECHANISM

2.04 Bollards

Recommended Supplier:

Replas Recycled Plastic Products, or equivalent.

Furniture Style / Product Code:

Brolga Bollard – Rectangular Profile

Materials & Finishes:

Material - Recycled-plastic. Colour 'Black'

Mounting – Sub-surface fixing.

General Notes / Requirements:

- *The rectangular profile is to be used in recreational parks unless there is a requirement to match existing features or compliment the established character of the built environment.*
- *Bollards are to be installed in accordance with the Council's Standard Drawing A3-00915 or where a removable bollard is specified, Standard Drawing A3-00918.*



BROLGA BOLLARD

2.05 Taps, bubblers, drinking fountains and beach showers

Recommended Supplier:

Urban Fountains + Furniture, or equivalent.

Furniture Style / Product Code:

*PF400 – Bubbler with or without dog drinking bowl and maintenance tap.
Anti-vandal tap shrouds optional.*

Apollo 800 – Drinking Fountain, button activated option with or without a maintenance taps and dog drinking bowl.

*BF200 – Water Bottle Refill Fountain (simple) with options including dog drinking bowl and maintenance tap. Logo and art work can be included.
Note: Matching Wall-Mounted Water Bottle Refill Fountain also available - Product Code BF200W.*

SS150 – Shower with options including foot shower, maintenance tap and dog bowl.

Materials & Finishes:

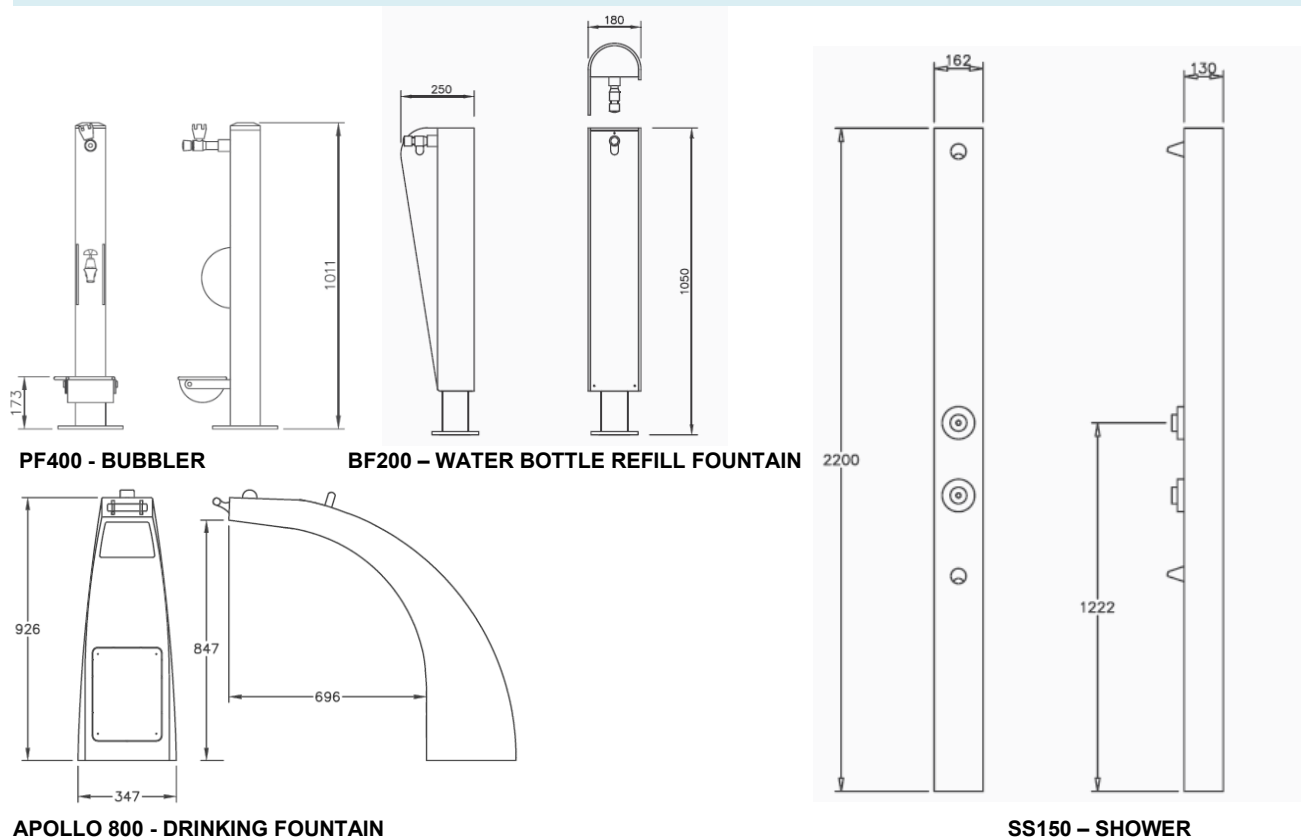
Post and base plates - Stainless Steel, satin finish.

Bubblers & Fountains – Stainless Steel, powder coated. Colour 'Duratec Zeus Silver Grey'.

Mounting – In ground fixings with foundation cage.

General Notes / Requirements:

- All maintenance taps, bubblers, fountains and showers will require adequate drainage to minimise surface wetting.
- Fixtures listed above are to be installed with surrounds sized and positioned in accordance with the Standard Drawing A3-09695: Furniture Concrete Slab Sizing unless otherwise specified



2.06 Water bottle refill stations

Recommended Supplier:

CIVIQ Pty Ltd, or equivalent.

Furniture Style / Product Code:

AQ-FF1500BF - Aquafil Flexi Fountain 155BF – basic with no additional options.

AQ-FF-DC - Aquafil Flexi Drainage cage suitable for Aquafil Flexi products.

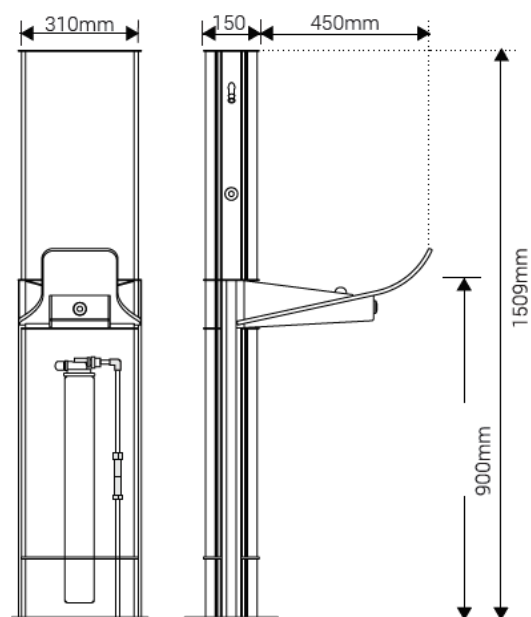
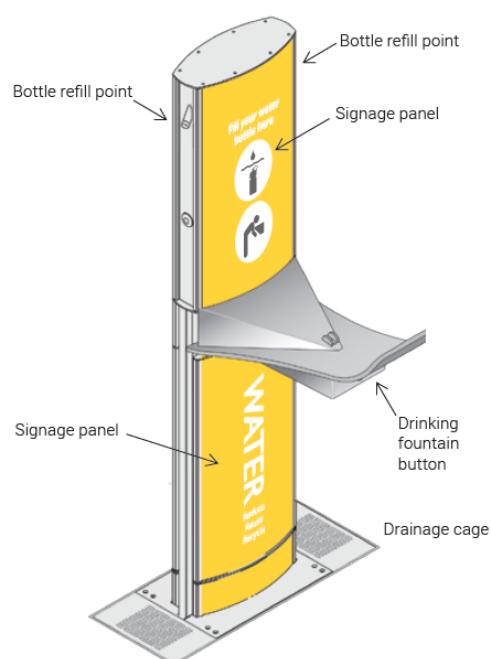
Materials & Finishes:

Housing Frame and Graphic Panels – Stainless steel (Anti-graffiti protection on graphics)

Housing Unit - Anodised steel

General Notes / Requirements:

- *Used in high profile public areas such as along highly trafficked shared pathway routes.*
- *The station will require water connection and adequate drainage. Note that the basic unit is to be order without additional options (No water filter is to be fitted). No additional thermal protection is required.*



1500 AQUAFIL FLEXIFOUNTAIN AND BOTTLE REFILL STATION

FRONT & SIDE ELEVATIONS.

2.07 Bicycle stand (rack)

Recommended Supplier:

Street Furniture Australia, or equivalent.

Furniture Style / Product Code:

BST02 – Slim Hoop.

BST03 – Semi Hoop.

Materials & Finishes:

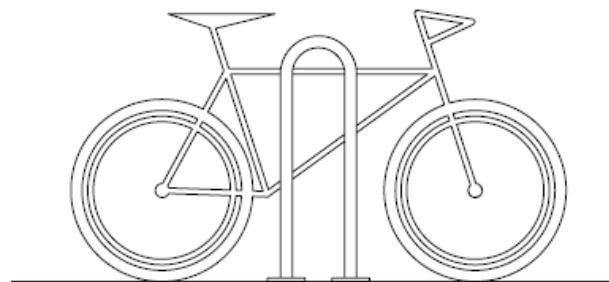
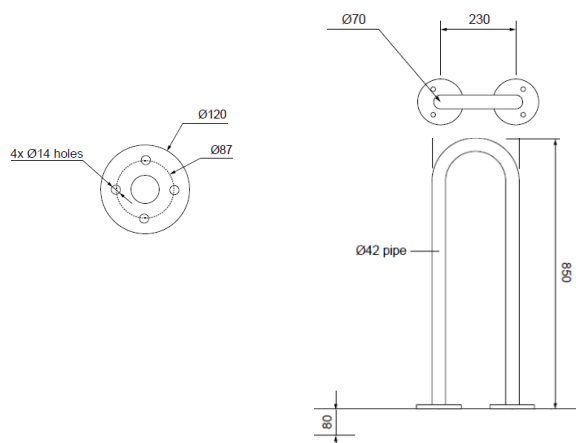
Frame - Stainless Steel 316, brushed..

Colour 'Mercury Silver Gloss'.

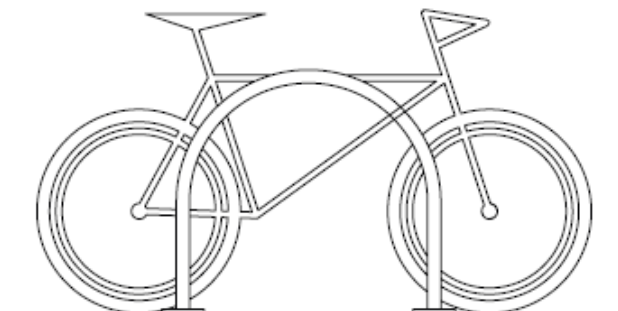
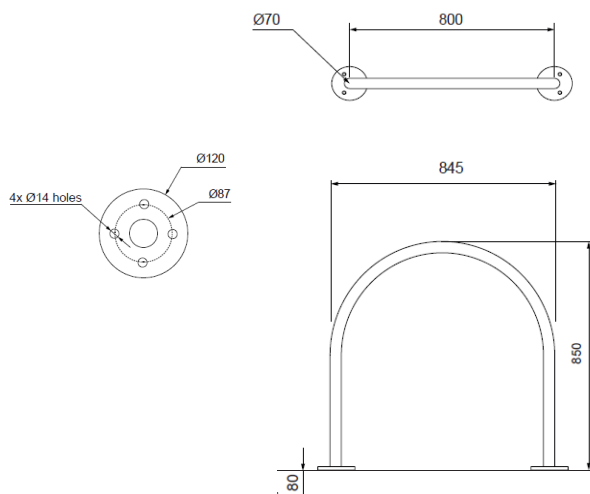
Mounting – surface fixing with 12mm True bolts.

General Notes / Requirements:

- *Minimum spacing between individual stands when forming a multiple rack or storage option is 1.2m. 1.2m is also a minimum physical separation required between a rack and any physical object including buildings, structures, fences and other items of furniture.*



BST02 - SLIM HOOP



BST03 - SEMI HOOP

2.08 Barbeques (BBQ)

Recommended Supplier:

Greenplate, or equivalent.

Furniture Style / Product Code:

Equal Access – DDA Compliant BBQ Range – Single Bench, 230VAC/7.8 amps

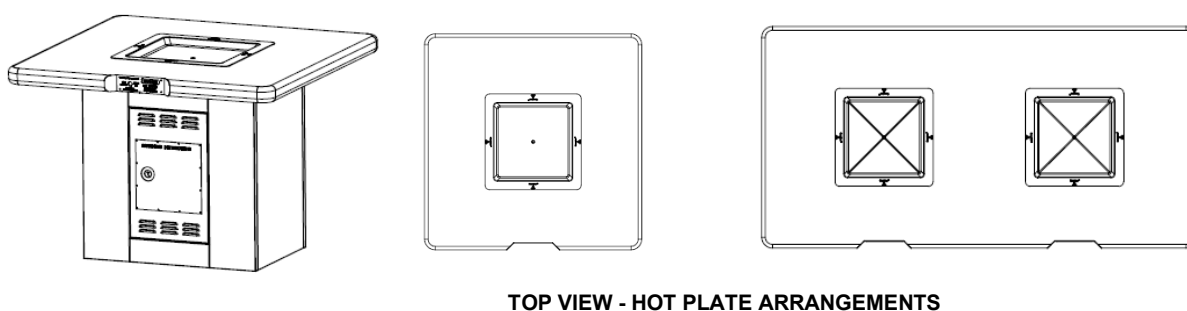
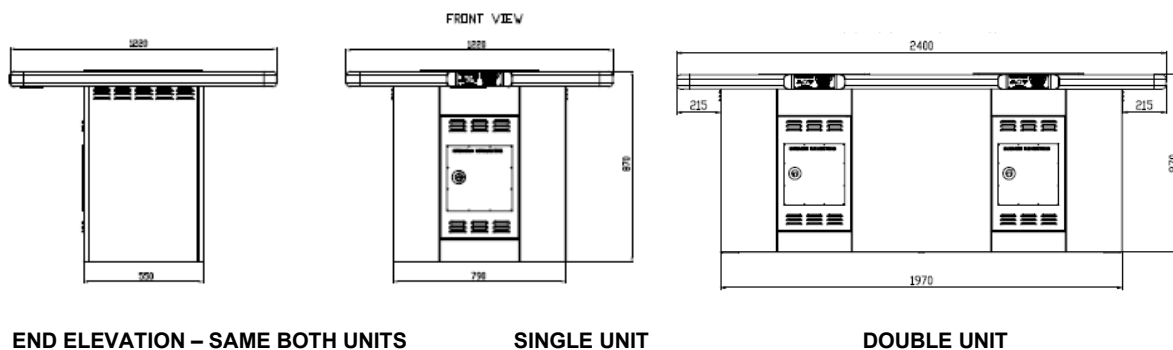
Materials & Finishes:

Bench & Panels – 2mm thick 316 marine grade Stainless Steel

Mounting – surface mounted with 12mm True bolts

General Notes / Requirements:

- New installations will require the BBQ unit to be installed under roofed shelter with fitted lighting and external general power outlet (GPO). GPO is to be accessible for use by the public.
- BBQ shall be supplied with Smart BBQ monitoring system.
- Fixtures are to be located to ensure minimum 1m clearance around the fixture and to other furniture or structures to enable use. Refer Standard Drawing A3-09695: Furniture Concrete Slab Sizing.



2.09 Electrical switchboards (external use in parks)

Recommended Supplier:

B&R Enclosures, or equivalent.

Furniture Style / Product Code:

Monarch Range: IP – 316 SS with 3-point locking, swing pad lockable handle, 19 pole load centre, meter panel and general assembly.

Materials & Finishes:

Cabinet & Frame – 316 Stainless Steel

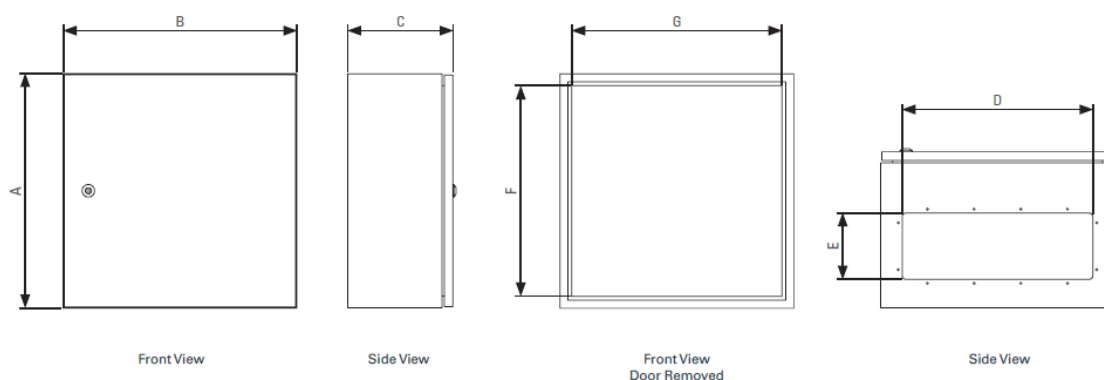
Fixtures – All screws and fixings to be 316 Stainless Steel.

Finish – N4 surface finish.

Mounting – sub-surface fixing of mounting post.

General Notes / Requirements:

- *Cabinet size will be determined by Council's Electricians based on function and capacity requirements.*
- *Cabinets are to be mounted on a stainless-steel frame and installed in accordance with MRC Standard Drawing A3-00906 unless specified otherwise.*



2.10 Electrical pits (external use in parks)

Recommended Supplier:

ACO, or equivalent.

Furniture Style / Product Code:

Polyethylene Pit Range – with ACO Powerlok or approved tamper resistant lid.

Materials & Finishes:

Pits – Polyethylene construction.

Lid – Steel, tamper resistant

Surround - Concrete collar in accordance with TMR SD1440

General Notes / Requirements:

- *Pits to be sized based on function and capacity requirements, allowing minimum 50% increase in conduit capacity.*
- *In state-controlled roads, TMR approved lids are to be used.*

Lids



Riser



Pit



2.11 Standard lighting pole in recreational parks

Recommended Supplier:

GM Poles, or equivalent.

Furniture Style / Product Code:

Stepped Pipe Range – Decorative and based plate mounted pole.

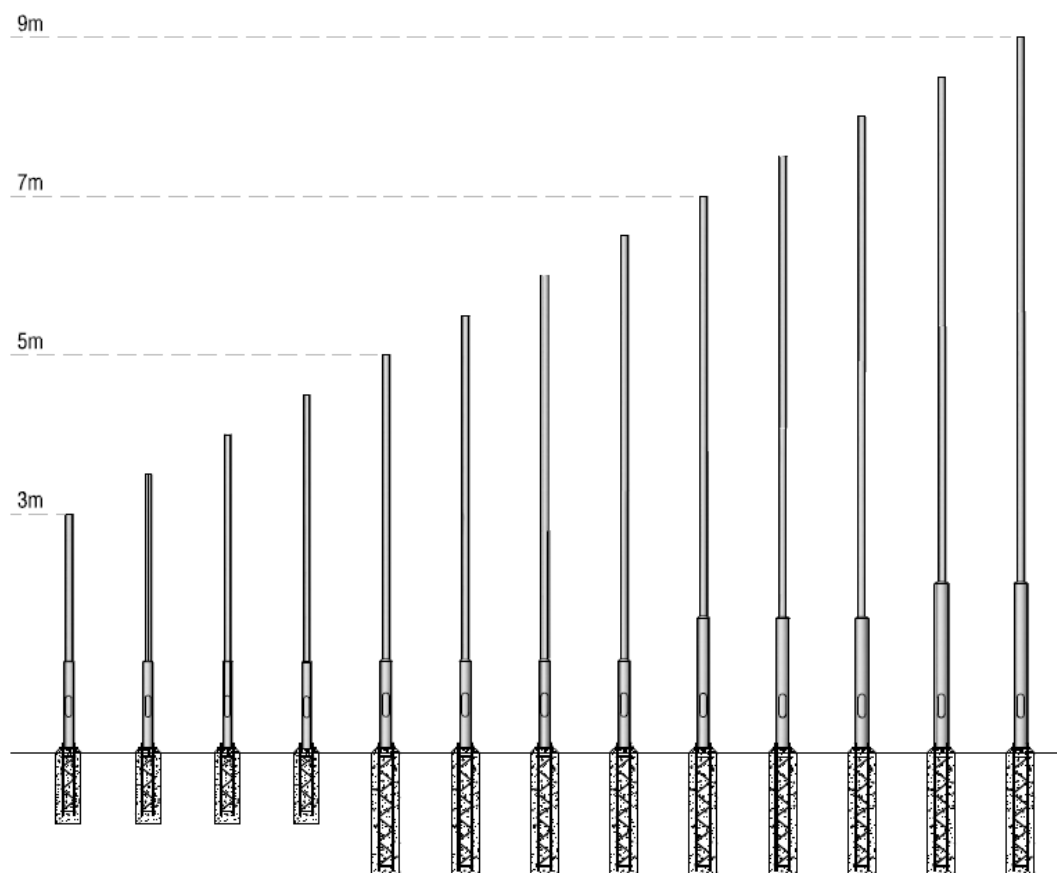
Materials & Finishes:

Pole - Hot dip galvanised steel.

Finish - Powder-coated and coloured to match light fitting. Preferred colour is Silver – RAL 9006.

General Notes / Requirements:

- Pole applicable to park lighting only.
- Height and lighting fixture to be determined as part of the lighting design. Final specification to be approved by MRC Electrical Team.
- Poles to be fixed based unless otherwise specified, and to be fitted with 2-pole circuit breaker mounted inside to allow isolation for maintenance. Each pole is to be supplied from an electrical pit located within 2m.



2.12 Park shelter lighting

Recommended Supplier:

Clipsal, or equivalent.

Furniture Style / Product Code:

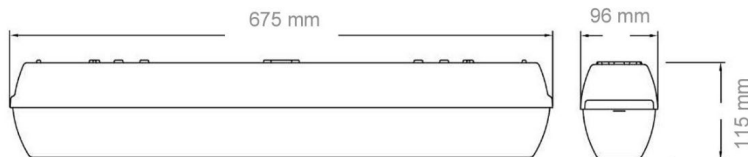
CLITPTUFF1 – LED Weatherproof batten lighting.

Materials & Finishes:

Materials - Polycarbonate impact resistant body and diffuser.

General Notes / Requirements:

- *Picnic shelters are typically only lit when servicing a BBQ facility (located either within or close proximity of the shelter). Lighting of shelters in high use or in locations at risk of vandalism will be considered on merit.*
- *All lights installed in coastal areas shall be set to 3000k colour temperature and not pointing directly towards the ocean.*



PICNIC SHELTER LIGHT

2.13 Dog bag dispenser

Recommended Supplier:

Moodie, or equivalent.

Furniture Style / Product Code:

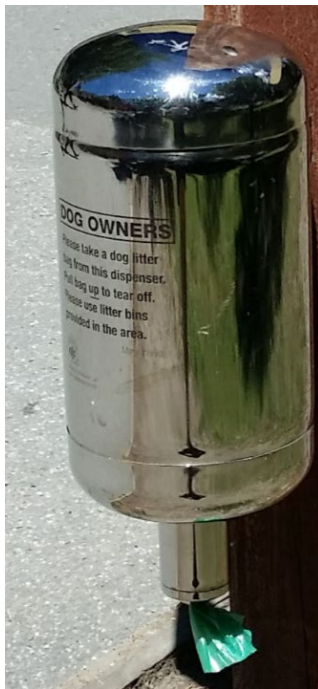
K9 Pod Pack B – Post mounted.

Materials & Finishes:

Posts – All Steel Hot Dip Galvanised. Plain Galvanised Finish or powder coated

Dispenser - Stainless Steel 316 Marine Grade

Mounting - Fix to existing structure or post in accordance with manufacturer's specification.



2.14 Delineation marker (footpath trading)

Recommended Supplier:

Mackay Trophy House, or equivalent.

Product Code:

MRC Footpath Trading Marker – standard template design.

Material & Finishes:

Plate - Brass with engraved imagery – paint infilled.

General Notes / Requirements:

- *All items of this type are to be surface mounted with an appropriate adhesive.*
- *All items of this type are to be located and installed in accordance with the Council's Footpath Trading and Structure Policy Guideline.*



DELINEATION MARKER

2.15 Bus shelters

Recommended Supplier:

Gossi Park Furniture, or equivalent.

Furniture Style / Product Code:

MACBUSSHLTR3615 – Mackay Bus Shelter Urban

MACBUSSHLTRDBLE – Mackay Bus Shelter Rural – Double Sided

Materials & Finishes:

Post and base plates - Stainless Steel, satin finish.

Roof – Stainless Steel, powder coated. Colour COLORBOND® 'Surfmist'

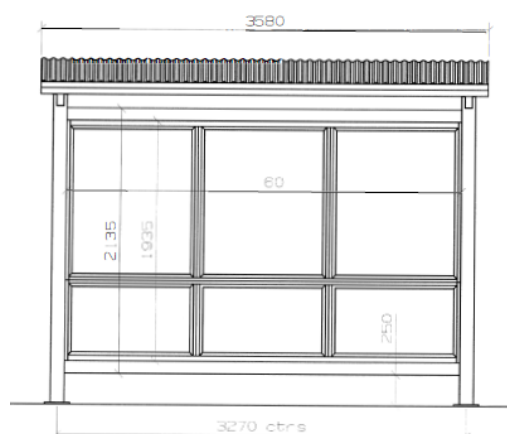
Frame & Side Screens – Colour – 'Blue night' Anodised.

Seat frame – Colour – Dulux 'Deep Ocean'

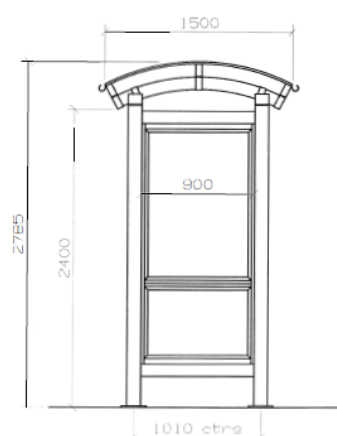
Seat planks – Colour - Clear anodised

General Notes / Requirements:

- *All items of this type are to be supplied and installed in accordance with Council's Standard Drawing A3-00859, A3-00860, A3-00861, A3-00862 and in accordance with PTIM Manual requirements*

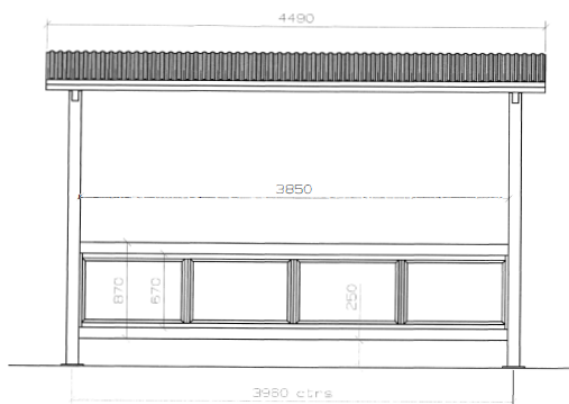


FRONT ELEVATION



SIDE ELEVATION

MACKAY URBAN BUS SHELTER



MACKAY RURAL BUS SHELTER



2.16 Fish cleaning station

Recommended Supplier:

Landmark, or equivalent.

Furniture Style / Product Code:

K192 - Angelsea Fish Cleaning Station with Roof

Materials & Finishes:

Post – Hardwood, Marine upgrade.

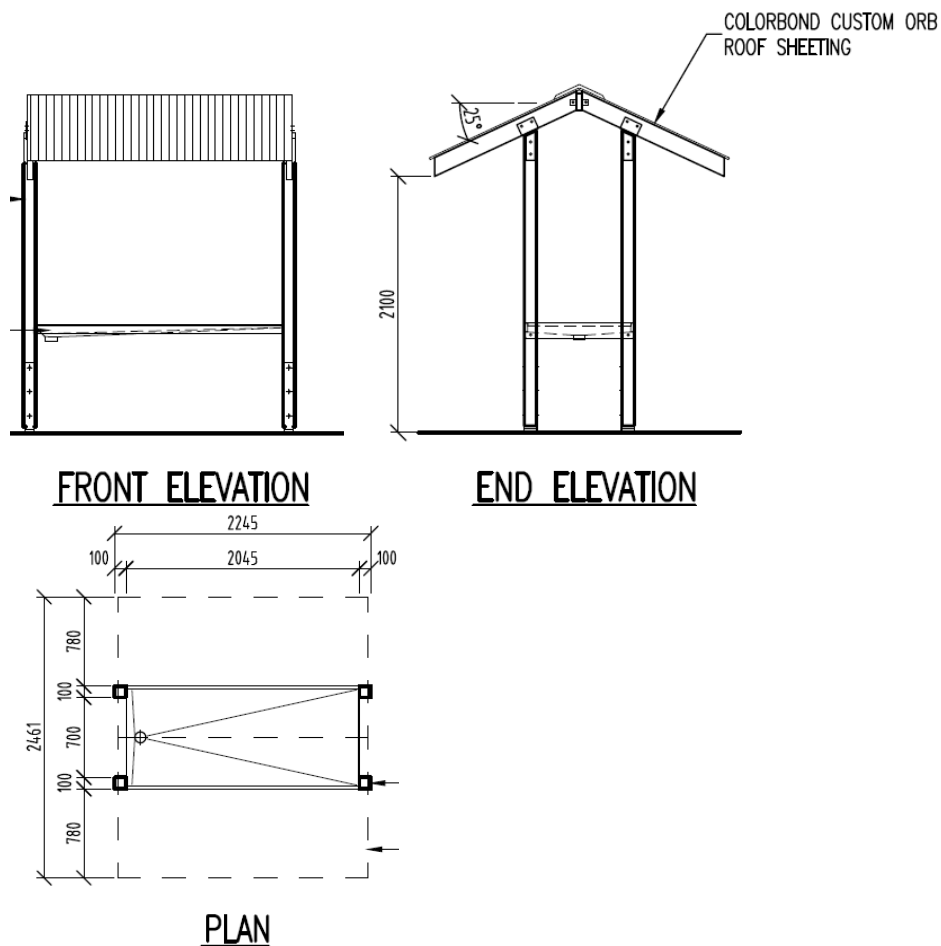
Roof – COLORBOND® Ultra Grade or Suntuff

Tray – Stainless Steel 316 Marine Grade contoured to waste hole.

Fixings & Fixtures – Stainless Steel.

General Notes / MRC Requirements:

- Preference for fish cleaning station is to include plumbing and water tap.
- Fishing Cleaning Station requires adequate drainage to minimise surface wetting.



FISH CLEANING STATION

2.17 Handrails and barriers

Recommended Supplier:

Modex Group, or equivalent.

Furniture Style / Product Code:

No Weld Hand Railing Systems – Built Modular Range:

- ConectaBal.
- Bustrade System.
- AssistRail Disability Handrails.
- TuffRail Handrails & GuardRails.
- BikeSafe Bikeway Barriers.

Materials & Finishes:

Material - Aluminium or Hot Dipped Galvanised Steel

Finishes – Powder-coated option available.

Colour – Standard, Black Gloss or Mercury Silver Gloss

General Notes / Requirements:

- *Use of each type of Hand Railing System will be influenced by the individual site conditions and functional requirements.*

2.18 Public amenities locking system

Recommended Suppliers:

Lockwood Assa Abloy, or equivalent.

Emro, or equivalent (toilet indicator bolt only)

Furniture Style / Product Code

Deadlock - Lockwood Synergy® 3571Y Deadlock Mortice Lock (Single Cylinder)

Push and Pull Plates – Lockwood 2018/2019 Series 10mm Radius Corner

Assisted Toilet Indicator Bolt – Emro C12224

Materials & Finishes:

Deadlock - Case Material – Zinc; Finish – Satin Chrome

Push and Pull Plates Material –Stainless Steel; Finish – Satin Stainless Steel SS

Assisted Toilet Indicator Bolt Material – Zinc Alloy; Finish - Satin Chrome

General Notes / Requirements:

- *For security purposes all public amenity building entry doors are to have specified deadlock installed.*
- *Deadlock is to be single cylinder with cylinder being installed on the outside.*
- *Assisted toilet indicator bolt to be surface mounted to both building entry and cubicle entry.*



DEADLOCK



PUSH AND PULL PLATES



TOILET INDICATOR BOLT

3 Mackay City Centre Local Plan Area - furniture and fixtures

Where a customised item of furniture or fixture type has not been specified for use in the Mackay City Centre Local Plan area, the standard selection prescribed in Section 2 of this document will apply.

COMPONENTS:	VERSION ISSUE DATE
3.01 SEATING	ISSUE 1: 9 Nov 2020
3.02 BIN ENCLOSURES	ISSUE 1: 9 Nov 2020
3.03 TREE GRATE AND GUARD (or permeable paving)	ISSUE 1: 9 Nov 2020

3.01 Seating – Mackay City Centre

Recommended Supplier:

UAP Supply, or equivalent.

Furniture Style / Product Code:

Selected items from of the Edge Range.

EDG01-A1 MS-G-AL –Seat with armrests both ends.

Materials & Finishes:

Frame - Mild Steel, Hot Dip Galvanised. Plan Galvanised Finish.

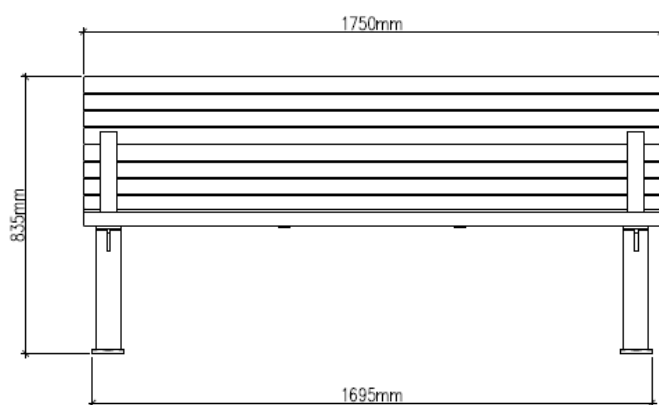
Armrests - Mild Steel, Hot Dip Galvanised. Plan Galvanised Finish.

Slats - Aluminium Anodised.

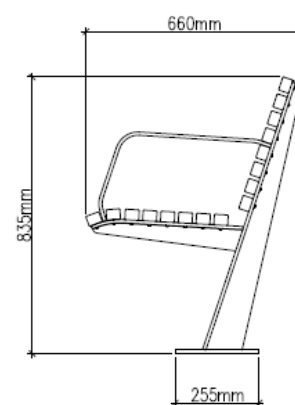
Mounting - Surface fixed with 12mm True bolts.

General Notes / Requirements:

- The standard seating 'Edge Range' is available in two lengths (1750 & 2400mm as well as tailored options). Council's preference is for the 1750mm length to be installed unless there is a specific design-related reason demanding that another sized unit be used.
- All items of furniture are to be surface mounted on a concrete slab sized and sited in accordance with Standard Drawing A3-00989: CBD concrete footpath unless otherwise specified



FRONT VIEW



**SIDE VIEW
SURFACE FIXED**

3.02 Bin enclosures – Mackay City Centre

Recommended Suppliers:

Combined Metal Fabrication, or equivalent.

Furniture Style / Product Code:

Frame Bin Enclosure – 140L Standard enclosure. Single or Dual Module option available.

Door to be hinged to the right. Two options as noted below:

- *General Waste Bin - Cane motif to front with diamond perforated panels to sides and back. Curved roof with open sides.*
- *Recyclable Waste Bin - Diamond perforated panels to all sides. Curved roof with closed sides with round bottle shoot front.*

Materials & Finishes:

Frame & Panels – Galvanised steel 3mm, Powder Coated.

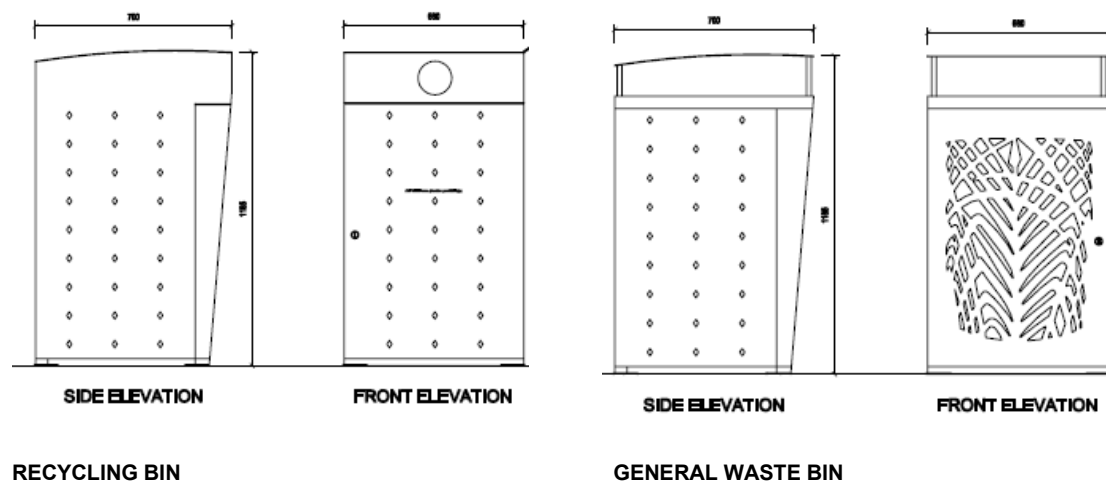
Roof – 316 Stainless.

Colour – Bright Mercury Silver Gloss GW00K to body and modesty panel.

Mounting – Surface fixed with 12mm True bolts

General Notes / Requirements:

- *All items of furniture are to be surface mounted on a concrete slab sized and sited in accordance with Standard Drawing A3-00989: CBD concrete footpath unless otherwise specified.*
- *Cane motif is available on request.*



3.03 Tree surround – Mackay City Centre

Recommended Suppliers:

Citygreen, or equivalent.

Furniture Style / Product Code:

DPFPPR150AA – Praxis™ Heelsafe Treegrate

Materials & Finishes:

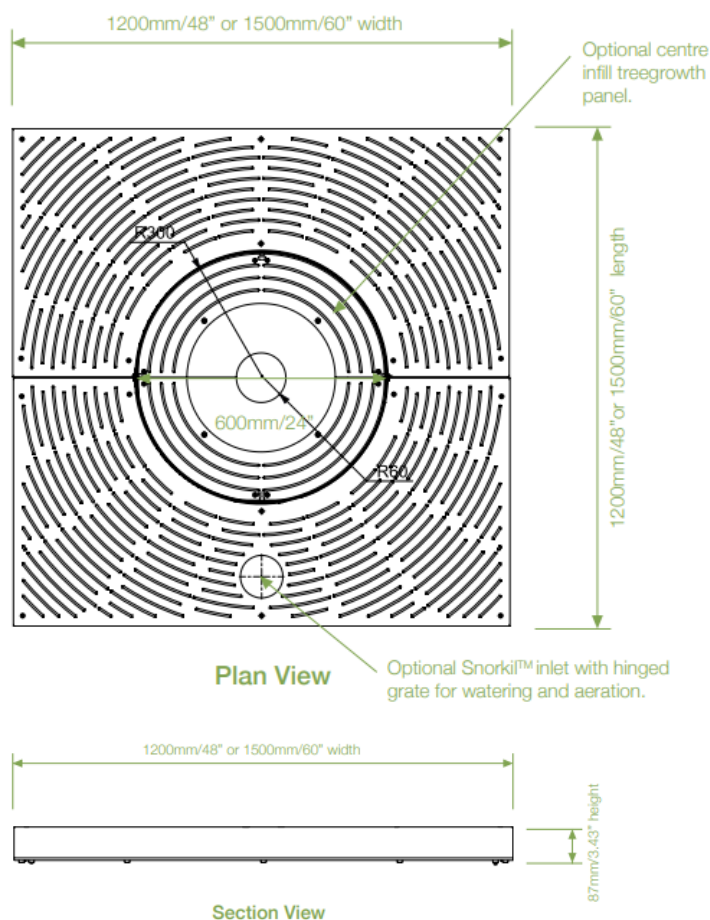
Top Plate – Anodized Aluminium (Marine-Grade) Duraplate.

Colour – Clear Anodized.

Support Plate - Grade 304 Stainless Steel.

General Notes / Requirements:

- Tree grate 'Praxis' within the 'Duraplate™ System Treegrate' range is available in two lengths (1200 x 1200 mm and 1500 x 1500 mm) as well as tailored options. Council's preference is for 1500 x 1500mm to be installed unless there is a specific design-related reason demanding another size to be used.
- Installation of street tree with grates is to be in accordance with Standard Drawing A4-00177: 'Street tree planting to Mackay City Centre Local Plan Area' and Standard Drawing A3-00989: 'CBD concrete footpath'.
- An alternative option to the tree grate is 'pervious pavement' detailed in section 6.02.



4 Standard signs

COMPONENTS:	VERSION ISSUE DATE
4.01 PARK OR RESERVE NAME SIGN	ISSUE 2: 13 July 2023
4.02 PLAYGROUND REGULATORY SIGN	ISSUE 2: 13 July 2023
4.03 S.A.F.E.R PLAYGROUND SIGN	ISSUE 2: 13 July 2023
4.04 REGULATORY SIGN FOR SKATE PARK	ISSUE 2: 13 July 2023
4.05 REGULATORY SIGN FOR FITNESS EQUIPMENT	ISSUE 1: 13 July 2023
4.06 REGULATORY SIGN FOR WATER PLAY	ISSUE 1: 13 July 2023
4.07 SUITE OF DOG PARK SIGNS	ISSUE 2: 13 July 2023
4.08 BEACH SAFETY SIGN	ISSUE 1: 13 July 2023
4.09 SUITE OF BEACH ACCESS SIGNS	ISSUE 2: 13 July 2023
4.10 BEACH ACCESS FIRST AID SIGN	ISSUE 1: 13 July 2023
4.11 COASTAL OR CONSERVATION RESERVE WAYFINDING / DIRECTIONAL SIGN	ISSUE 2: 13 July 2023
4.12 COASTAL OR CONSERVATION RESERVE INTERPRETIVE SIGN	ISSUE 1: 9 Nov 2020
4.13 REGULATORY TREE AND/OR VEGETATION VANDALISM SIGN	ISSUE 1: 9 Nov 2020
4.14 STREET NAME SIGN	ISSUE 1: 9 Nov 2020
4.15 BUS STOP – J POLE SIGN (Translink)	ISSUE 1: 9 Nov 2020

4.01 Park and reserve name sign

Recommended Supplier:

Replas, or equivalent.

Product Description:

Single plank MRC Standard Type with Logo – length sized to fit the park name.

Supplied with engraving as per Standard Sign Template No. 1

Supplied with selected 100 x 100mm plaques, International Prohibition Symbols

Materials & Finishes:

Posts and plank sign board – Recycled Plastic Colour to reflect the type of reserve:

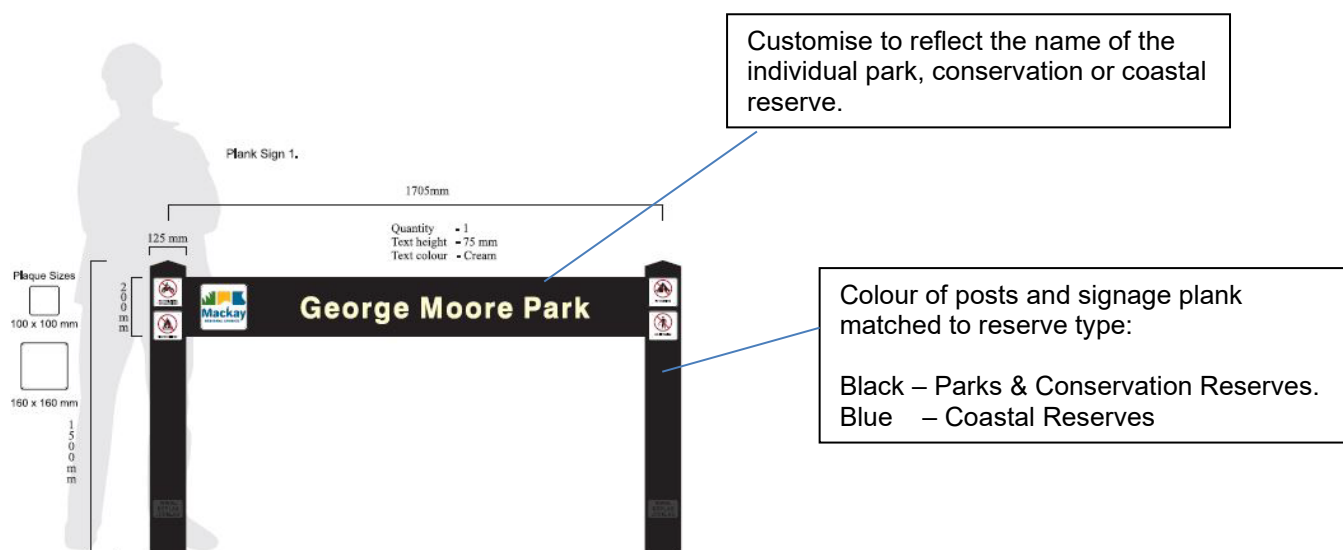
- *Recreational Parks and Conservation Reserves = Black*
- *Coastal Reserves = Blue*

Engraving - Text Height = 90mm

- Text Colour = Cream

General Notes / Requirements:

- *The naming of a recreational park, coastal or conservation reserve is be in accordance with Council's Naming of Infrastructure Assets Policy 090.*
- *Sign location to be visible on approach from the park's or reserve's primary road frontage. Integrate the sign with boundary fencing.*
- *Council will confirm prohibitions enforced in the individual park or reserve to be identified on the name sign i.e. No Camping, Dogs on Leash and so on. Use international symbols fixed to the posts.*
- *Installation of freestanding signs to be in accordance with Standard Drawing A3-09700.*



SIGN 1 - TYPICAL PARK NAME SIGN – LENGTH OF SIGN PLANK ADJUSTED TO SUIT TEXT

4.02 Playground regulatory sign

Recommended Suppliers:

Mackay Stickers and Signs, or equivalent.

Product Description:

600 x 900 Aluminium Sign with rounded corners

Setout and wording of text to be in accordance with Signage Template No. 2

Materials & Finishes:

Post - Hot Dipped Galvanised Post and Mounting Bracket (where required).

Sign – Full Colour Printing on White Background.

General Notes / Requirements:

- *Sign to be located at the primary entrance to the playground. Sign can be fixed to permanent shade structure where provided. Where fixed to a permanent built structure must be both visible to the public on entry into the general play space. All screws used to mount the sign to an existing structure to be stainless steel.*



SIGN 2 - STANDARD PLAYGROUND REGULATOR SIGN

4.03 S.A.F.E.R playground sign

Recommended Suppliers:

Mackay Stickers and Signs, or equivalent.

Product Description:

600 x 900 Aluminium Sign with rounded corners

Setout and wording of text to be in accordance with Signage Template No. 3

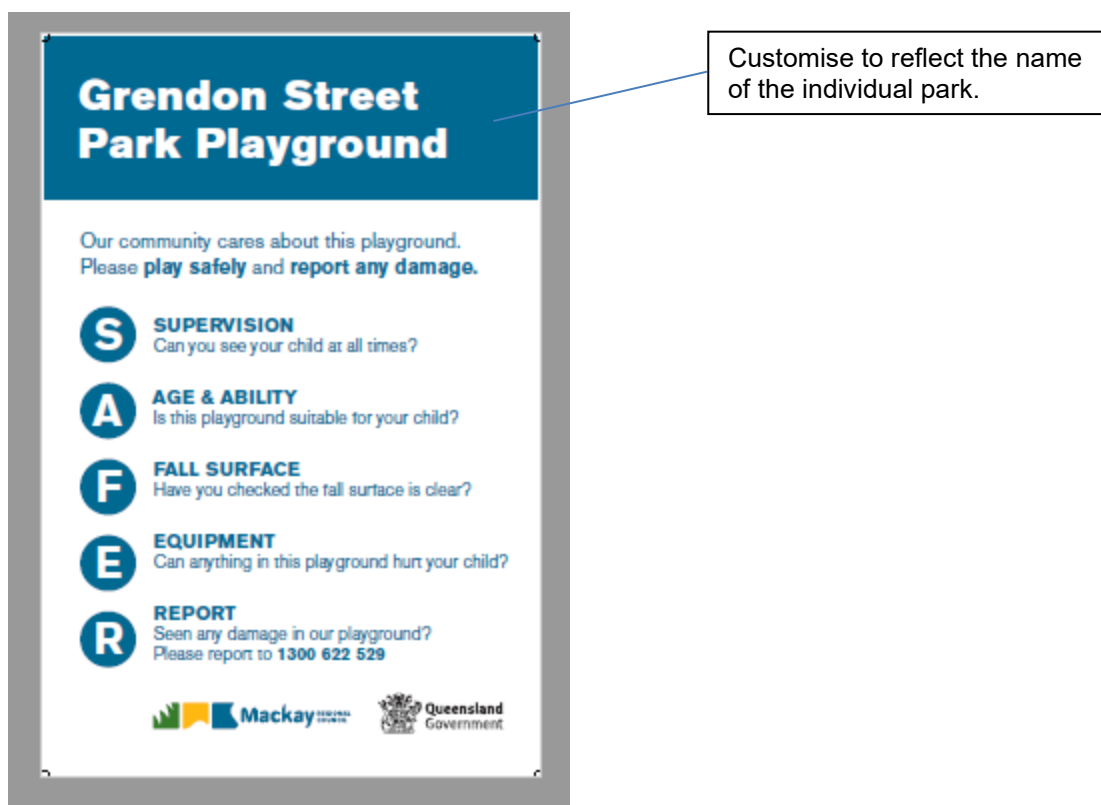
Materials & Finishes:

Post - Hot Dipped Galvanised Post and Mounting Bracket (where required)

Sign – Full Colour Printing on White Background

General Notes / Requirements:

- Sign to be installed in a location within the playground that is visible to users. Sign can be fixed to permanent shade structure where provided. Where fixed to a permanent built structure screws used to mount the sign to be stainless steel.



SIGN 3 - STANDARD S.A.F.E.R PLAYGROUND SIGN

4.04 Regulatory sign for skate parks

Recommended Suppliers:

Mackay Stickers and Signs, or equivalent.

Product Description:

1000 x 1300 Aluminium Sign with rounded corners

Setout and wording of text to be in accordance with Signage Template No. 4

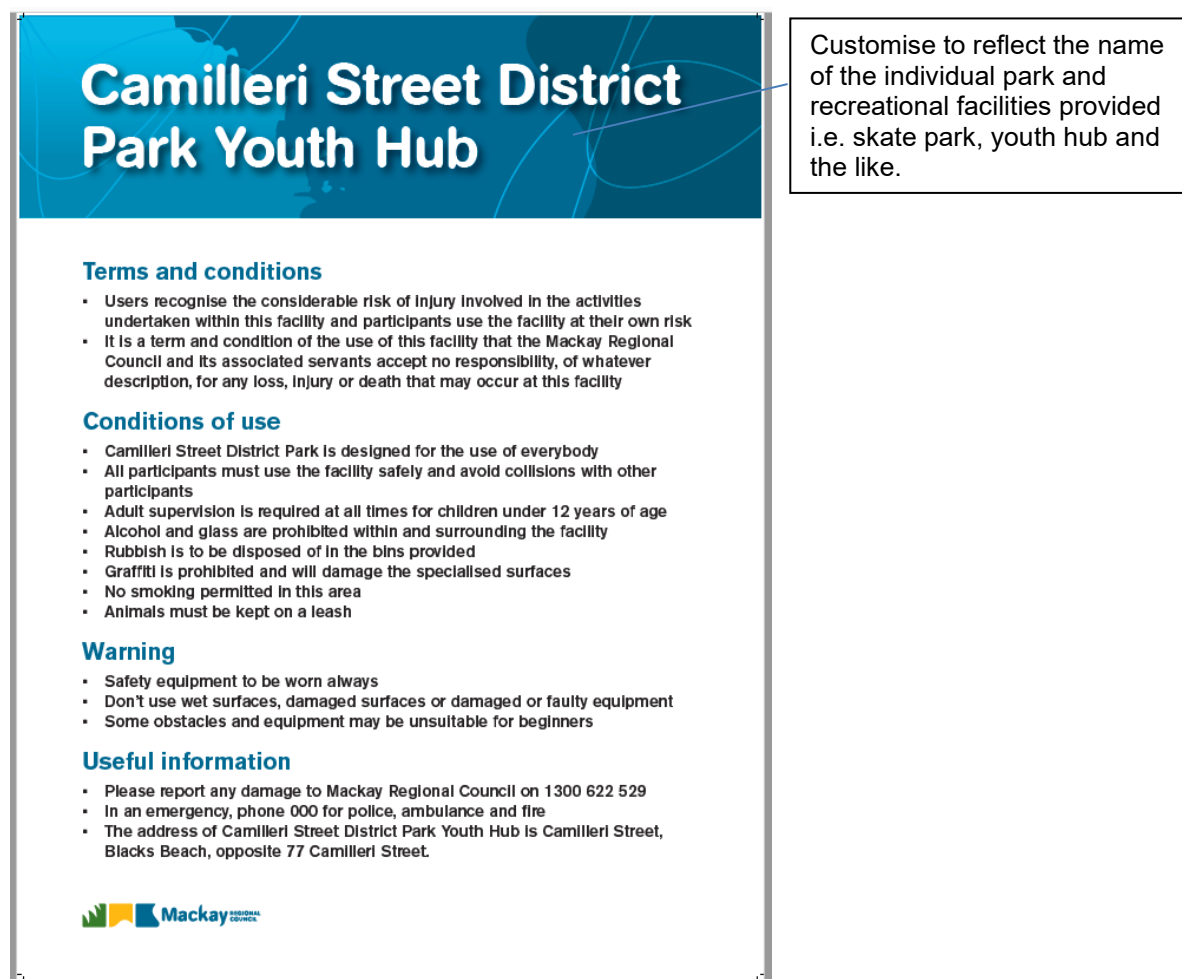
Materials & Finishes:

Post - Hot Dipped Galvanised Post and Mounting Bracket (where required)

Sign – Full Colour Printing on White Background

General Notes / Requirements:

- *Sign to be installed at the main entry to the skate park or all-wheel riding environment. Sign can be fixed to a permanent structure where provided. Where fixed to a permanent built structure screws used to mount the sign to be stainless steel.*



SIGN 4 - REGULATORY SIGN FOR SKATE PARKS

4.05 Regulatory sign for fitness equipment

Recommended Suppliers:

Mackay Stickers and Signs, or equivalent.

Product Description:

600 x 900mm Aluminium Sign with rounded corners

Setout and wording of text to be in accordance with Signage Template No. 5

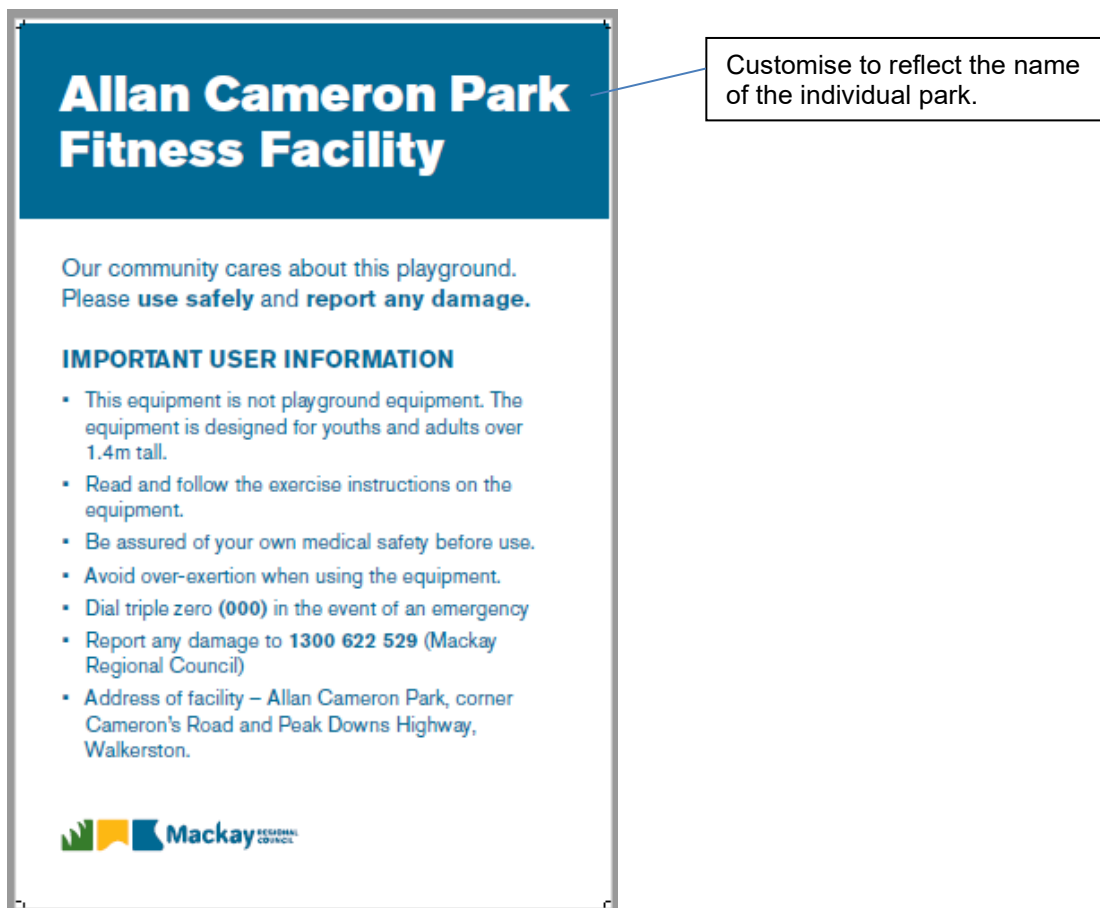
Materials & Finishes:

Post - Hot Dipped Galvanised Post and Mounting Bracket (where required)

Sign – Full Colour Printing on White Background

General Notes / Requirements:

- *Sign to be installed in a location visible to users from fitness / exercise equipment or at the start of an exercise trail. Sign can be fixed to permanent shade structure where provided. Where fixed to a permanent built structure screws used to mount the sign to be stainless steel.*



SIGN 5 - REGULATORY SIGN FOR FITNESS EQUIPMENT

4.06 Regulatory sign for water play

Recommended Suppliers:

Mackay Stickers and Signs, or equivalent.

Product Description:

1000 x 1300 Aluminium Sign with rounded corners

Setout and wording of text to be in accordance with Signage Template No. 6

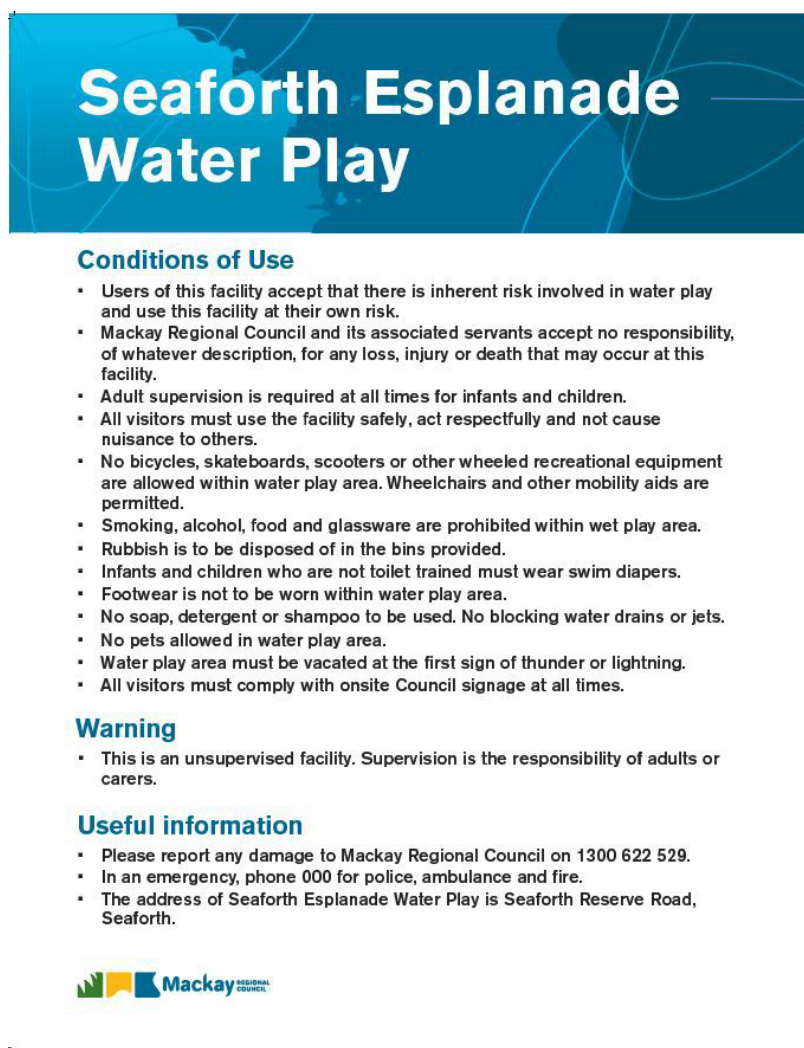
Materials & Finishes:

Post - Hot Dipped Galvanised Post and Mounting Bracket (where required)

Sign – Full Colour Printing on White Background

General Notes / Requirements:

- *Sign to be installed at the main entry to the skate park or all-wheel riding environment. Sign can be fixed to a permanent structure where provided. Where fixed to a permanent built structure screws used to mount the sign to be stainless steel*



Customise to reflect the name of the individual park and recreational facilities,

SIGN 6 - REGULATORY SIGN FOR WATER PLAY

4.07 Suite of dog park signs

Recommended Suppliers:

Mackay Stickers and Signs, or equivalent.

Product Description:

Welcome to Dog Park

*1500 x 1200 Aluminium Sign with rounded corners with 4 Stiffener / Mounting Rails
Layout and wording of text to be in accordance with Signage Templates No. 7*

Small and Large Dog Enclosure Signs

*600 x 450 Aluminium Sign with rounded corners with mounting bracket to fix to gate.
Setout and wording of text to be in accordance with Signage Templates No. 8 and 9.*

Materials & Finishes:

Posts - Hot Dipped Galvanised Post and Mounting Bracket (where required)

Signs - Full Colour Printing on White Background

General Notes / Requirements:

- Signs to be installed at the main entry to the fenced dog enclosure or dedicated small and large dog areas. Fix enclosure signs to front double air-lock gates servicing the dedicated fully-fenced off-leash enclosure.



SIGN 7 - WELCOME TO THE DOG PARK SIGN (COMPULSORY)



SIGN 8 & 9 - SMALL & LARGE DOG ENCLOSURE SIGN

4.08 Beach safety sign

Recommended Suppliers:

Mackay Stickers and Signs, or equivalent.

Product Description:

Beach Access Warning, Regulatory and First Aid Sign Combined

1120mm x 1800mm Aluminium Composite Panel Sign

Setout and wording of text to be in accordance with Signage Template No.8

Materials & Finishes:

Frame – SHS Aluminium 100 x 100 x 3mm

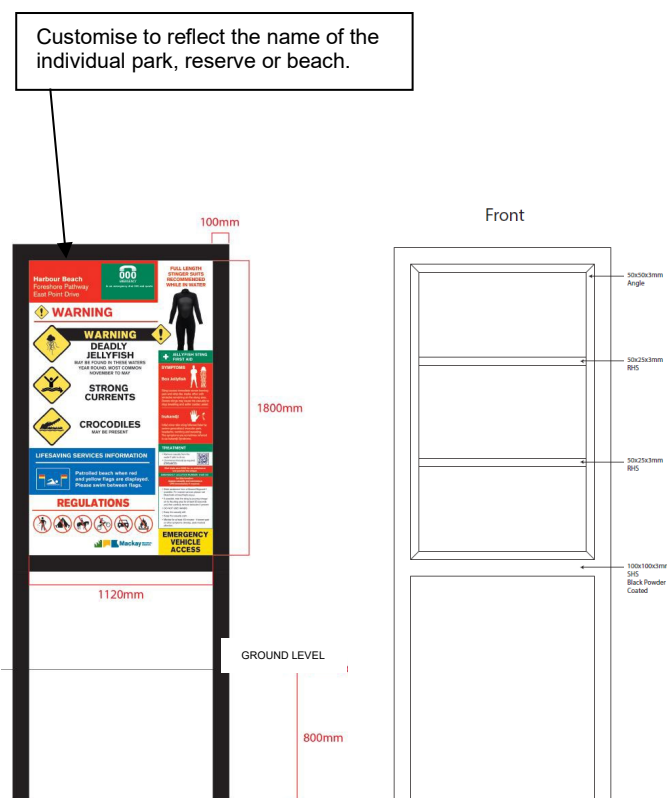
Sign – Full Colour Printing on White Class 1 Reflective Background with Anti-graffiti Laminate Reinforced at Back with Aluminium Brackets

General Notes / Requirements:

- *Single sign to be installed at the primary entry to popular tourist and high visitation beaches. This general information sign is to be located where most visitors pass to access the beachfront such as a main carpark, pedestrian walkway, or obvious beachside activity node.*
- *Graphic layout and colours are to be consistent with the 'National Aquatic and Recreational Signage Style Manual'. The bottom right-hand corner of the sign is available and is where additional information can be provided e.g., Emergency Vehicle Access, Sea Turtle Stranding Number.*



SIGN 8 – BEACH ACCESS SAFETY SIGN



4.09 Suite of beach access signs

Recommended Suppliers:

Mackay Stickers and Signs, or equivalent.

Product Description:

Beach Access Regulatory and Warning Sign

450 x 825mm Recycled Plastic Sign

Setout and wording of text to be in accordance with Signage Template No.9

Beach Access First Aid Sign

450 x 825mm Recycled Plastic Sign

Setout and wording of text to be in accordance with Signage Template No.10

Emergency Location Sign

250mm x 1070mm Aluminium Sign with rounded corners with 3 mounting brackets to the post.

Setout and wording of text to be in accordance with Signage Template 11

Materials & Finishes:

Posts - Hot Dipped Galvanised or Stainless Post and Mounting Bracket (where required)

Signs – Full Colour Printing on White Background = Regulatory and Warning Sign / First Aid Sign

Full Colour Printing on Bright Blue (PMS 301C) Background = Beachside Sign

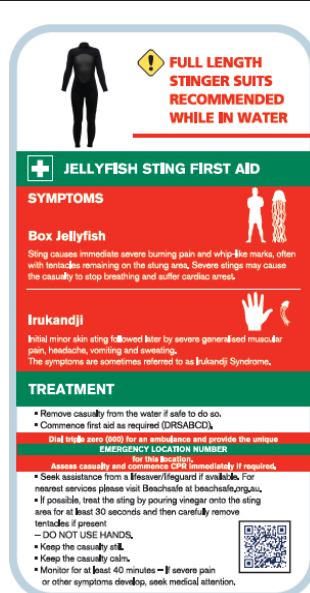
General Notes / Requirements:

- A Beach Access and First Aid Sign is to be installed on the landward side of each formal beach access. The two signs are to be located beside each other preferably on the left-hand side of the beach access. The First Aid Sign on the left and Beach Access Sign (displaying the access's ID) on the right.
- Emergency Location Sign (Blue Paddle) is to be installed on the beachside of each formal beach access and must be legible and clearly visible from the beach.
- Graphic layout and colours are to be in accordance with 'National Aquatic and Recreational Signage Style Manual'.

Customise to reflect the name of the individual park, reserve or beach.



SIGN 9 – BEACH ACCESS SIGN



SIGN 10 – FIRST AID SIGN



SIGN 11 – EMERGENCY LOCATION SIGN

4.10 Beach access first aid sign

Recommended Suppliers:

Mackay Stickers and Signs, or equivalent.

Product Description:

Beach Access First Aid Sign

450 x 825mm Recycled Plastic Sign

Setout and wording of text to be in accordance with Signage Template No.10

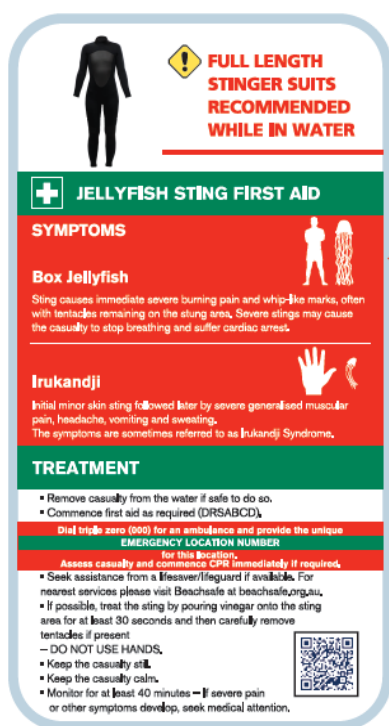
Materials & Finishes:

Posts - Hot Dipped Galvanised or Stainless Post and Mounting Bracket (where required)

Signs – Full Colour Printing on White Background = First Aid Sign

General Notes / Requirements:

- *Where there is existing beach signage (Beach Access and Emergency Location Sign) in place, a new First Aid Sign can be installed. The additional sign is located beside the existing Beach Access sign on the landward side of the formal beach access.*
- *Set the top of the new sign at the same level as the existing Beach Access Sign.*
- *Graphic layout and colours are to be in accordance with 'National Aquatic and Recreational Signage Style Manual'.*



SIGN 10 – FIRST AID SIGN

4.11 Coastal or conservation reserve wayfinding/directional sign

Recommended Suppliers:

Replas, or equivalent

Product Description:

145 x 1500 Recycled Plastic Sign

Supplied with engraving as per Standard Sign Template No.12

Supplied with selected 80dia. round plaques, International Symbols, and 80 x 60mm MRC Logo

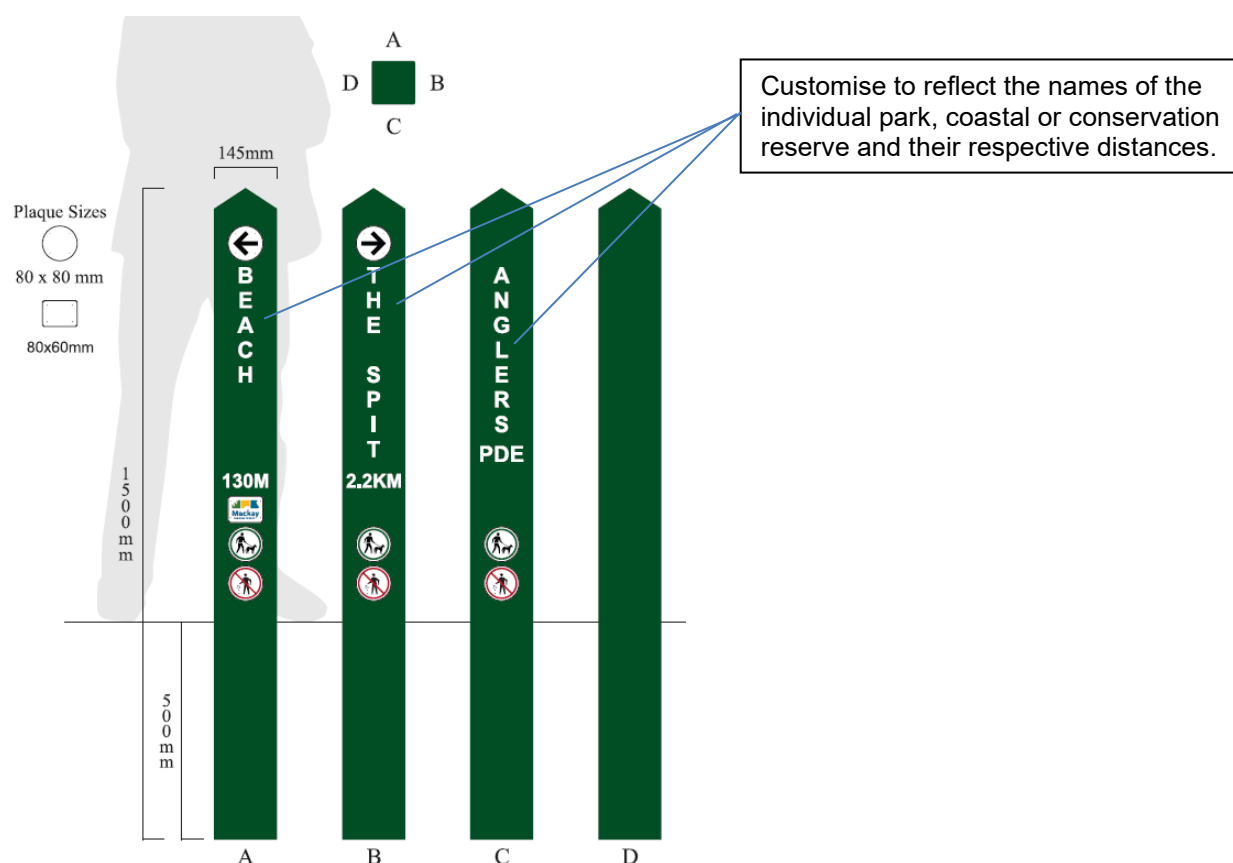
Materials & Finishes:

Posts - Recycled Plastic, Green Colour

Engraving – White Colour

General Notes / Requirements:

- Sign to be installed at the dedicated coastal or conservation reserves location and be clearly visible on approach.
- Council will confirm prohibitions enforced in the individual coastal or conservation reserve to be identified on the wayfinding/directional sign i.e. Dogs on Leash and so on. Use international symbols fixed to the posts.
- Installation of free-standing signs in accordance with Standard Drawing A3-09708.



SIGN 12 – WAYFINDING / DIRECTIONAL SIGN

4.12 Coastal or conservation reserve interpretive sign

Recommended Suppliers:

Mackay Stickers and Signs, or equivalent

Product Description:

Free standing plinth sign

Supplied with 900 x 600 photo-anodised graphic panel adhered to 6 mm Aluminium backing plate

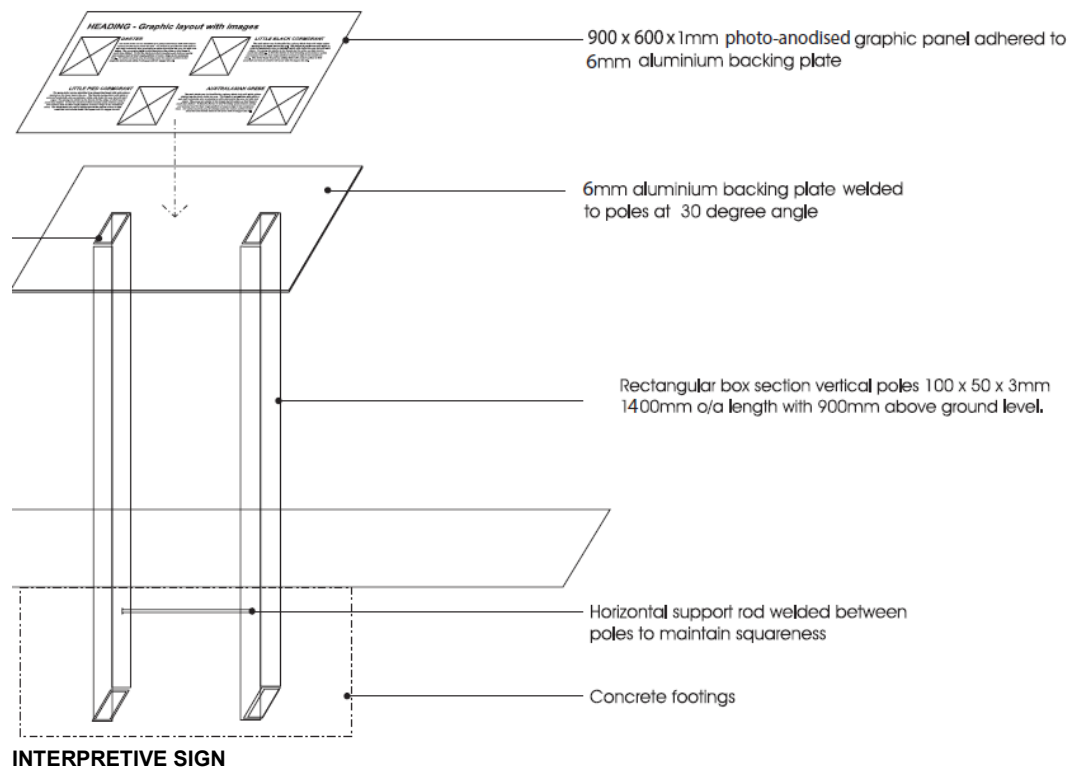
Layout of illustrations and wording of text are customisable including options for full colour printing.

Materials & Finishes:

Posts – Hot Dipped Galvanised or Stainless Post

General Notes / Requirements:

- *Sign to be installed at the dedicated coastal or conservation reserves location and be clearly visible on approach.*
- *Installation of free-standing signs in accordance with Standard Drawing A3-09708.*



4.13 Regulatory tree and/or vegetation vandalism sign

Recommended Suppliers:

Mackay Stickers and Signs, or equivalent

Product Description:

1800 x 3600 Aluminium Sign with rounded corners

Setout and wording of text to be in accordance with Signage Template No. 11

Materials & Finishes:

Posts – 3 x Hot Dipped Galvanised Post with Mounting Brackets (where required)

Sign – Full Colour Printing on White Background

General Notes / Requirements:

- *Sign to be installed at the dedicated coastal or conservation reserves location and be clearly visible on approach.*
- *Installation of free-standing signs in accordance with DTMR Standard Drawing 1363.*



SIGN 13 - TREE AND/OR VEGETATION VANDALISM SIGN

4.15 Bus stop – J pole sign (Translink)

Recommended Suppliers:

Translink

Product Description:

1.6mm Aluminium Head Plate – length and width sized to fit the top of J pole.

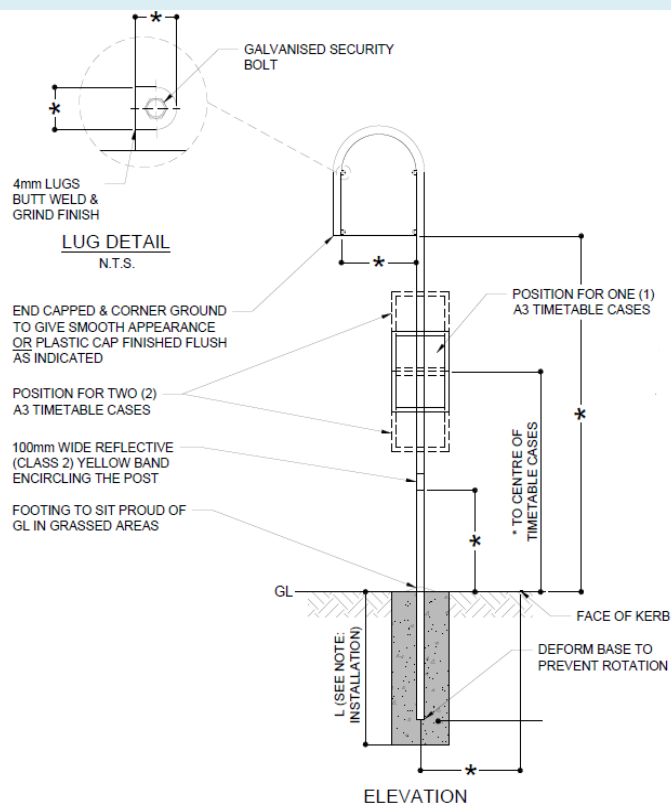
Materials & Finishes:

Post - Hot Dipped Galvanised and Powder Coated in White (PMS White) or Yellow (PMS 116)

Sign Plate – Full Colour Printing on Blue Background with White behind the Stop Name.

General Notes / Requirements:

- Sign should be located at the departure end of the bus stop and perpendicular to the traffic lane.
- The post should be closest to the road and the sign away from the road.
- On kerbed roads, sign should be located 600mm back from the face of the kerb. Where mountable or semi mountable kerbs are used, the clearance should be 600mm from top of kerb. On unkerbed roads, signs should be 600mm clear of the outer edge of the shoulder.
- Installation of sign to be in accordance with Standard Drawing A3-00863.
- Graphic layout and colours of sign plate is to be in accordance with Signage Manual - Bus Network Infrastructure, Translink Division, Department of Transport and Main Roads.



BUS STOP SIGN – J POLE STYLE



TYPICAL ELEVATION

5 Standard fencing and gates

COMPONENTS:	VERSION ISSUE DATE
5.01 RECREATIONAL PARKS	ISSUE 1: 9 Nov 2020
5.02 COASTAL AND CONSERVATION RESERVES	ISSUE 1: 9 Nov 2020
5.03 COUNCIL-CONTROLLED LAND	ISSUE 1: 9 Nov 2020
5.04 HAND AND BARRIER RAILINGS	ISSUE 1: 9 Nov 2020
5.05 VEHICLE AND PEDESTRAIN GATES	ISSUE 1: 9 Nov 2020

5.01 Recreational parks – all types

LOCATION	FENCE TYPE	MATERIALS	COLOUR	FINISH	CURRENT MRC STANDARD DRAWING REF:
Road Frontage	Post and Metal Rail Fence - Contemporary ¹ .	Recycled Plastic Bollards – Square Profile. Galvanised or 316 Stainless Steel Rail	Black Silver	Standard	A3-00916
Shared Boundary	Timber Paling Fence – 1.8m Ht ³ .	Treated Pine	Natural	Timber allowed to weather naturally.	A3-09735
Playground	Child Safety Fence – 1.2m Ht.	Aluminium Posts and Panels – heavy gauge components required.	Black	Powder Coated	A3-09702
Dog Parks	Post and Chain Wire Mesh Fence – 1.5m Ht.	Hot Dipped Galvanised Steel.	Black	Powder Coated / PVC Fusion Bonded.	A3-09701

Notes:

1. The use of timber or log post and rail fencing in recreational parks is to be phased out and progressively replaced with the contemporary fencing.
2. Used in association with the Post and Metal Rail Fencing installed to park frontages.
3. Position palings to the reverse or park-side to discourage climbing and unauthorised access into adjoining private property from the park.

5.02 Coastal and conservation reserves

LOCATION	FENCE TYPE	MATERIALS	COLOUR	FINISH	CURRENT MRC STANDARD DRAWING REF:
Coastal Reserves ¹	Beach Protection Fencing - Post and Rail	'Tanalith E' Treated Pine Lathe Logs	Shade cloth to be sand coloured.	Timber allowed to naturally weather.	A4-00160
	Beach Protection Fencing – Post and Rail with Shade Cloth (Sand Drift)	Galvanised Wire Mesh and Fixings. Shade Cloth			A3-09709
Coastal Reserves	Temporary Dune Protection Fencing	Steel Star Pickets, Galvanised Fencing Wire fitted with Shade Cloth.	Shade cloth to be sand coloured.	NA	A3-09710
Conservation Reserves	Type 1 - Four Strand Wire Fence. or Type 2 – Six Strand Wire Fence. or Type 3 – Six Strand Wire Fence.	Hardwood Timber Posts and Struts. 1.8m Steel Star Pickets. Galvanised Fencing Wire ² .	Standard / no applied colours.	All buried parts of posts or struts to be Creosote Treated. Timber allowed to naturally weather.	A3 – 03893

Notes:

1. Use of each type of Beach Protection Fencing or Temporary Sand Fencing will be influenced by the individual site conditions and adjoining land use.
2. Plain wire is to be substituted for barbed wire when used in conservation and/or environmental areas.

5.03 Council controlled land (excluding recreational parks, coastal and conservation reserves)

LOCATION	FENCE TYPE	MATERIALS	COLOUR	FINISH	CURRENT MRC STANDARD DRAWING REF:
Shared boundary	Timber Paling Fence – 1.8m Ht ² . or	Treated Pine	Natural	Timber allowed to weather naturally.	A3-09735
	Type 1 - Four Strand Wire Fence ¹ .	Hardwood Timber Posts and Struts. 1.8m Steel Star Pickets. Galvanised Fencing Wire ² .			A3 – 03893

Notes:

1. Plain wire is to be substituted for barbed wire when installed in an urban context or where the adjacent land use will be frequently used by the public.
2. Position palings to the reverse or Council owned land to discourage climbing and unauthorised access into adjoining private property from the Council owned land.

5.04 Gates and entry devices

LOCATION	GATE TYPE	MATERIALS	COLOUR	FINISH	CURRENT MRC STANDARD DRAWING REF:
Recreational Parks	Maintenance Vehicle Gate - Sliding Rail System ¹ . or Hinged Gate	Recycled Plastic Bollards – Square Profile. Galvanised or 316 Stainless Steel Rail	Black Silver	NA	A3-00916
	Playground Safety Gate – fitted with child proof locking mechanism.	Aluminium	Black	Power coated	A3-09702
	Dog Park Gate - Double gate system fitted with child proof locking mechanism.	Hot Dipped Galvanised Steel	Black	Powder coated/PVC fusion bonded.	A3-09701
	Dog Park Maintenance Vehicle Gate	Hot Dipped Galvanised Steel	Black	Powder coated/PVC fusion bonded.	A3-09701

Notes:

1. Used in association with the Post and Metal Rail Fencing installed to park frontages.

6 Standard hard-scape materials and surface finishes

COMPONENTS:	VERSION ISSUE DATE
6.01 PATHS, HARDSTAND, FLOOR AND FURNITURE SLABS	ISSUE 1: 9 Nov 2020
6.02 FOOTPATH TRETMENT MACKAY CITY CENTRE LOCAL PLAN AREA	ISSUE 1: 9 Nov 2020
6.03 EDGING TREATMENTS	ISSUE 1: 9 Nov 2020
6.04 RETAINING WALL < 0.9m	ISSUE 1: 9 Nov 2020
6.05 DECKING AND BOARDWALKS	ISSUE 1: 9 Nov 2020
6.06 BEACH ACCESS	ISSUE 1: 9 Nov 2020
6.07 ROAD MEDIANS, ISLANDS AND THRESHOLD TREATMENTS	ISSUE 1: 9 Nov 2020

6.01 Paths, hardstands, shelter and furniture slabs

COMPONENT	MATERIAL	COLOUR	FINISH	MRC STANDARD DRAWING REF:
Paths - All types (excluding Mackay City Centre Local Plan area)	Concrete	Plain Grey	Broom Finish	A2-00500
Hardstands (excluding carparks)	Concrete	Plain Grey	Broom Finish	NA
Feature inlays and/or node treatments to paths and areas of hardstands ¹ .	Pavers – concrete, clay or natural stone. or Exposed aggregate or coloured concrete.	<i>Contrasting colours subject to approval. Grey and natural tones recommended ². Surface of the inlay strips or panels to be roughened (i.e. non-slip surface).</i>		A3-09697
Shelter and furniture slabs	Concrete	Plain Grey	Broom Finish	A3-09695
Discrete tactile ground surface indicators (TGSi) ³	316 Stainless Steel	Silver	With/without carb infill.	NA ⁵
Integrated TGSi ⁴	Concrete	<i>Charcoal or dark grey preferred where installed over light coloured concrete. Contrasting colours subject to approval and compliance with AS1428.4.1 for slip resistance rating(R11), colour luminance contrast and tactile indicator dimensions. Natural tones preferred where possible.</i>		NA ⁵

Notes:

1. To avoid future maintenance demands over and above that of a standard concrete surface, the use of contrasting materials to distinguish nodes or the hierarchy of pathways will be accepted by Council only in limited circumstances where located at important/key nodes.
2. An indication of the colour of 'natural tones' is provided in Section 7.
3. Discrete TGSi are individual pads, studs or bars which act as hazard or directional indicators that will be fixed into the pavement surfaces. Discrete TGSi are most suited to retrofit situations.
4. Integrated TGSi are individual paving unit either recessed or set into the pavement surface to act as a hazard or directional indicators.
5. In streetscapes, TGSi are to be installed in accordance with Council's Supplementary specification 8500 and Notice to consultants 033,

6.02 Footpath treatment in Mackay City Centre Local Plan Area

COMPONENT	MATERIAL	COLOUR	FINISH	MRC STANDARD DRAWING REF:
Footpath	Concrete	Plain Grey	Broom Finish	A3-00989; or A3-03899
	Pavers ¹	Charcoal, AS2700 B64	Shotblast	
Trees integrated into hardstand areas or widen sections of path ²	Pervious pavement – resin bonded aggregate	<i>Contrasting colours subject to approval. Grey and natural tones recommended.</i>		A3-09715

Notes:

1. 300 x 300 x 40mm masonry pavers as per standard drawing.
2. An alternative option to this pervious pavement is the tree grate detailed in section 3.03.

6.03 Edging treatments

COMPONENT	MATERIAL	COLOUR	FINISH	MRC STANDARD DRAWING REF:
Playground Softfall Edging	Concrete	Plain Grey	Broom Finish	A2-00421 A2-00584
Garden Edging	Concrete ¹	Plain Grey	Broom Finish	A2-00420
	Recycled Plastic Pavers – Concrete ²	Black Plain Grey or Charcoal	Plain Standard	A3-09734

Notes:

1. Unreinforced extruded concrete edging 'Kwik-Kerb' or fibre reinforced concrete will not be accepted by MRC due to application's poor- performance in the region's expansive soils.
2. Pavers to be laid on reinforced concrete bed and mortar jointed.

6.04 Retaining walls

COMPONENT	MATERIAL	COLOUR	FINISH	MRC STANDARD DRAWING REF:
Vertical retaining walls	Concrete Block	Charcoal ¹	Split faced ²	A4-00153
Curved retaining walls	Keystone Concrete Block	Charcoal ¹	Split faced ²	A3-09698

Notes:

- 1. The context for the retaining wall needs to be considered in the section of the wall's colour. It is recommended that block colours be submitted for approval. Where the use of Charcoal might not be appropriate due to the context or surround landscaping treatments, the use of natural tones is preferred.*
- 2. Split face finish recommended to discourage graffiti and tagging. The split face also disguises irregularities in the layer of the blockwork.*

6.05 Decks and boardwalks (including beach access stairs)

COMPONENT	MATERIAL	COLOUR	FINISH	MRC STANDARD DRAWING REF:
Metal Work – within 1.5km of the coastline (or in saline environments)	316 Stainless Steel All Screws and Fixings must be 316 Stainless Steel.	Silver or Black Beach Access Stairs – See note 3.	Option to powder-coat or apply 2-Pac Paint Application. (Anti-corrosion treatment).	NA
Metal Work – inland or non-coastal settings	304 Stainless Steel or Hot Dipped Galvanised Steel All Screws and Fixings must be 316 or 304 Stainless Steel.	Silver or Black	Option to power-coat or apply 2-Pac Paint Application (Anti-corrosion treatment).	NA
Trafficable surfaces (i.e. decking)	Composite Fibre – Micro Mesh Panels ² or Boards.	Grey or Charcoal	Textured, Non-slip.	NA

Notes:

1. Recycled plastic products will not be approved. This material has proven to be highly flammable. Although difficult to ignite, MRC has had several grass or bushland fires caused by arson attacks on older boardwalk structures constructed using recycled plastic mesh or decking.
2. Mesh panels are most suited to straight runs. Cutting the mesh can result in unsightly cuts which are difficult to join.
3. Beach Access Stairs – Metalwork to power-coated Blue.

6.06 Beach access

COMPONENT	MATERIAL	COLOUR	FINISH	MRC STANDARD DRAWING REF:
Beach Access - Vehicle	Replas –195mm wide Enduroplank Chain fixing.	Grey or timber coloured	Wide groove finish to Enduroplanks. All nuts, bolts, washers, chain and shackles to be Hot Dipped Galvanised Steel.	A2-00889
Beach Access – Pedestrian only	Replas or equivalent.	NA	All nuts, bolts, washers, chain and shackles to be Hot Dipped Galvanised Steel.	A4-00182

6.07 Road medians, islands and threshold treatments in MRC controlled roads

Schedule below excludes the trafficable road surface. It is generally assumed that road pavements will be asphalt. The Department of Transport and Main Road's (DTMR) Design Manuals are to be consulted where the project context is within a State-controlled roadway.

COMPONENT	MATERIAL	COLOUR	FINISH	MRC STANDARD DRAWING REF:
Kerb and Channel (K&C) – All types.	Concrete	Plain Grey	Broom Finish	A3-00865
Road medians and island infills (hardscape)	Concrete – Stencilled brick pattern with applied colour. or Exposed aggregate concrete. or Concrete with artificial turf overlay ² . or Washed Aggregate < 300mm circumference.	R52 Terracotta as per AS2700. Riverstone Mix ¹ Washed Riverstone.	Broom Finish - Anti-slip. Natural Natural	NA
Road medians and island infill (softscape)	<i>Turf or mass planting is an acceptable option only when the width of the median or island between K&C is more than 1.5m and adequate soil depth and sub-soil drainage can be provided.</i>			A4-00176
Threshold treatment within the trafficable road surface	Concrete segmented pavers or Concrete – Stencilled brick paver with applied colour.	<i>Contrasting colours subject to approval. Grey and natural tones recommended. Darker colours recommended due to staining by vehicle tyres.</i>		A3-09697 A4-00040

Notes:

1. Mackay Sand and Gravel Sales (recommended supplier) – Riverstone aggregate stone colour mix recommended.
2. Selection of the artificial turf will be subject to approval however the product should have a realistic appearance and meet necessary performance requirements including being fire, mould and stain resistant.

7 Indicative images of materials and surface finishes

PATHS, HARDSTANDS, FLOOR AND FUNITURE SLABS



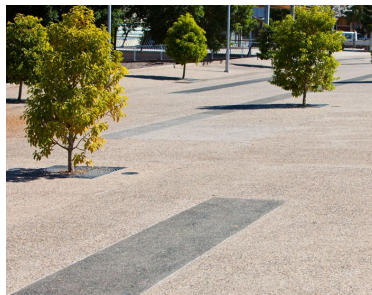
CONCRETE



PAVERS



COLOURED CONCRETE



EXPOSED AGGREGATE



DISCRETE TGS



INTEGRATED TGS

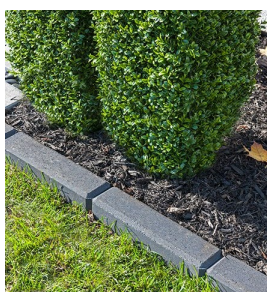


PERVIOUS PAVEMENT

EDGING TREATMENTS



CONCRETE EDGING



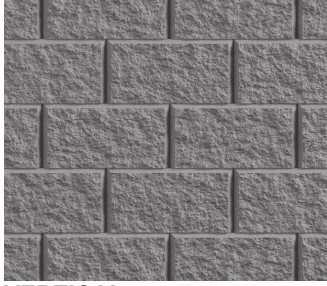
PAVERS



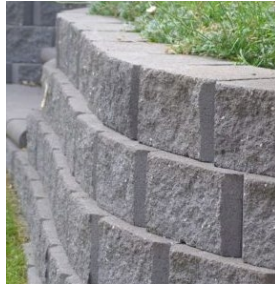
RECYCLED PLASTIC

Note: Images are indicative only

RETAINING WALLS



VERTICAL



CURVED

DECKS AND BOARDWALKS



COMPOSITE FIBRE



MICRO-MESH

BEACH ACCESS

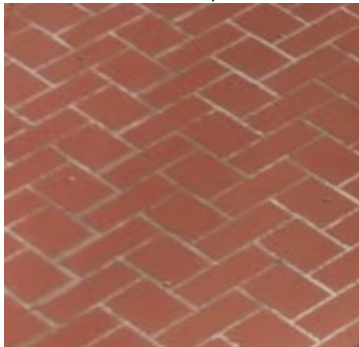


BEACH ACCESS – VEHICLE



BEACH ACCESS – PEDESTRIANS

ROAD MEDIANS, ISLANDS AND THRESHOLD TREATMENTS



STENCILLED CONCRETE



EXPOSED AGGREGATE



ARTIFICIAL TURF

Note: Images are indicative only