

# Wild May

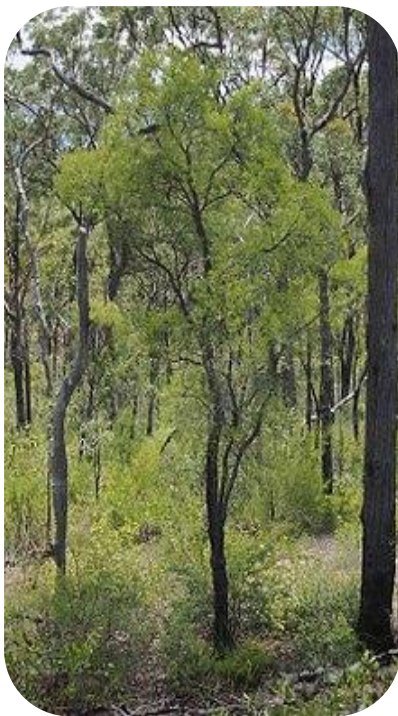
*Leptospermum polygalifolium*

lep-toh-SPER-mum pol-ee-gal-ee-FOH-lee-um

Height: 1 to 4 metres

Spread: 1 to 3 metres

Suitable for hedging



Full sun to light shade



Drought tolerant once established



Well drained sandy soil



Useful source of pollen for honey production

**Wild May is an evergreen variable shrub or slender tree, with rough bark, and fine green foliage which can be aromatic.**

This plant makes a lovely feature planting as it produces a good floral display in late Spring and Summer. Suitable for hedging or screening with regular light pruning only, as this plant dislikes heavy pruning. Older plants can have an interesting gnarled look. Useful as cut flowers, foliage or fruits.