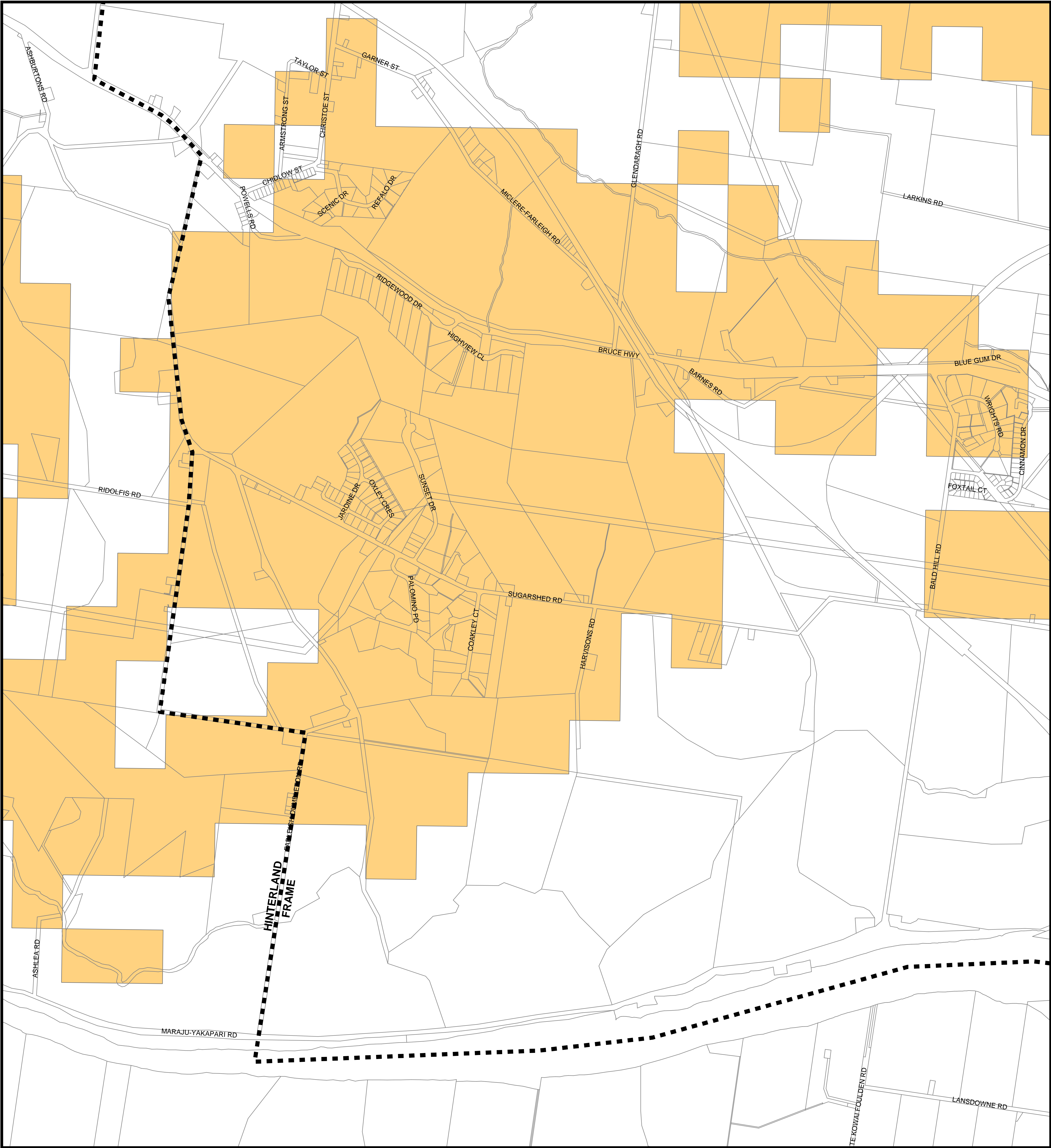


Mackay City Council Planning Scheme

BUSHFIRE MANAGEMENT OVERLAY



PRODUCED BY MACKAY CITY COUNCIL - GIS SECTION

Based on Cadastral Data provided with the permission of the Department of Natural Resources (Current as at May 2005)

While every care is taken to ensure the accuracy of this data, the Department of Natural Resources and Mackay City Council makes no representations or warranties about its accuracy, reliability, completeness or suitability for any particular purpose and disclaims all responsibility and all liability (including without limitation, liability in negligence) for all expenses, losses, damages (including indirect or consequential damage) and costs which you might incur as a result of the data being inaccurate or incomplete in any way and for any reason.

Extent of Overlay



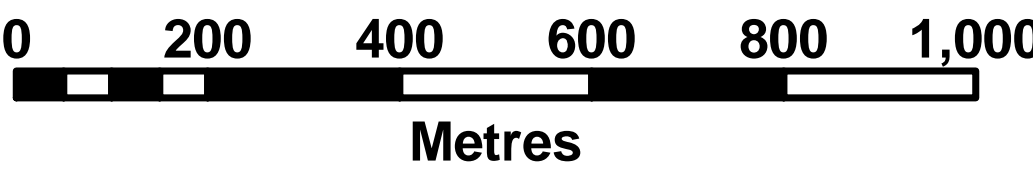
High Risk Bushfire Hazard Area



Medium Risk Bushfire Hazard Area



Locality Boundaries



MACKAY
CITY COUNCIL



Series 18 - Glenella

The Planning Scheme took effect on 24 March 2006

Jul 05, 2005