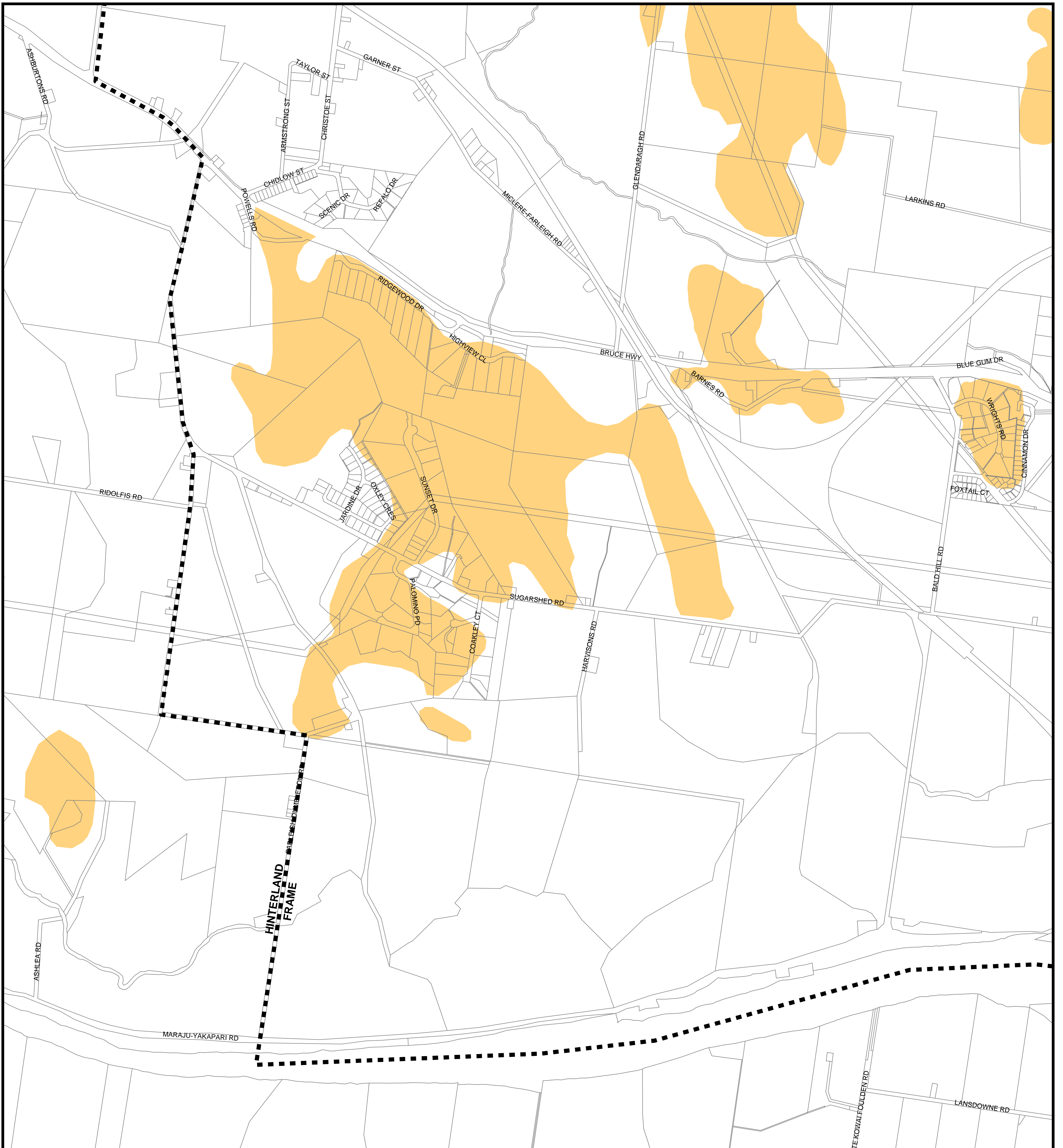


# Mackay City Council Planning Scheme

## Development on Steep Land Overlay

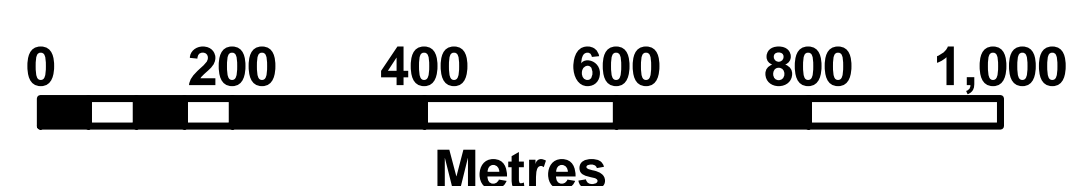


PRODUCED BY MACKAY CITY COUNCIL - GIS SECTION  
 Based on Cadastral Data provided with the permission of the  
 Department of Natural Resources ( Current as at May 2005 )  
 While every care is taken to ensure the accuracy of this data, the Department of Natural Resources  
 and Mackay City Council makes no representations or warranties about its accuracy, reliability,  
 completeness or suitability for any particular purpose and disclaims all responsibility and all liability  
 (including without limitation, liability in negligence) for all expenses, losses, damages (including indirect  
 or consequential damage) and costs which you might incur as a result of the data being inaccurate or  
 incomplete in any way and for any reason.

### Extent of Overlay

 Steep Land 15% & Greater

 Locality Boundaries



**Series 18 - Glenella**

Jul 22, 2005

**The Planning Scheme took effect on 24 March 2006**