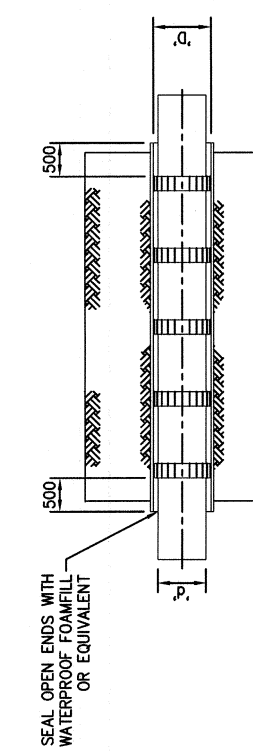
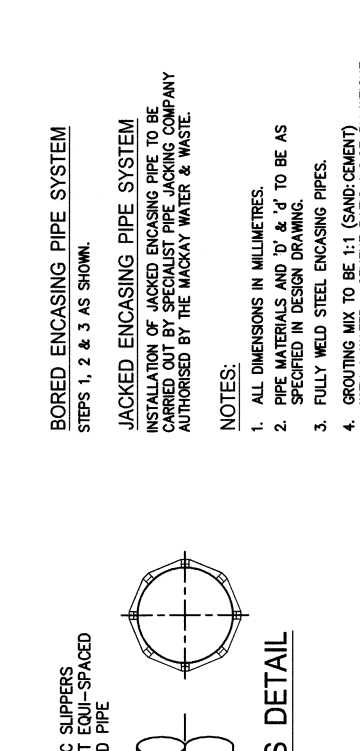


STEP 1



CLEARANCE BETWEEN BORE AND ENCASING PIPE TO BE 50 MIN PLUS ALLOWANCE FOR LEVEL/GRADE ADJUSTMENT

STEP 2



STEP 3

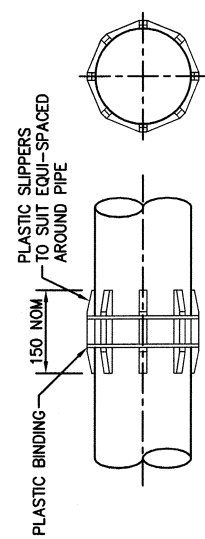
TYPICAL FINISHED INSTALLATION

BORED ENCASING PIPE SYSTEM
STEPS 1, 2 & 3 AS SHOWN.

JACKED ENCASING PIPE SYSTEM
INSTALLATION OF JACKED ENCASING PIPE TO BE CARRIED OUT BY SPECIALIST PIPE JACKING COMPANY AUTHORISED BY THE MACKAY WATER & WASTE.

NOTES:

1. ALL DIMENSIONS IN MILLIMETRES.
2. PIPE MATERIALS AND 'D', 'd' & 'd'' TO BE AS SPECIFIED IN DESIGN DRAWING.
3. FULLY WELD STEEL ENCASING PIPES.
4. GROUTING MIX TO BE 1:1 (SAND:CEMENT) WITH A WATER : CEMENT RATIO 1:0.67 BY WEIGHT USING FINE WELL ROUNDED SAND. PLASTICISERS MAY BE USED.



PIPE SUPPORTS DETAIL

INSTALLATION OF BORED ENCASING PIPE

MRC STANDARD DRAWINGS SUPERCEDES WSAA STANDARD DRAWINGS

C		AMEND		MGR		SGN		JC		DRAWING FILE NAME		COMMERCIAL SERVICES		Mackay Regional Council	
B		MAY08		MODIFIED TO MRC STD		SLR		SURVEY N/A		M:\Engineering Services\Technical Services\Design\Projects\Standard drawings\Mackay Water\WSAA - MRC\SEW CODE\A3-04236		EXECUTIVE MANAGER MACKAY WATER & WASTE REF# 7506		DRAWING No. A3-04236	
A		OCT07		TRANSFER TO MRC TBLOCK		SLR		SURVEY FILE No N/A		DATE OF LAST EDIT May 22, 2009		JASON DEVITT		STANDARD DRAWING BURIED CROSSINGS BORED & JACKED ENCASING PIPE DETAILS	
0				WSSA ORIG.				LEVEL DATUM A.H.D.		JOB No		DATE 27 MAY09		AMEND. C	
NO.		DATE		DESCRIPTION		APPVD.		MERIDIAN		MGA-55		DATE		SHEET 1 OF 1	