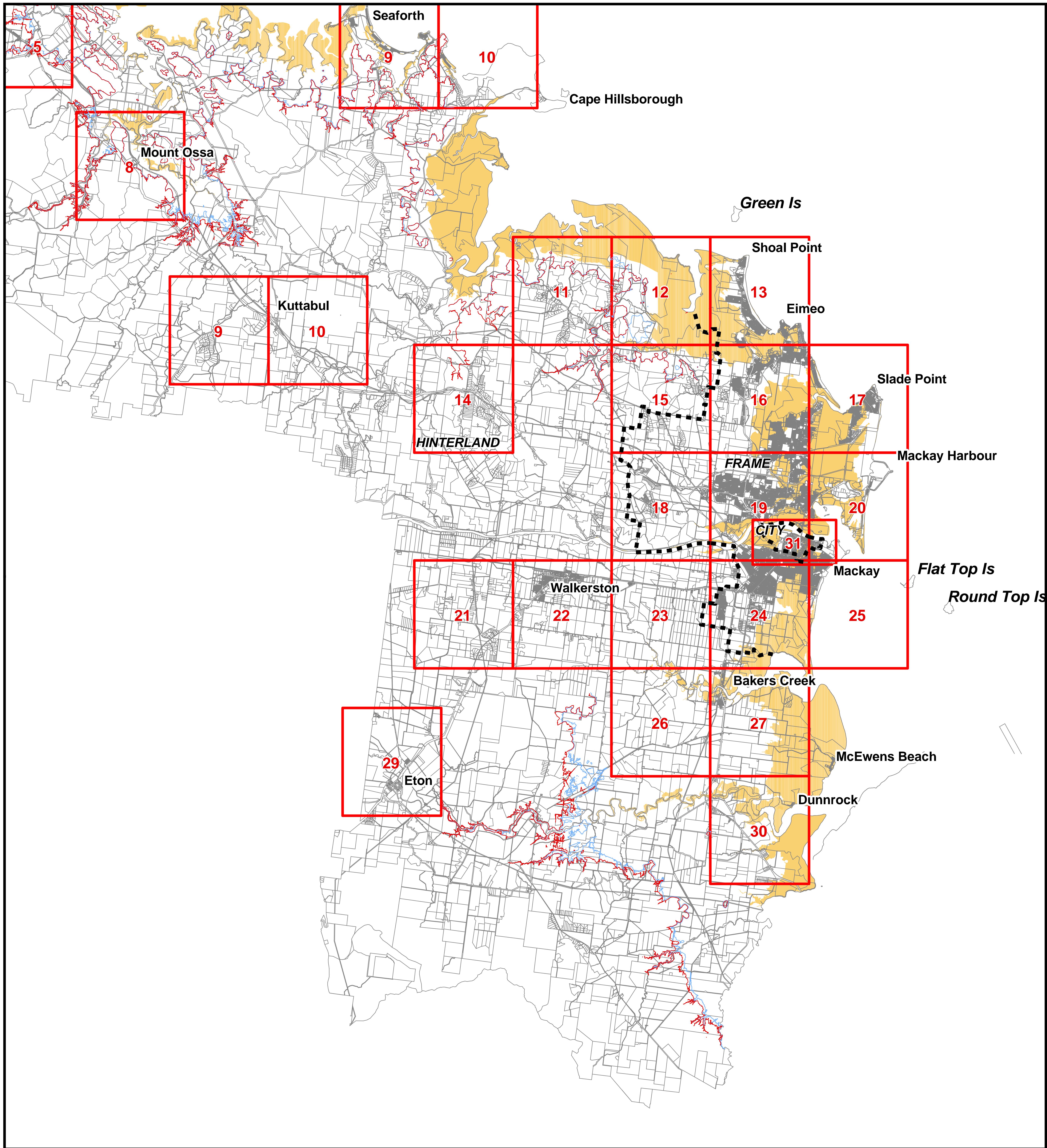


Mackay City Council Planning Scheme

ACID SULFATE SOILS OVERLAYS



PRODUCED BY MACKAY CITY COUNCIL - GIS SECTION

Based on Cadastral Data provided with the permission of the Department of Natural Resources, Mines & Energy.

(Current as at Nov 2005)

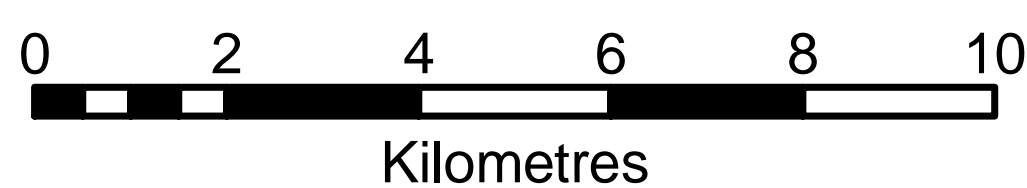
While every care is taken to ensure the accuracy of this data, the Department of Natural Resources, Mines & Energy and Mackay City Council give no warranty in relation to the data (including accuracy, reliability, completeness or suitability) and accepts no liability (including without limitation, liability in negligence) for all expenses, losses, damages (including indirect or consequential damage) and costs which you might incur as a result of the data being inaccurate or incomplete in any way and for any reason.

Extent of Overlay

- Land at or below 5m AHD identified as potential Acid Sulfate soils
- 19 metre contour
- 20 metre contour



----- Locality Boundaries



MACKAY
CITY COUNCIL

Hinterland SE