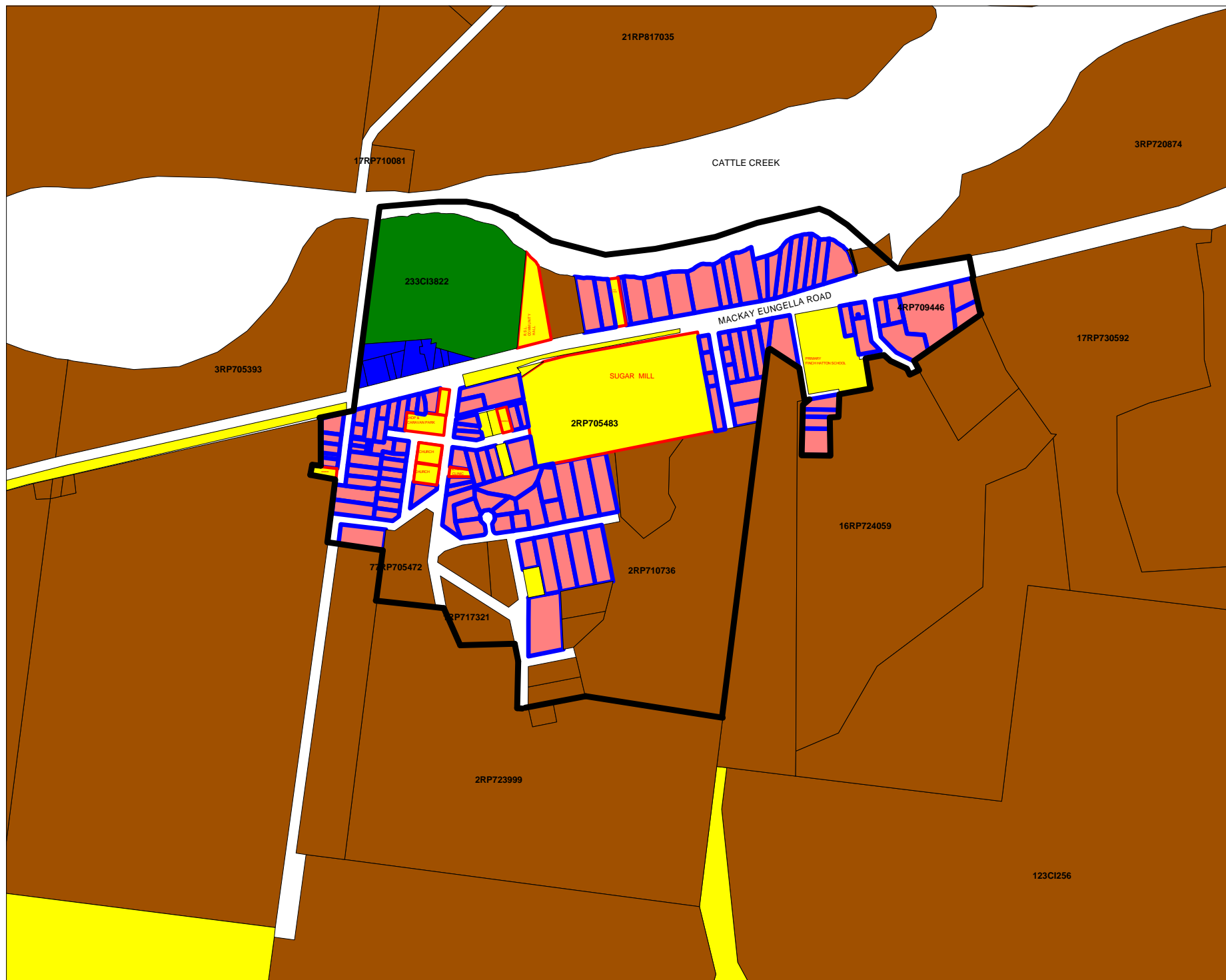


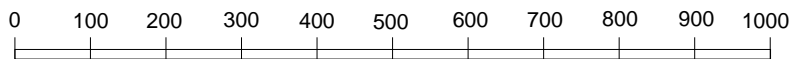
# TOWN OF FINCH HATTON

## MAP 4 OF 27



### LEGEND

- BUSINESS
- HEAVY INDUSTRY
- LIGHT INDUSTRY
- NOXIOUS OR HAZARDOUS INDUSTRY
- PRIVATE OPEN SPACE
- PUBLIC OPEN SPACE
- RESIDENTIAL A
- RESIDENTIAL B
- RURAL A
- RURAL B
- RURAL RESIDENTIAL
- SPECIAL FACILITIES
- SPECIAL PURPOSES
- VILLAGE RESIDENTIAL



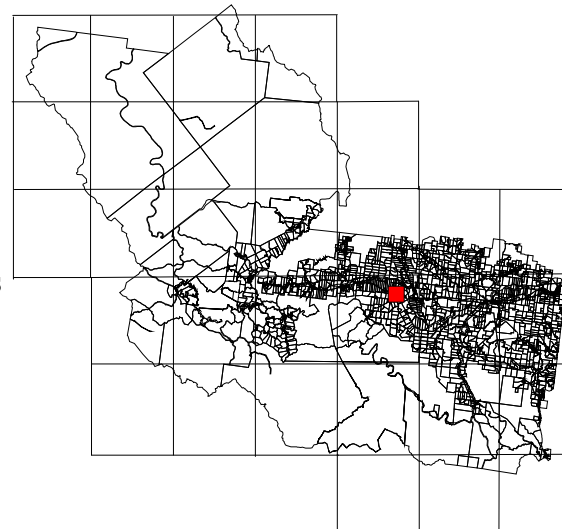
Scale 1 : 10 000  
Metres

DRAWN FOR MIRANI SHIRE COUNCIL BY ULLMAN & NOLAN Pty. Ltd.

CROWN COPYRIGHT RESERVED

PROJECTION : TRANSVERSE MERCATOR  
 GRID : AUSTRALIAN MAP GRID  
 HORIZONTAL DATUM : AUSTRALIAN GEODETIC DATUM 1966  
 BASED ON THE DIGITAL CADASTRAL DATABASE  
 FROM THE QUEENSLAND DEPARTMENT OF NATURAL RESOURCES

THIS PLAN IS A COMPUTERISED REPRODUCTION OF THE CURRENT  
 SCHEME MAP INFORMATION ON ORIGINAL ZONES TOGETHER WITH  
 SUBSEQUENT AMENDMENT TO ZONES.



ADJOINING SHEETS

