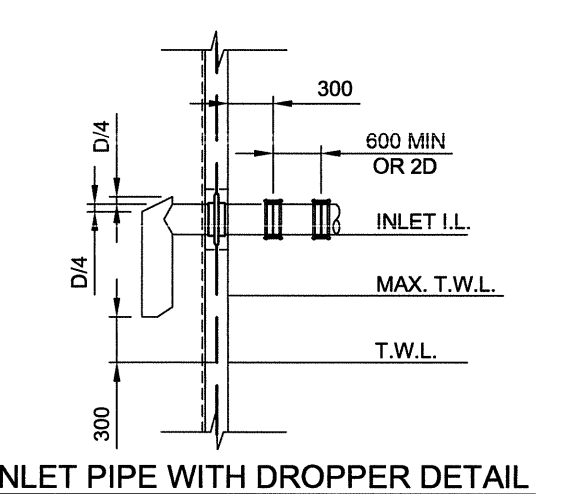
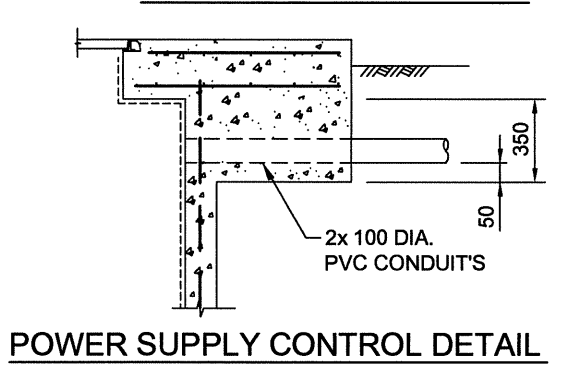
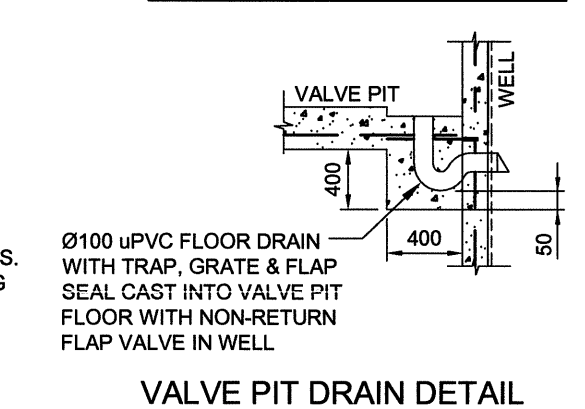
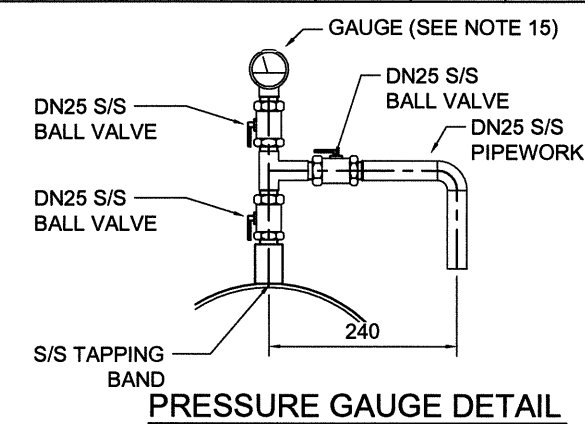
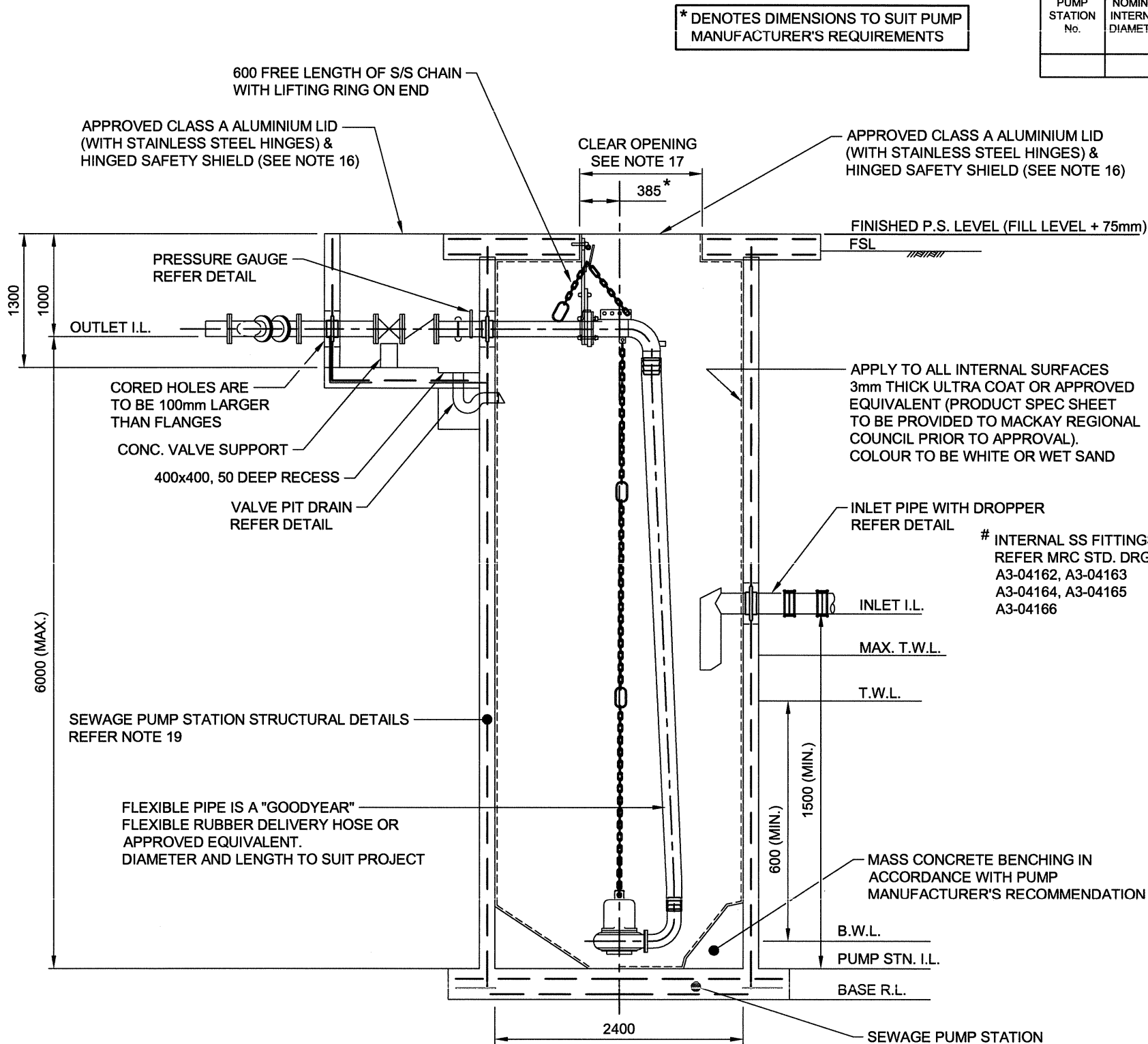


PUMP STATION No.	NOMINAL INTERNAL DIAMETER	FINISHED SURFACE LEVEL	FINISHED PUMP STATION LEVEL	SEWER INLET LEVEL	MAX. T.W.L.	T.W.L.	B.W.L.	PUMP STATION I.L.	BASE R.L.	OUTLET I.L.	INLET PIPE DIAMETER	ISING MAIN DIAMETER	OVERFLO W PIPE DIAMETER	OVERFLO W I.L.



- NOTES:**
- ALL CORED HOLES FOR PIPES TO BE INCLUDED IN CONTRACT FOR CONSTRUCTION OF SEWAGE PUMP STATION.
 - OPENINGS IN WALLS FOR D.I. OUTLET PIPES TO BE SEALED WITH MORTAR OR APPROVED ALTERNATIVE BY PUMP STATION CONTRACTOR.
 - ALL DIMENSIONS DENOTED THUS * TO BE CONFIRMED BY PUMP MANUFACTURER BEFORE COMMENCEMENT OF WORK.
 - DUCTILE IRON PIPEWORK IS TO BE EPOXY COATED INSIDE & OUT AS NOTED.
 - CONNECTION TO RISING MAIN IS TO BE MADE BY RISING MAIN CONTRACTOR.
 - CONCRETE COVER TO REINFORCEMENT TO BE A MINIMUM OF 50mm U.N.O.
 - CONCRETE TO BE CLASS S40 , WITH 20mm AGGREGATE & SLUMP OF 80mm.
 - LIFTING CHAINS (10mm) AND D SHACKLES (12mm) TO BE RATED AND TAGGED, 316 GRADE STAINLESS STEEL. LIFTING RINGS AT 1500mm CENTRES ALONG THE CHAIN
 - ALL BOLTS, FITTED WITH WASHERS, AND FIXINGS TO BE 316 GRADE STAINLESS STEEL.
 - ALL SLUICE VALVES TO BE FLANGED, RESILIENT SEATED AND EPOXY COATED.
 - NON-RETURN VALVES (REFLUX VALVES) TO BE FLANGED RESILIENT SEATED, EPOXY COATED "VALMATIC SWING FLEXI CHECK VALVE" OR APPROVED EQUIVALENT.
 - DISMANTLING JOINTS TO BE EPOXY COATED & HAVE 16mm STAINLESS STEEL BOLTS & NUTS.
 - LOCATION OF VENT PIPE & CONNECTION TO PUMP STATION TO BE APPROVED BY MACKAY REGIONAL COUNCIL. FOR VENT PIPE DETAILS SEE STANDARD DRAWING A3-00852.
 - ANY VERTICAL DEFLECTION IN MAIN SHALL BE LOCATED DOWNSTREAM SIDE OF THE FLOW METER (WHERE REQUIRED).
 - PRESSURE GAUGES SHALL MEET FOLLOWING REQUIREMENTS:
- MINIMUM SIZE OF 1500
- PRESSURE GAUGE RANGE FROM 0 TO 1.7 TIMES THE CLOSED VALVE HEAD OF THE PUMPS
- READING IN KPA
- STAINLESS STEEL
- ACCURACY TO +/- 2%
 - CONTRACTOR TO PROVIDE SHOP DRAWINGS FOR MACKAY REGIONAL COUNCIL ACCEPTANCE PRIOR TO CONSTRUCTION.
 - THE MINIMUM CLEAR OPENING WIDTH IN THE TOP SLAB IS TO BE THE TOTAL OF WIDTH OF THE PUMP INCLUDING THE 90 DISCHARGE BEND PLUS A 75 CLEARANCE ALL ROUND. THE OPENING HOWEVER CANNOT BE LESS THAN THE LENGTH OF THE HOSE CONNECTION BEND PLUS THE SWING-CHECK VALVE PLUS 150 CLEARANCE.
 - INTERNAL PUMP STATION FLOAT SWITCH LOCATIONS:
- HIGH FLOAT SWITCH - 0.5m ABOVE TWL START LEVEL
- IMMINENT OVERFLOW FLOAT SWITCH - 0.3m BELOW OVERFLOW LEVEL
FLOAT SWITCH TO BE PART NUMBER "JK-M15-5" OR FLYGT "ENM10". THE N/C CONTACT ON THE FLOAT SWITCH SHALL BE WIRED DIRECTLY INTO THE RTU TERMINALS.
FLOAT SWITCHES TO BE MOUNTED TO ROOF OPENING WITH MULTITRODE LEVEL SWITCH MOUNTING BRACKETS OR APPROVE EQUIVALENT.
FLOAT SWITCHES TO BE HORIZONTALLY SEPARATED MIN 500mm.
 - REINFORCEMENT & WALL THICKNESS SHOWN ON PLAN IS INDICATIVE ONLY. PUMP STATION TO BE STRUCTURALLY DESIGNED AND CERTIFIED BY A RPEQ STRUCTURAL ENGINEER TO CURRENT AUSTRALIAN STANDARDS AND CODES.
 - BENCHING SHALL BE CLEAR OF PIPEWORK & BOLTS AS PER PUMP MANUFACTURER'S RECOMMENDATIONS.
 - SPACING BETWEEN PUMPS AND CLEARANCE BETWEEN PUMP & FINISHED FLOOR SHALL BE IN ACCORDANCE WITH PUMP MANUFACTURER'S RECOMMENDATIONS.
 - ALL PUMPS ARE TO BE SUPPLIED WITH CABLES 15,000m LONG. THE CABLE MUST BE OF SUFFICIENT LENGTH TO ALLOW THE PUMP TO BE REMOVED TO A POSITION 2,500m FROM THE TOP SLAB OPENING WITHOUT ELECTRICALLY DISCONNECTING IT. THE CABLES ARE TO BE CABLE-TIED TO THE CHAIN AND THESE TIES CAN BE REMOVED AS THE PUMP IS EXTRACTED. EXCESS CABLE IS TO BE SUSPENDED FROM THE CABLE HOOK ON THE WALL PIPE BRACKET.
 - ALL DIMENSIONS IN MILLIMETERS U.N.O.

NOTE : WHERE A PRECAST CONCRETE PUMP STATION IS PROPOSED PRIOR APPROVAL IS REQUIRED BY MACKAY REGIONAL COUNCIL

TYPICAL SECTION

No.	DATE	DESCRIPTION	APVD
A	DEC/14	ORIGINAL ISSUE	
AMENDMENTS AND REVISIONS			

DISCLAIMER. The Mackay Regional Council shall have no liability or responsibility to the user or any other person or entity with respect to any liability, loss or damage caused or alleged to be caused, directly or indirectly, by the adoption and use of this Standard Drawing. Persons must not rely on this Standard Drawing as the equivalent of, or a substitute for, project-specific design and assessment by an appropriately qualified professional.

CHIEF OPERATING OFFICER
WATER & WASTE SERVICES
David Brooker
DAVID BROOKER
DATE *19/12/14*



SEWAGE PUMPING STATION
TYPICAL 2.4m WET WELL - SECTION
FOR WELLS LESS THAN
7m IN DEPTH & OR
LESS THAN 10kW

STANDARD
DRAWING
A3-06029 A