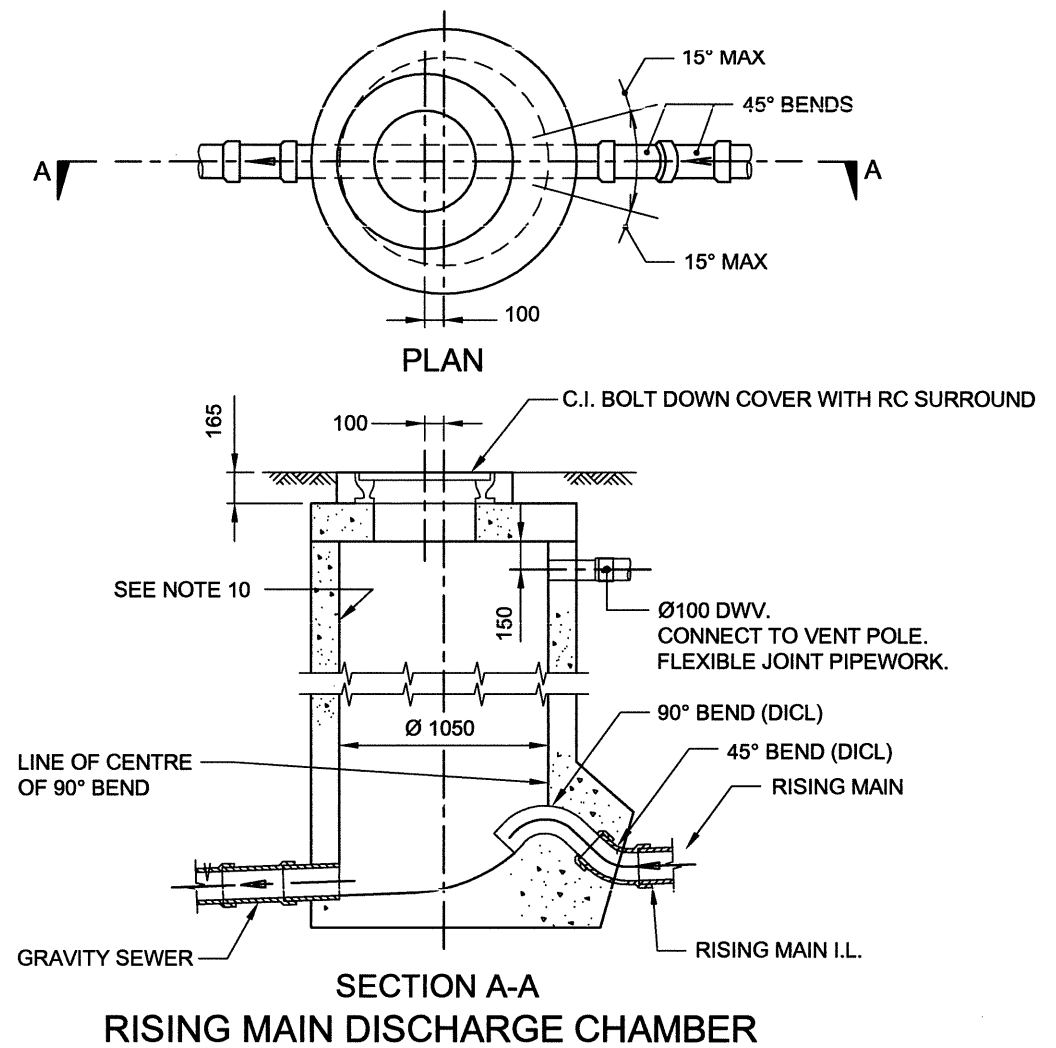


**SECTIONAL ELEVATION  
12m VENT POLE DETAILS**  
(WHERE SPECIFIED - SEE NOTE 14)



**NOTES:**

- ALL DIMENSIONS IN MILLIMETRES U.N.O
- FOR DISCHARGE CHAMBERS LOCATION, REFER PROJECT DRAWINGS.
- BACKFILL IN VENT TRENCH SHALL BE COMPACTED TO AT LEAST THE SAME DENSITY AS THE SURROUNDING SOIL.
- WIND LOADS SHALL BE CALCULATED FOR TERRAIN CATEGORY 2 AND 3 IN ACCORDANCE AS 1170.2.  $M_t=1$ . REGION C.
- DESIGN PARAMETERS FOR CAGE: CAGE SIZE IS TO BE CONFIRMED BY RPEQ AFTER SOIL TESTING.
- DISCHARGE CHAMBER CONCRETE N32 IN ACCORDANCE WITH AS 1379 AND AS 3600.
- ALL STEELWORK HOT DIP GALVANIZED AFTER FABRICATION TO AS 1650.
- BARS GRADE 250 TO AS 1302. PLATE GRADE 250 TO AS 3678.
- ALL BOLTS & WASHERS GRADE AS 2837/316 STAINLESS STEEL. NUTS AND VENT POLE VENT GRADE AS 2837/304 STAINLESS STEEL.
- ANTI-GALLING LUBRICANT "LOCTILE 222 OR 567" OR SIMILAR APPROVED SHALL BE USED ON ALL THREADS AND BETWEEN ALL STAINLESS STEEL ABUTTING SURFACES.
- CORROSION PROTECTION OF DISCHARGE CHAMBER - ALTERNATIVES:  
(a) APPLY TO ALL INTERNAL SURFACES 3mm THICK ULTRA COAT OR APPROVED EQUIVALENT (PRODUCT SPEC SHEET TO BE PROVIDED TO MACKAY REGIONAL COUNCIL PRIOR TO APPROVAL). COLOUR TO BE WHITE OR WET SAND.  
(b) A FABRICATED CHAMBER LINER OF POLYETHYLENE SHALL BE PLACED BEFORE THE WALL AND TOP SLAB IS POURED. BLACK BRUTE CHAMBER UNIT OR SIMILAR.  
(c) AN ALTERNATIVE METHOD OF CORROSION PROTECTION APPROVED BY MACKAY REGIONAL COUNCIL.
- ANY CHAMBER WITHIN 100m DOWNSTREAM OF RISING MAIN DISCHARGE TO BE PROTECTED IN SIMILAR MANNER TO DISCHARGE CHAMBER.
- THE VENT POLE FOUNDATION DESIGN SHOWN ON THIS DRAWING IS GIVEN AS AN EXAMPLE TO THE DESIGNER OF THE INDIVIDUAL PROJECT. THE VENT POLE SUPPORT IS TO BE DESIGNED AND CERTIFIED BY A RPEQ STRUCTURAL ENGINEER TO CURRENT AUSTRALIAN STANDARDS AND CODES.
- VENT POLES TO BE LOCATED AT ALL SEWAGE PUMP STATIONS & AT RISING MAIN DISCHARGE CHAMBERS WHERE SPECIFIED BY MACKAY REGIONAL COUNCIL.

D	DEC/14	DETAILS AMENDED	DB
C	MAY/09	AMEND MGR SIGN	JC
B	MAY/08	MODIFIED TO MRC STD	SLR
A	OCT/07	T'FER TO MRC T'BLOCK	SLR
0		WSAA ORIG	
No.	DATE	DESCRIPTION	APVD
AMENDMENTS AND REVISIONS			

DISCLAIMER. The Mackay Regional Council shall have no liability or responsibility to the user or any other person or entity with respect to any liability, loss or damage caused or alleged to be caused, directly or indirectly, by the adoption and use of this Standard Drawing. Persons must not rely on this Standard Drawing as the equivalent of, or a substitute for, project-specific design and assessment by an appropriately qualified professional.

CHIEF OPERATING OFFICER  
WATER & WASTE SERVICES

DAVID BROOKER

DATE

19/12/14



SEWAGE PUMPING STATION

**RISING MAIN DISCHARGE  
DETAILS & VENT DETAILS**

STANDARD  
DRAWING

A3-00852 D