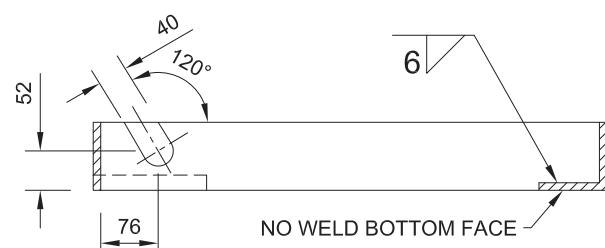
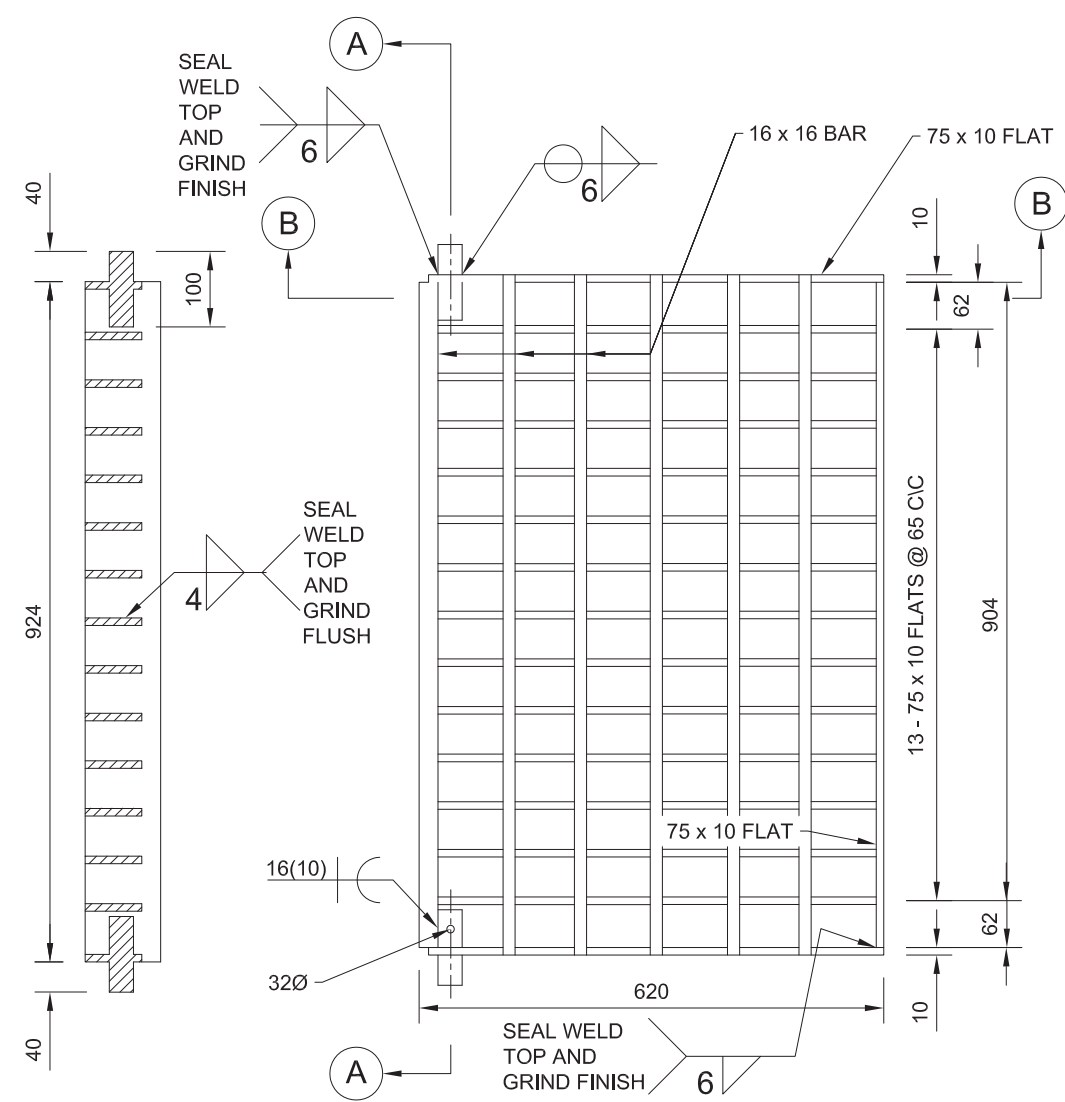


FRAME  
PLAN

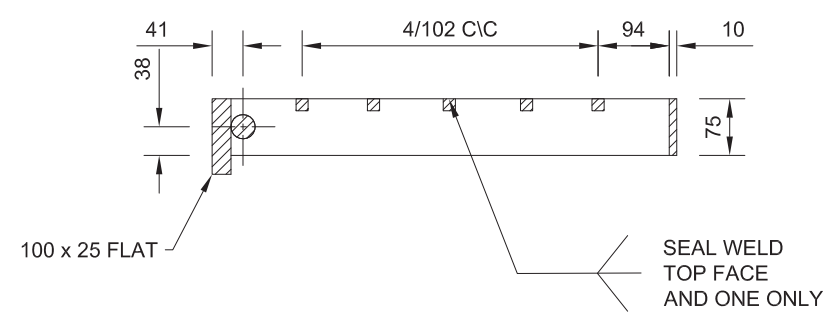


FRAME  
SECTION C - C



GRATE  
SECTION A - A

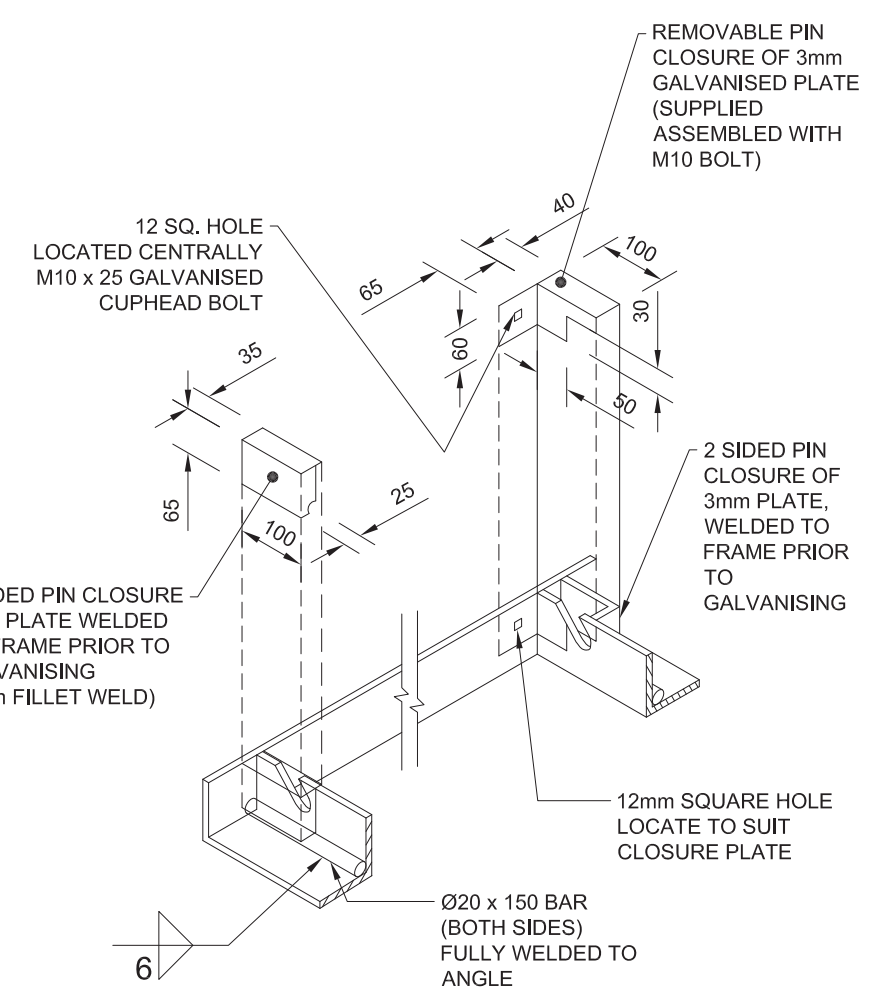
GRATE  
PLAN




GRATE  
SECTION B - B

NOTES:

1. MASS OF GRATE = 85 KG
2. MASS OF FRAME = 39 KG
3. ALL STEEL FLATS GRADE 250 TO AS 3678
4. ALL STEEL BARS AND ANGLES GRADE 250 TO AS 3679
5. GRATE AND FRAME TO BE HOT DIP GALVANISED AFTER FABRICATION TO AS 1650
6. ALL WELDS TO AS 1554. WELDING SYMBOLS TO AS 1101.3
7. REFER STANDARD DRAWING A3-3885 FOR GULLY DETAILS REFER STANDARD DRAWING A3-3886 FOR PRECAST LINTEL DETAILS
8. GRATE AND FRAME CLASS D TO AS 3996
9. ALTERNATIVE FABRICATED STEEL GRATE AND FRAME, GRADE 250 TO AS 3679, MAY BE USED WHEN APPROVED
10. ALL DIMENSIONS IN MILLIMETRES, UNO



HINGE PIN CLOSURE  
TYPICAL DETAIL

				SURVEY	DRAWN	SIGNED	DATE	DIRECTOR ENGINEERING AND COMMERCIAL INFRASTRUCTURE		STANDARD GULLY ROADWAY TYPE GRATE AND FRAME	SHEET 1 OF 1		
C	08/18	MINOR MODIFICATIONS	Graine Hawes	SURVEY FILE No	DESIGNED	SIGNED	DATE	ORIGINAL SIGNED BY S. M. HOLLEY JASON DEVITT			WORKS JOB No.		
B	28/1/15	REVISED FORMAT AND TITLEBLOCK			CHECKED	SIGNED	DATE 11/7/07				DRAWING No.	AMEND.	
A		ORIGINAL ISSUE		LEVEL DATUM	MANAGER TECHNICAL SERVICES								
	DATE	DESCRIPTION	APPVD	MERIDIAN	19/8/18			DATE			28/7/07	A3-03896	C
AMENDMENTS AND REVISIONS					G. HAWES RPEQ 5693			DATE					
\STANDARD DRAWINGS\STORMWATER\A3-03896													