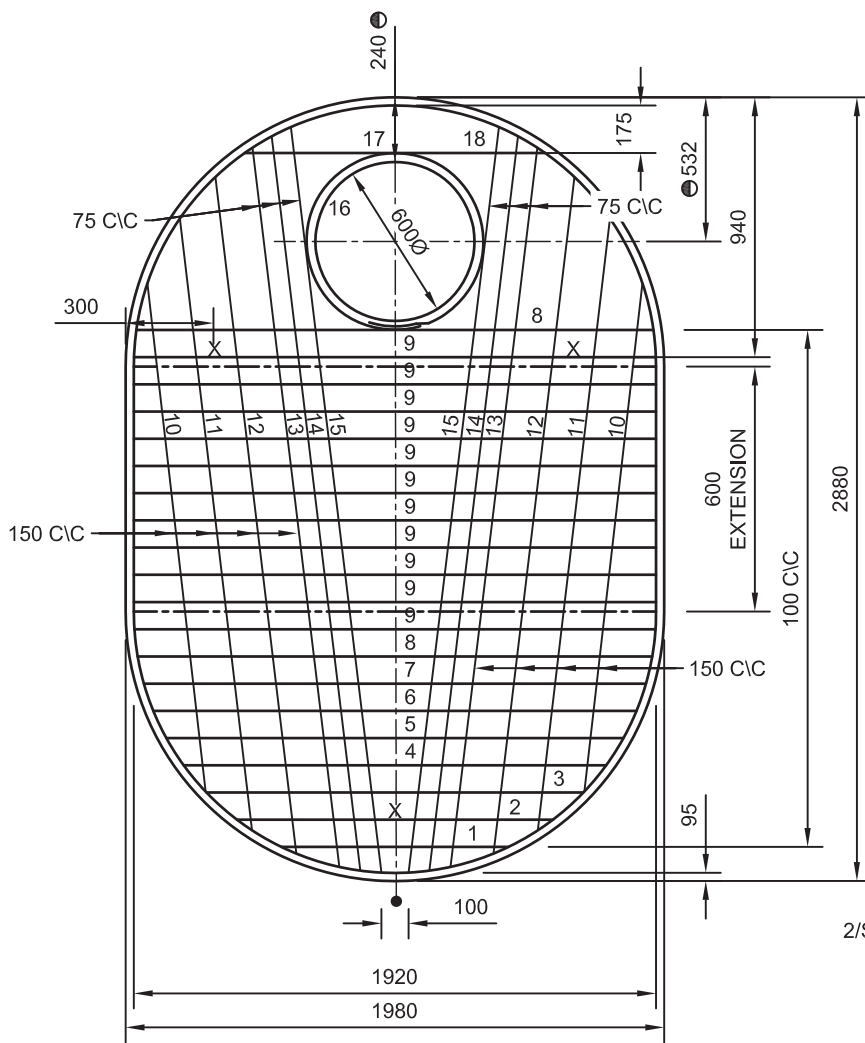


1500 DIA ACCESS CHAMBER
EXTENDED 600

BAR No.	SHAPE	LENGTH	No. OFF	TOTAL
1		835	1	835
2		1160	1	1160
3		1385	1	1385
4		1550	1	1550
5		1680	1	1680
6		1775	1	1775
7		1845	1	1845
8		1890	2	3780
9		1920	11	21120
10		1800	2	3600
11		2200	2	4400
12		2470	2	4940
13		2650	2	5300
14		2700	2	5400
15		2750	2	5500
16		2600	1	2600
17		7795	1	7795
18		1105	1	1105

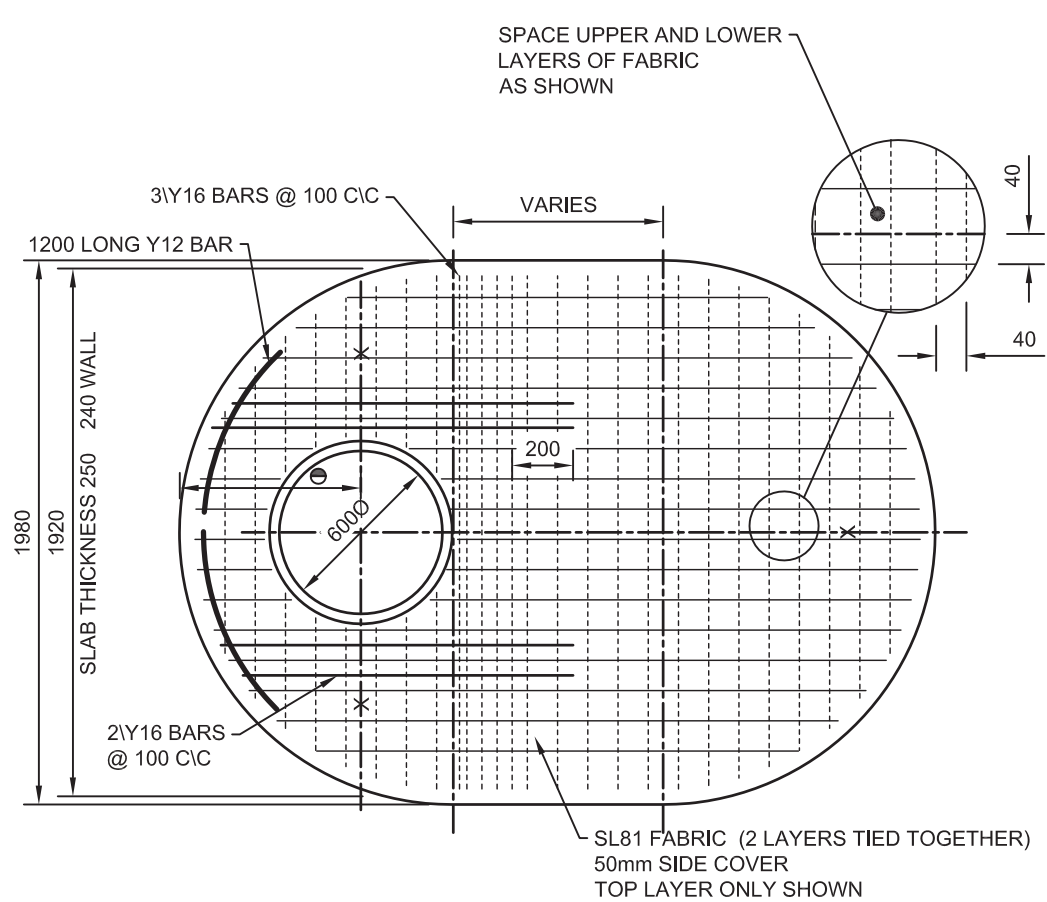
STEEL MASS = 67 kg
CONCRETE VOLUME = 1.03 m³
TOTAL MASS = 2575
TOTAL LENGTH 75770



1500 DIA ACCESS CHAMBER
EXTENDED 900

BAR No.	SHAPE	LENGTH	No. OFF	TOTAL
1		835	1	835
2		1160	1	1160
3		1385	1	1385
4		1550	1	1550
5		1680	1	1680
6		1775	1	1775
7		1845	1	1845
8		1890	2	3780
9		1920	8	15360
10		1560	2	3120
11		1920	2	3840
12		2170	2	4340
13		2300	2	4600
14		2375	2	4750
15		2450	2	4900
16		2600	1	2600
17		7195	1	7195
18		1105	1	1105

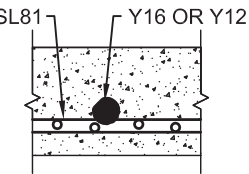
STEEL MASS = 59 kg
CONCRETE VOLUME = 0.90m³
TOTAL MASS = 2250 kg
TOTAL LENGTH 65820



FABRIC REINFORCING DETAIL

LEGEND

- OFFSET TO ACCESS HOLE VARIES :-
a) HOLE IN LINE WITH CHAMBER WALL
OR
b) HOLE OFFSET FORM WALL 460mm (REFER ALTERNATIVE 2 ON STANDARD DRAWING A3-3874)



ROOF SECTION

NOTES

- ROOF DESIGN BASED ON AUSTROADS BRIDGE CODE, W7 WHEEL LOAD, DYNAMIC FACTOR 0.4
- CONCRETE N40 IN ACCORDANCE WITH AS 1379 AND AS 3600
- REINFORCEMENT COVER 30 MIN (BOTTOM FACE)
- REINFORCEMENT :- SL81 FABRIC TO AS 1304
BARS Y12 AND Y16, GRADE 400 TO AS 1302
- REFER STANDARD DRAWING A3-3875 FOR 'REINFORCEMENT DIMENSIONS'
- LIFTING ANCHORS TO BE "SWIFTLIFT" OR EQUIVALENT. 1.8 TONNE, GALVANIZED TO AS 1650 AND FITTED TO MANUFACTURER'S SPECIFICATION AT POINTS SHOWN 'X'
- LIFTING CAPACITY OF MECHANICAL DEVICES TO BE NO LESS THAN 4 TONNES
- ALL DIMENSIONS IN MILLIMETRES

C	03/18	MINOR MODIFICATIONS	Gaerne Hawes
B	22/1/15	REVISED FORMAT AND TITLEBLOCK	
A		ORIGINAL ISSUE	
	DATE	DESCRIPTION	APPVD
AMENDMENTS AND REVISIONS			
\STANDARD DRAWINGS\STORMWATER\A3-03876			

SURVEY	DRAWN	SIGNED	DATE
SURVEY FILE No	DESIGNED	SIGNED	DATE
LEVEL DATUM	CHECKED	SIGNED	DATE 01/3/07
MERIDIAN	MANAGER TECHNICAL SERVICES		
	ORIGINAL SIGNED BY G. HAWES	26/7/07	
	G. HAWES RPEQ 5693	DATE	

DIRECTOR ENGINEERING AND COMMERCIAL INFRASTRUCTURE
ORIGINAL SIGNED BY S. M. HOLLEY JASON DEVITT
DATE 28/7/07



STANDARD
ACCESS CHAMBER
ROOF SLABS
DIA. 1500 EXTENDED 600 AND 900

SHEET 1 OF 1	
WORKS JOB No.	
DRAWING No.	AMEND.
A3-03876	C