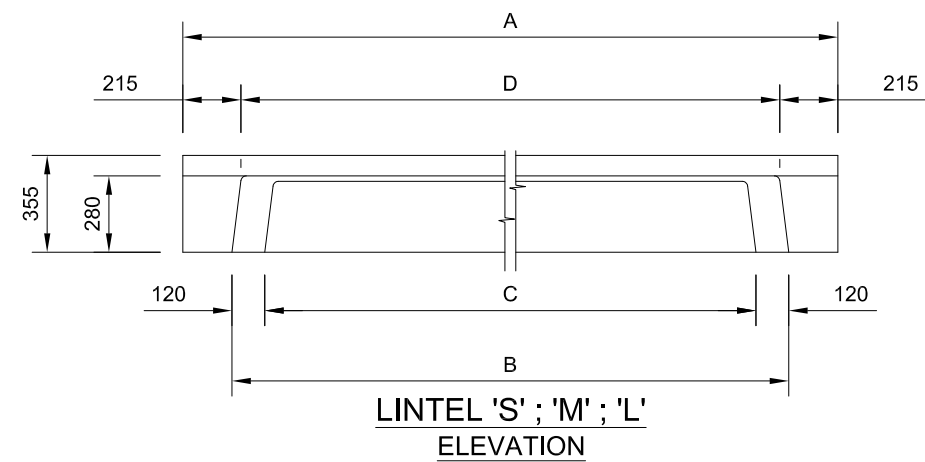
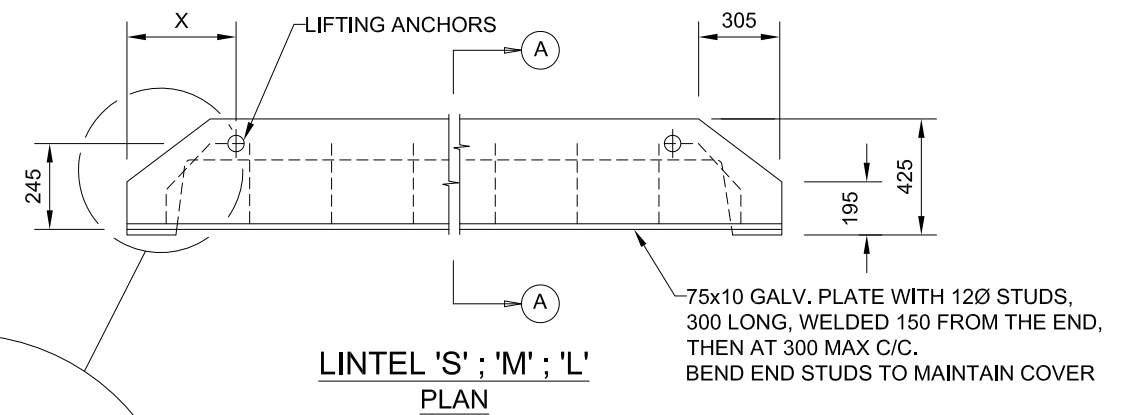


NOTES:

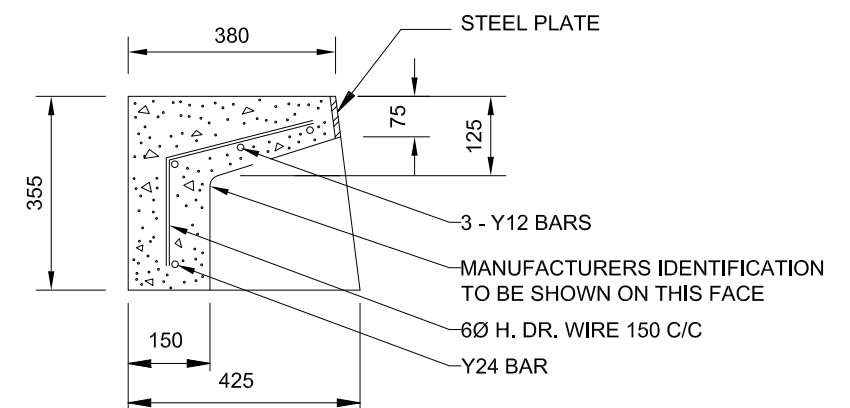
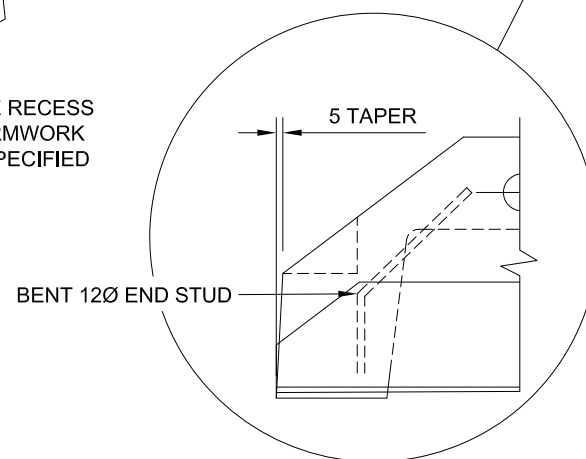
1. CONCRETE N32 IN ACCORDANCE WITH AS 1379 AND AS 3600
2. EACH LIFTING ANCHOR TO BE "SWIFTLIFT" OR EQUIVALENT 1.3 TONNE, GALVANISED TO AS 1650 AND FITTED TO MANUFACTURERS SPECIFICATION
3. REINFORCING STEEL GRADE 400 TO AS 1302. PLACE CENTRALLY, 40 MIN END COVER
4. ALL STEEL FLATS GRADE 250 TO AS 3678
5. ALL WELDS TO AS 1554
6. H. DR. WIRE TO AS 1303
7. STEEL PLATE HOT DIP GALVANISED TO AS 1650
8. ALL DIMENSIONS IN MILLIMETRES, UNO



LINTEL 'S' ; 'M' ; 'L'
ELEVATION




LINTEL 'S' ; 'M' ; 'L'
PLAN



LINTEL 'S' ; 'M' ; 'L'
SECTION A-A

LINTEL TYPE	A	B	C	D	X	MASS (KG)
S	2400	2040	1800	1970	400	445
M	3600	3240	3000	3170	690	550
L	4800	4440	4200	4370	1000	725

D	7.5.2020	DIMENSIONS A, B, AND D AMENDED		GH	SURVEY	DRAWN	SIGNED	DATE	DIRECTOR ENGINEERING AND COMMERCIAL INFRASTRUCTURE ORIGINAL SIGNED BY S. M. HOLLEY JASON DEVITT DATE 28/7/07		SHEET 1 OF 1	
C	03/18	MINOR MODIFICATIONS		GH	SURVEY FILE No	DESIGNED	SIGNED	DATE			WORKS JOB No.	
B	23/1/15	REVISED FORMAT AND TITLEBLOCK				CHECKED	SIGNED	DATE			DRAWING No. AMEND. A3-03884 D	
A	07.2007	ORIGINAL ISSUE										
		DATE	DESCRIPTION	APPVD	LEVEL DATUM	AHD			MANAGER TECHNICAL SERVICES			
AMENDMENTS AND REVISIONS					MERIDIAN	MGA 55			ORIGINAL SIGNED BY 26/7/07 G. HAWES RPEQ 5693 DATE			
		I\STANDARD DRAWINGS\I\STORMWATER\A3-03884										