

**MATERIALS**

**FIBRE ROLLS:** TYPICALLY 200 TO 250mm JUTE, COIR OR STRAW ROLL TIED WITH SYNTHETIC OR BIODEGRADABLE MESH.

**STAKES:** MINIMUM 25 x 25mm TIMBER STAKES.

**INSTALLATION**

1. REFER TO APPROVED PLANS FOR LOCATION AND INSTALLATION DETAILS. IF THERE ARE QUESTIONS OR PROBLEMS WITH THE LOCATION, DIMENSIONS OR METHOD OF INSTALLATION CONTACT THE ENGINEER OR RESPONSIBLE ON-SITE OFFICER FOR ASSISTANCE.

2. WHEN PLACED ACROSS NON-VEGETATED OR NEWLY SEEDED SLOPES, THE ROLLS MUST BE PLACED ALONG THE CONTOUR.

3. IF PLACED ON OPEN OR LOOSE SOIL, ENSURE THE FIBRE ROLLS ARE TRENCHED 75 TO 125mm IN SANDY SOILS AND 50 TO 75mm IN CLAYEY SOILS.

4. ENSURE THE OUTER MOST ENDS OF THE FIBRE ROLL ARE TURNED UP THE SLOPE TO ALLOW WATER TO ADEQUATELY POND UP-SLOPE OF THE ROLL, AND TO MINIMISE FLOW BYPASSING.

5. WHEN PLACED ACROSS THE INVERT OF MINOR DRAINS, ENSURE THE SOCKS ARE PLACED SUCH THAT:

- (i) THE CREST OF THE DOWNSTREAM ROLL IS LEVEL WITH THE CHANNEL INVERT AT THE IMMEDIATE UPSTREAM SOCK (IF ANY);
- (ii) EACH ROLL EXTENDS UP THE CHANNEL BANKS SUCH THAT THE CREST

OF THE FIBRE ROLL AT ITS LOWEST POINT IS LOWER THAN THE GROUND LEVEL AT EITHER END OF THE ROLL.

6. ENSURE THE ANCHORING STAKES ARE DRIVEN INTO THE END OF EACH ROLL AND ALONG THE LENGTH OF EACH ROLL AT A SPACING NOT EXCEEDING 1.2m OR SIX TIMES THE ROLL DIAMETER, WHICHEVER IS THE LESSER. A MAXIMUM STAKE SPACING OF 0.3m APPLIES WHEN USED TO FORM CHECK DAMS.

7. ADJOINING ROLL MUST BE OVERLAP AT LEAST 450mm, NOT ABUTTED.

**MAINTENANCE**

1. INSPECT ALL FIBRE ROLLS PRIOR TO FORECAST RAIN, DAILY DURING EXTENDED PERIODS OF RAINFALL, AFTER SIGNIFICANT RUNOFF PRODUCING STORMS OR OTHERWISE AT WEEKLY INTERVALS.

2. REPAIR OR REPLACE DAMAGED FIBRE ROLLS.

3. REMOVE COLLECTED SEDIMENT AND DISPOSE OF IN A SUITABLE MANNER THAT WILL NOT CAUSE AN EROSION OR POLLUTION HAZARD.

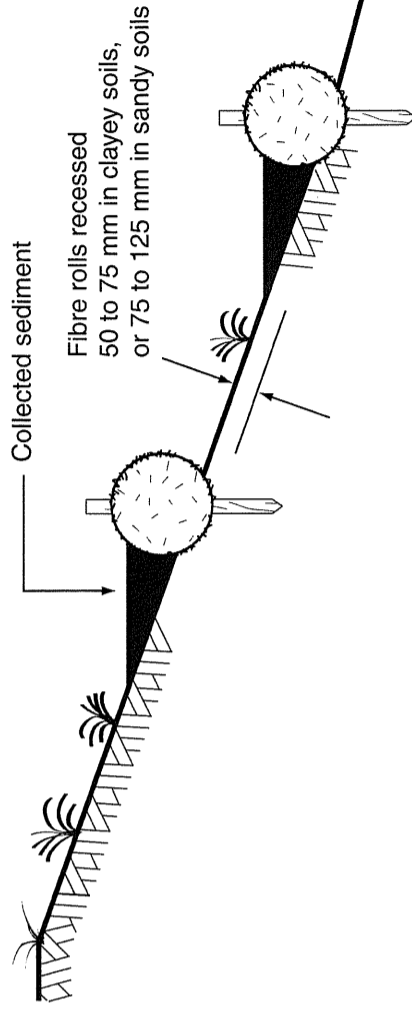
**REMOVAL**

1. ALL EXCESSIVE SEDIMENT TRAPPED BY THE ROLLS MUST BE REMOVED FROM THE DRAIN OR SLOPE IF SUCH SEDIMENT IS LIKELY TO BE WASHED AWAY BY EXPECTED FLOWS.


2. DISPOSE OF COLLECTED SEDIMENT IN A SUITABLE MANNER THAT WILL NOT CAUSE AN EROSION OR POLLUTION HAZARD.

3. THE BIODEGRADABLE CONTENT OF THE STRAW ROLLS MAY NOT NECESSARILY NEED TO BE REMOVED FROM THE SITE.

4. ALL SYNTHETIC (PLASTIC) MESH OR OTHER NON READILY BIODEGRADABLE MATERIAL MUST BE REMOVED FROM THE SITE ONCE THE SLOPE OR DRAIN IS STABILISED, OR THE ROLLS HAVE DETERIORATED TO A POINT WHERE THEY ARE NO LONGER PROVIDING THEIR INTENDED DRAINAGE OR SEDIMENT CONTROL FUNCTION.



**Figure 1 - Typical installation of fibre rolls**

SHEET 1 OF 1		WORKS JOB No. -		DRAWING No. AMEND. A	
<b>FIBRE ROLLS</b>					
					
DIRECTOR ENGINEERING SERVICES		DATE 12/12/11		DATE 20.12.11	
SIGNED PDC		SIGNED PDC		DATE 12/12/11	
DESIGNED PDC		CHECKED PDC		DATE 12/12/11	
MANAGER TECHNICAL SERVICES		G. HAWES		RPEQ 5693	
SURVEY		SURVEY FILE No		LEVEL DATUM AHD	
MERRIDIAN		MGA 55			
AMENDMENTS AND REVISIONS					
NO.	DATE	DESCRIPTION	APPVD		
A	18/11/11	ISSUE FOR CONSTRUCTION			
FILE NAME DESIGN\DOCUMENTS\SESC STD DRAWINGS\...					