

MATERIALS

SOCKS: MINIMUM 200mm DIAMETER SYNTHETIC OR BIODEGRADABLE TUBES MANUFACTURED FROM NON-WOVEN OR COMPOSITE FABRIC SUITABLE FOR THE 'FILTRATION' OF COARSE SEDIMENTS.

FILL MATERIAL: STRAW, CANE MULCH, COMPOSTED MATERIAL (AS4454), COARSE SAND, OR CLEAN AGGREGATE.

STAKES: MINIMUM 25 x 25mm TIMBER.

INSTALLATION

1. REFER TO APPROVED PLANS FOR LOCATION AND INSTALLATION DETAILS. IF THERE ARE QUESTIONS OR PROBLEMS WITH THE LOCATION, DIMENSIONS OR METHOD OF INSTALLATION CONTACT THE ENGINEER OR RESPONSIBLE ON-SITE OFFICER FOR ASSISTANCE.

2. WHEN PLACED ACROSS NON-VEGETATED OR NEWLY SEEDED SLOPES, THE FILTER SOCKS MUST BE PLACED ALONG THE CONTOUR.

3. IF PLACED ON OPEN OR LOOSE SOIL, ENSURE THE FILTER SOCKS ARE TRENCHED 50 TO 100mm INTO THE GROUND.

4. ENSURE THE OUTER MOST ENDS OF EACH FILTER SOCK OR CONTINUOUS ROW OF FILTER SOCKS ARE TURNED UP THE SLOPE TO ALLOW WATER TO ADEQUATELY POND UP-SLOPE OF THE SOCKS, AND TO MINIMISE FLOW BYPASSING.

5. ENSURE THE ANCHORING STAKES ARE DRIVEN INTO THE END OF EACH SOCK AND ALONG THE LENGTH OF EACH SOCK AT A SPACING NOT EXCEEDING 1.2m OR SIX TIMES THE SOCK DIAMETER (WHICHEVER IS THE LESSER).

7. ADJOINING SOCKS MUST BE OVERLAPPED AT LEAST 450mm, NOT ABUTTED.

MAINTENANCE

1. INSPECT ALL FILTER SOCKS PRIOR TO FORECAST RAIN, DAILY DURING EXTENDED PERIODS OF RAINFALL, AFTER SIGNIFICANT RUNOFF PRODUCING STORMS OR OTHERWISE AT WEEKLY INTERVALS.

2. REPAIR OR REPLACE DAMAGED FILTER SOCKS.

3. REMOVE COLLECTED SEDIMENT AND DISPOSE OF IN A SUITABLE MANNER THAT WILL NOT CAUSE AN EROSION OR POLLUTION HAZARD.

REMOVAL

1. ALL EXCESSIVE SEDIMENT TRAPPED BY THE FILTER SOCKS MUST BE REMOVED FROM THE DRAIN OR SLOPE IF SUCH SEDIMENT IS LIKELY TO BE WASHED AWAY BY EXPECTED FLOWS.

2. DISPOSE OF COLLECTED SEDIMENT IN A SUITABLE MANNER THAT WILL NOT CAUSE AN EROSION OR POLLUTION HAZARD.

3. ALL SYNTHETIC (PLASTIC) MESH OR OTHER NON READILY BIODEGRADABLE MATERIAL MUST BE REMOVED FROM THE SITE ONCE THE SLOPE OR DRAIN IS STABILISED, OR THE SOCKS HAVE DETERIORATED TO A POINT WHERE THEY ARE NO LONGER PROVIDING THEIR INTENDED DRAINAGE OR SEDIMENT CONTROL FUNCTION.

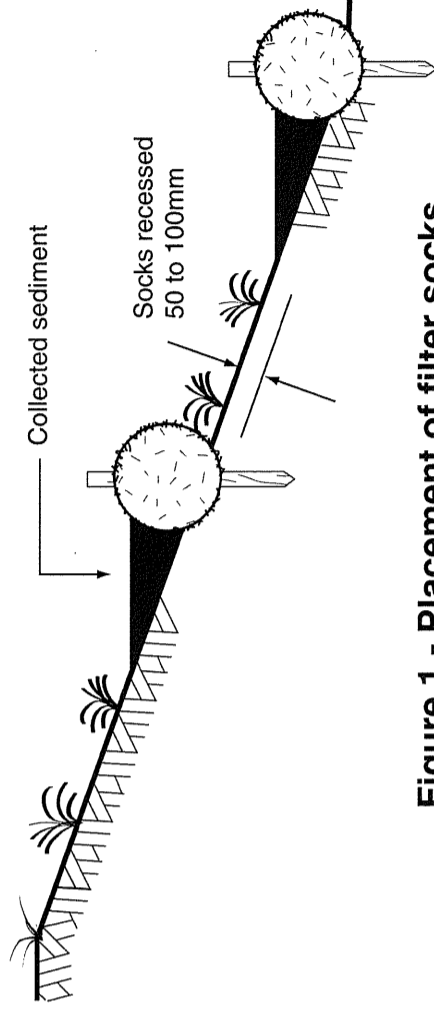


Figure 1 - Placement of filter socks

NO.	DATE	DESCRIPTION	APPVD
A	18/11/11	ISSUE FOR CONSTRUCTION	
AMENDMENTS AND REVISIONS			
FILE NAME DESIGN\DOCUMENTS\SESC STD DRAWINGS\...			

SURVEY	DESIGNED	SIGNED	DATE
	PDG	PDG	12/12/11
SURVEY FILE No	CHECKED	SIGNED	DATE
	PDG	PDG	12/12/11
LEVEL DATUM	MANAGER TECHNICAL SERVICES		
AHD	G. Hawes		
MERIDIAN	G. HAWES RPEQ 5693		
MGA 55			

DIRECTOR ENGINEERING SERVICES	DATE
Stuart Holley	18.12.11
STUART HOLLEY RPEQ 8940	

DATE	DATE
12/12/11	12/12/11



FILTER SOCKS - SHEET FLOW

SHEET 1 OF 1
WORKS JOB No.
DRAWING No.
AMEND.
A3-6800
A