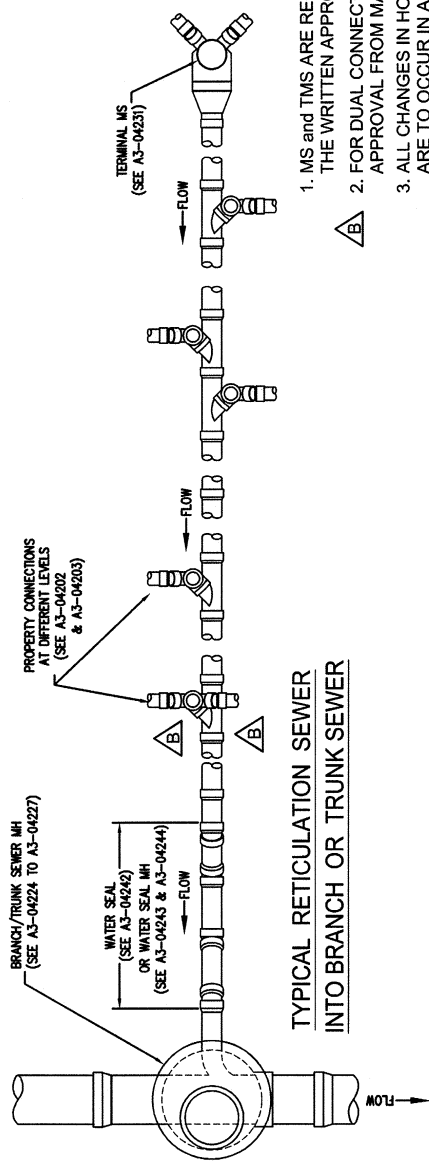


NOTES:  
1. GRADE SEWER EVENLY BETWEEN MH/MS TO LEVELS SHOWN IN DESIGN DRAWINGS.  
2. LAY PIPES AND FITTINGS WITH SOCKETS UPSTREAM WHEREVER PRACTICABLE.



1. MS and TMS ARE REQUIRED TO HAVE THE WRITTEN APPROVAL OF MACKAY WATER SERVICES.
2. FOR DUAL CONNECTIONS TO A SINGLE JUMP-UP WRITTEN APPROVAL FROM MACKAY WATER SERVICES IS REQUIRED.
3. ALL CHANGES IN HORIZONTAL DIRECTION, ARE TO OCCUR IN A MAINTENANCE HOLE.

MRC STANDARD DRAWINGS SUPERCEDES WSAA STANDARD DRAWINGS

D	5/3	AMEND	MGR. SIGN.	JC	DRAWING FILE NAME	COMMERCIAL SERVICES		Mackay REGIONAL COUNCIL	
	C	MAY08	MODIFIED TO MRC STD	SLR	M:\ES\TS\Design\Projects\STD-DWG\MACKAY WATER\WSAA MRCSEW CODE\A3-1199C	EXECUTIVE MANAGER MACKAY WATER SERVICES RPEQ 7806		STANDARD DRAWING PIPE LAYING TYPICAL ARRANGEMENTS	
B	OCT07	NOTES ADDED		NR	SURVEY N/A	WSAA NO. SEW-1103		DRAWING No. A3-04199	
A	OCT07	TFR TO MRC TBLOCK		SLR	SURVEY FILE No N/A	DATE OF LAST EDIT April 06, 2009		AMEND. D	
0					LEVEL DATUM A.H.D.	WATER SERVICES ASSOCIATION of Australia		DATE 27/5/09	
NO.	DATE	DESCRIPTION		APPVD.	MERIDIAN	MGA-55	JOB No	SHEET 1 OF 1	