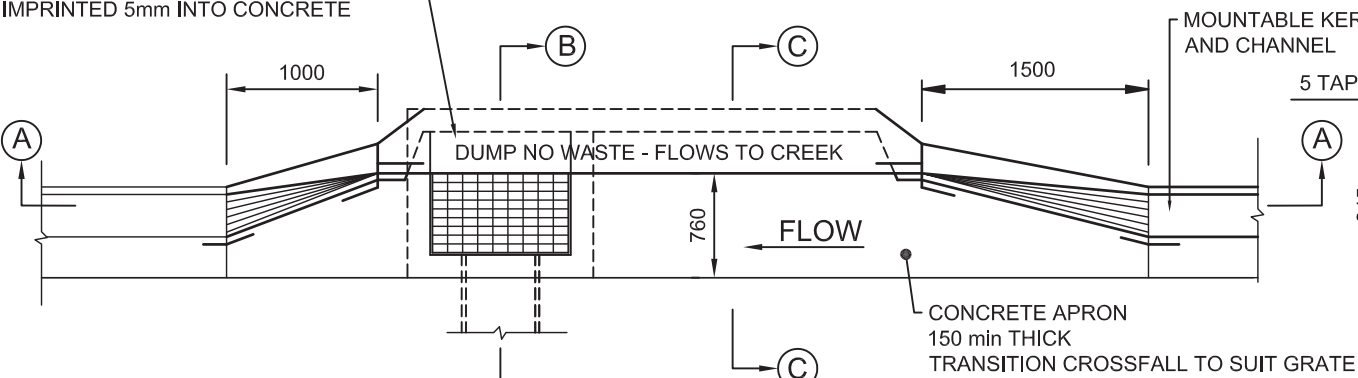


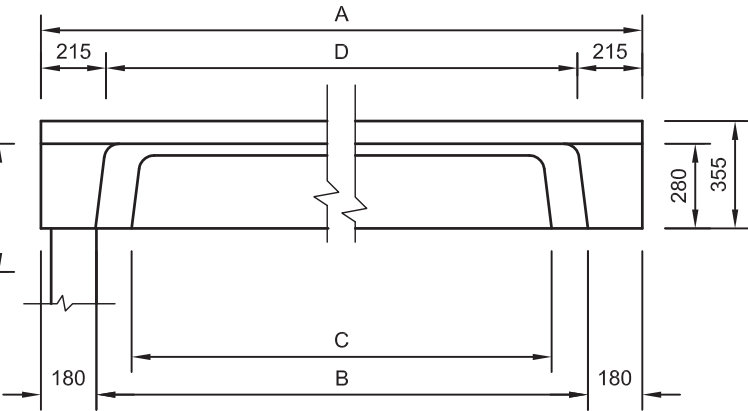
ALL TEXT TO BE : 40mm HIGH LETTERS  
IMPRINTED 5mm INTO CONCRETE



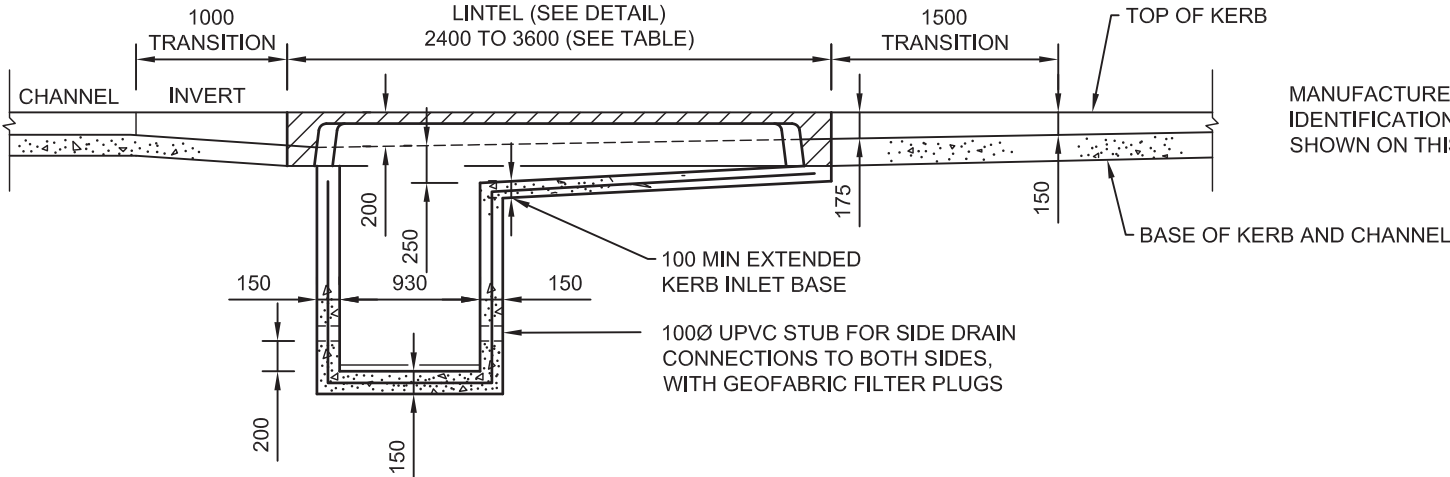
**TYPICAL INLET ON GRADE**  
**TYPE 'R' (FLOW FROM RIGHT HAND SIDE)**

75 x 10 GALV. PLATE WITH 12 Ø STUDS 300 LONG  
WELDED 150 FROM THE END  
THEN AT 300 MAX C/C  
BEND END STUDS TO MAINTAIN COVER

**LINTEL 'S' ; 'M'**  
**PLAN**

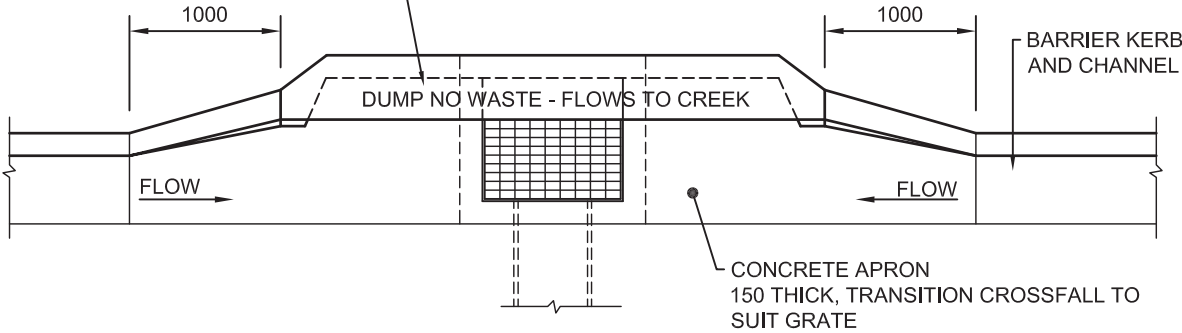


**LINTEL 'S' ; 'M'**  
**ELEVATION**



**TYPICAL INLET ON GRADE**  
**SECTION A - A**

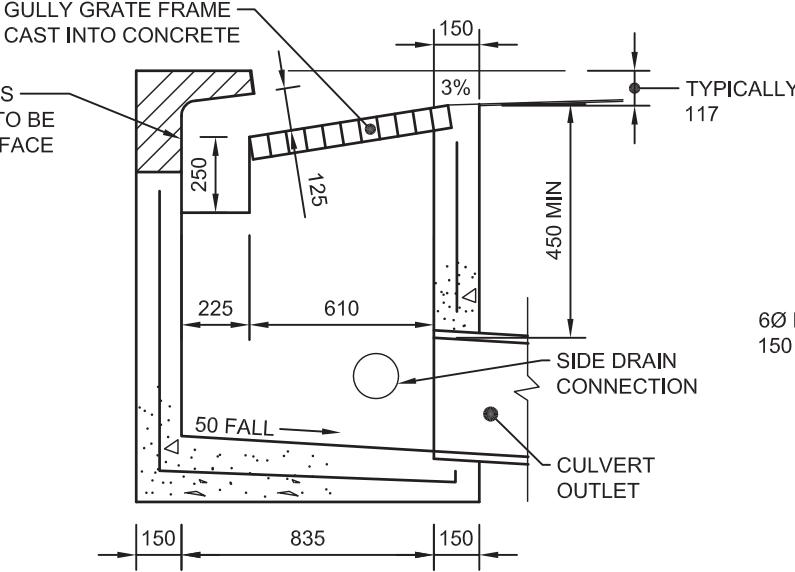
ALL TEXT TO BE : 40mm HIGH LETTERS  
IMPRINTED 5mm INTO CONCRETE



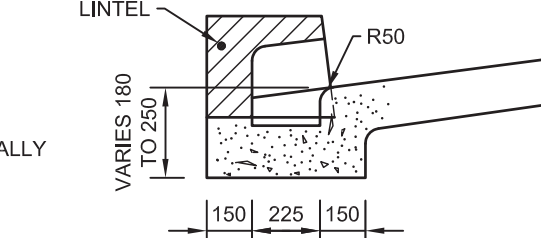
**TYPICAL INLET IN SAG**

INLET TYPE	A	B	C	D	X	MASS (KG)
S	2400	2040	1800	1970	400	445
M	3600	3240	3000	3170	690	550

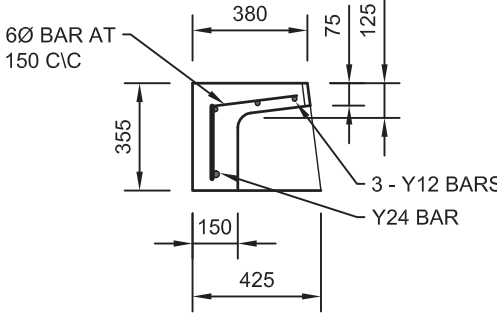
MANUFACTURER'S  
IDENTIFICATION TO BE  
SHOWN ON THIS FACE



**TYPICAL INLET ON GRADE**  
**SECTION B - B**



**TYPICAL INLET ON GRADE**  
**SECTION C - C**



**TYPICAL INLET ON GRADE**  
**SECTION D - D**

**NOTES:**

1. THE CATCHPIT MAY BE CAST IN-SITU OR PRECAST. THIS DRAWING INDICATES A CAST IN-SITU WITH A PRECAST LINTEL
2. PRECAST CONCRETE N32 IN ACCORDANCE WITH AS 1379 AND AS 3600
3. CAST IN-SITU CONCRETE N25 IN ACCORDANCE WITH AS 1379 AND AS 3600
4. EACH LIFTING ANCHOR TO BE "SWIFTLIFT" OR EQUIVALENT 1.3 TONNE, GALVANISED TO AS 1650 AND FITTED TO MANUFACTURER'S SPECIFICATION
5. REINFORCING BARS GRADE 400 TO AS 1302, PLACE CENTRALLY, 40 MIN END COVER
6. SL62 TO AS1304 STANDARD TO 3.0M DEPTH ( > 3.0M STRUCTURAL CERTIFICATES)
7. REFER STANDARD DRAWING A3-3896 FOR GRATE AND FRAME DETAILS
8. GRATE & FRAME CLASS D TO AS 3996 DESIGN LOAD. BICYCLE LOAD TESTING OF GRATES SHALL BE IN ACCORDANCE WITH AS 3996. HINGED GRATES ARE TO BE PROVIDED WITH A POSITIVE MECHANICAL RETAINER TO SECURE THEM IN POSITION WHEN OPEN
9. STEEL PLATE HOT DIP GALVANISED TO AS 1650
10. ALL DIMENSIONS IN MILLIMETRES, UNO

C	03/18	MINOR MODIFICATIONS	Gracie Hawes
B	23/1/15	REVISED FORMAT AND TITLEBLOCK	
A		ORIGINAL ISSUE	
	DATE	DESCRIPTION	APPVD
AMENDMENTS AND REVISIONS			
\\STANDARD DRAWINGS\\STORMWATER\\A3-03885			

SURVEY	DRAWN	SIGNED	DATE
SURVEY FILE No	DESIGNED	SIGNED	DATE
LEVEL DATUM	CHECKED	SIGNED	DATE 27/6/07
MERIDIAN	MANAGER TECHNICAL SERVICES		
	ORIGINAL SIGNED BY 26/7/07		
	G. HAWES RPEQ 5693 DATE		

DIRECTOR ENGINEERING AND COMMERCIAL INFRASTRUCTURE	
ORIGINAL SIGNED BY S. M. HOLLEY JASON DEVITT	
DATE 28/7/07	



**STANDARD**  
**GULLY - ROADWAY TYPE**  
**GENERAL ARRANGEMENT**  
**CHANNEL LIP LINE**

SHEET 1 OF 1	
WORKS JOB No.	
DRAWING No.	AMEND.
A3-03885	C