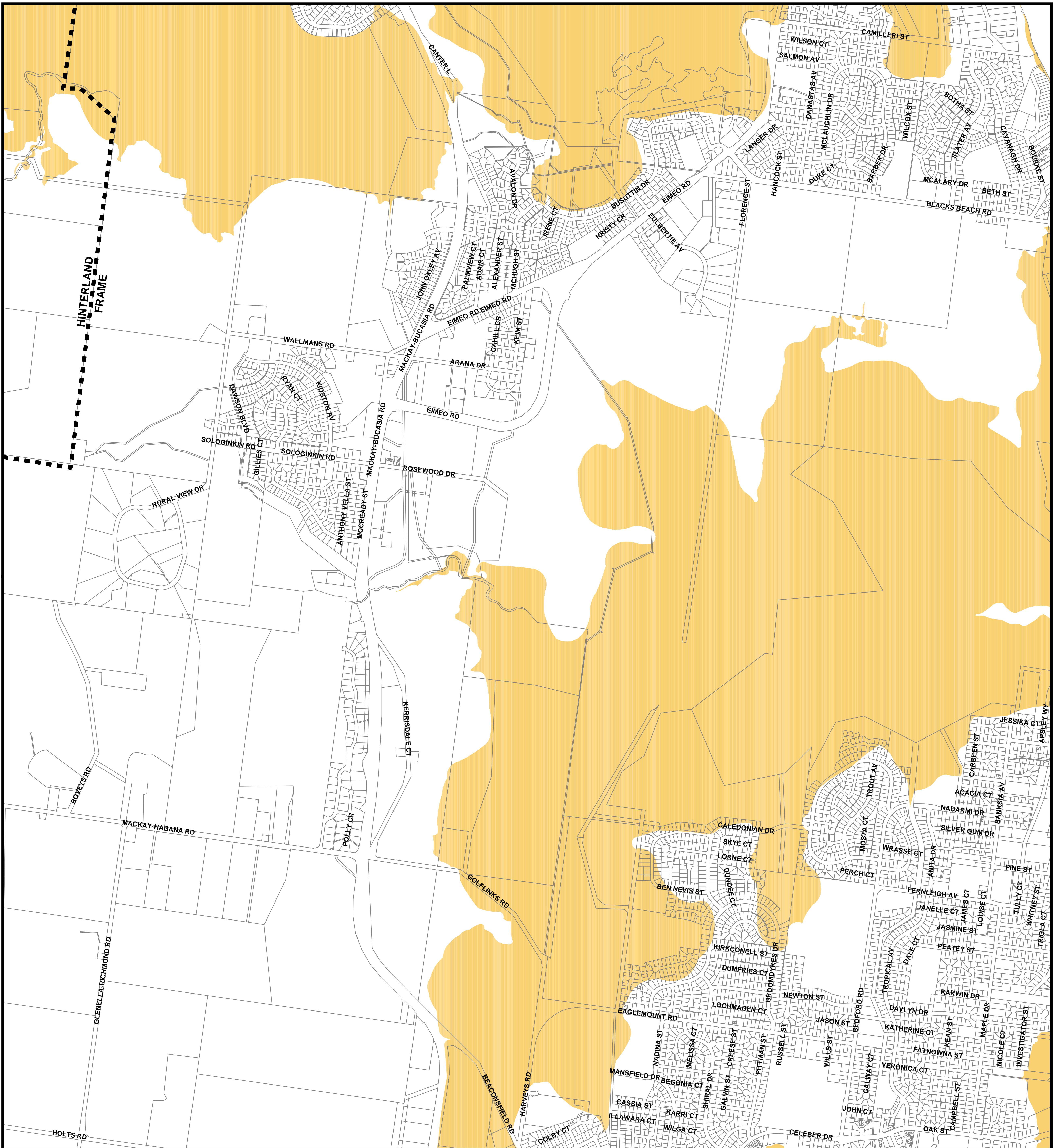


# Mackay City Council Planning Scheme

## ACID SULFATE SOILS OVERLAY

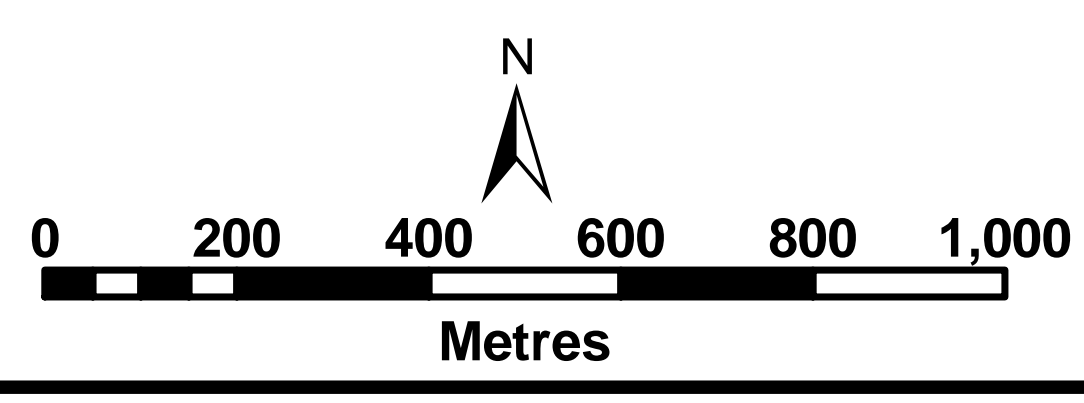


PRODUCED BY MACKAY CITY COUNCIL - GIS SECTION  
 Based on Cadastral Data provided with the permission of the  
 Department of Natural Resources ( Current as at Nov 2005 )  
 While every care is taken to ensure the accuracy of this data, the Department of Natural Resources  
 and Mackay City Council makes no representations or warranties about its accuracy, reliability,  
 completeness or suitability for any particular purpose and disclaims all responsibility and all liability  
 (including without limitation, liability in negligence) for all expenses, losses, damages (including indirect  
 or consequential damage) and costs which you might incur as a result of the data being inaccurate or  
 incomplete in any way and for any reason.

### Extent of Overlay

 Land at or below 5m AHD & identified as Potential Acid Sulfate soils

 Locality Boundaries



**Series 16 - Rural View**

The Planning Scheme took effect on 24 March 2006