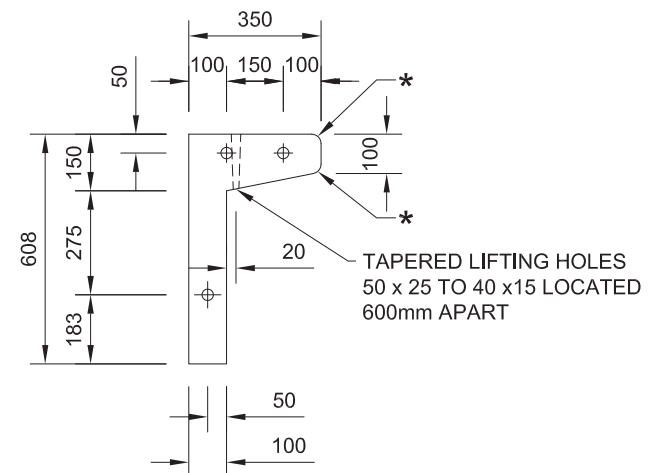
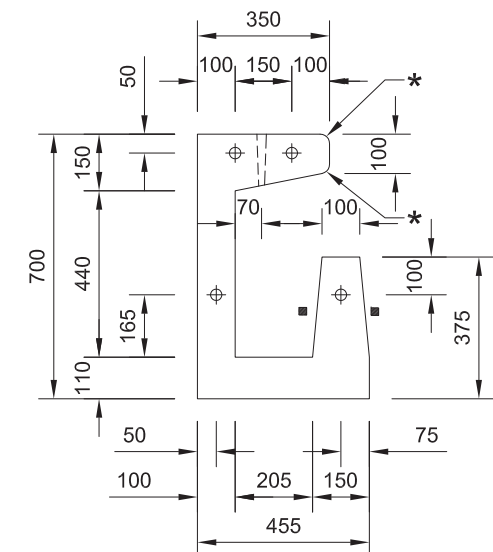


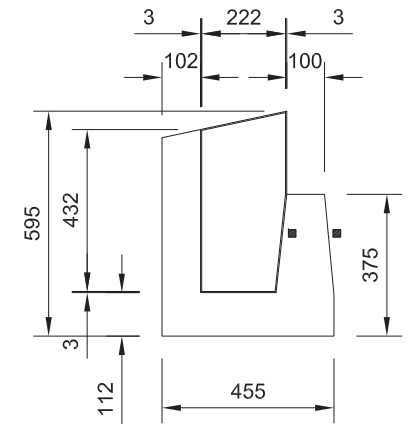
SECTION A - A



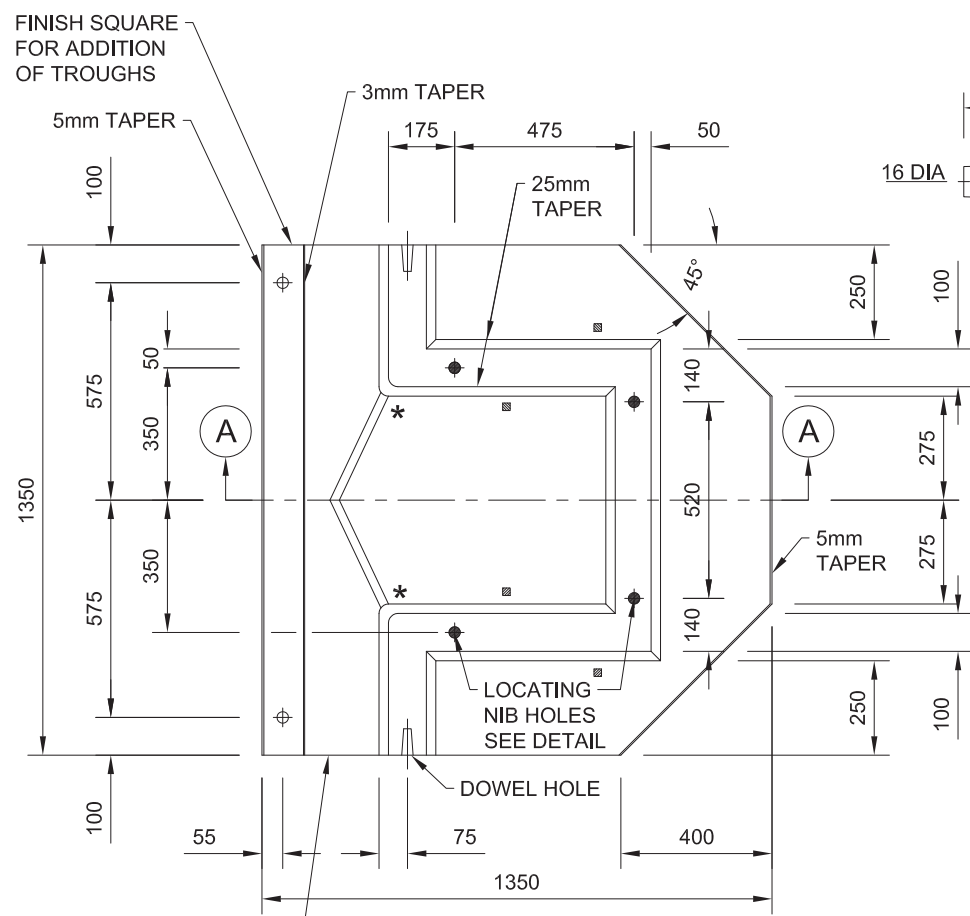
LINTEL DETAILS  
(1.35m LONG)



TROUGH DETAILS  
(1.35m LONG)



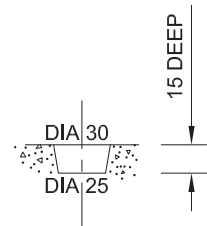
ELEVATION



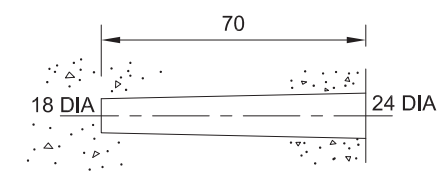
CHAMBER DETAILS  
PLAN



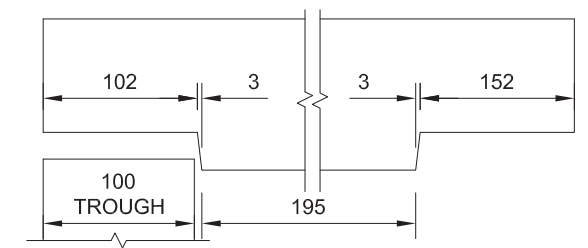
DOWEL PIN



LOCATING NIB HOLE



DOWEL HOLE

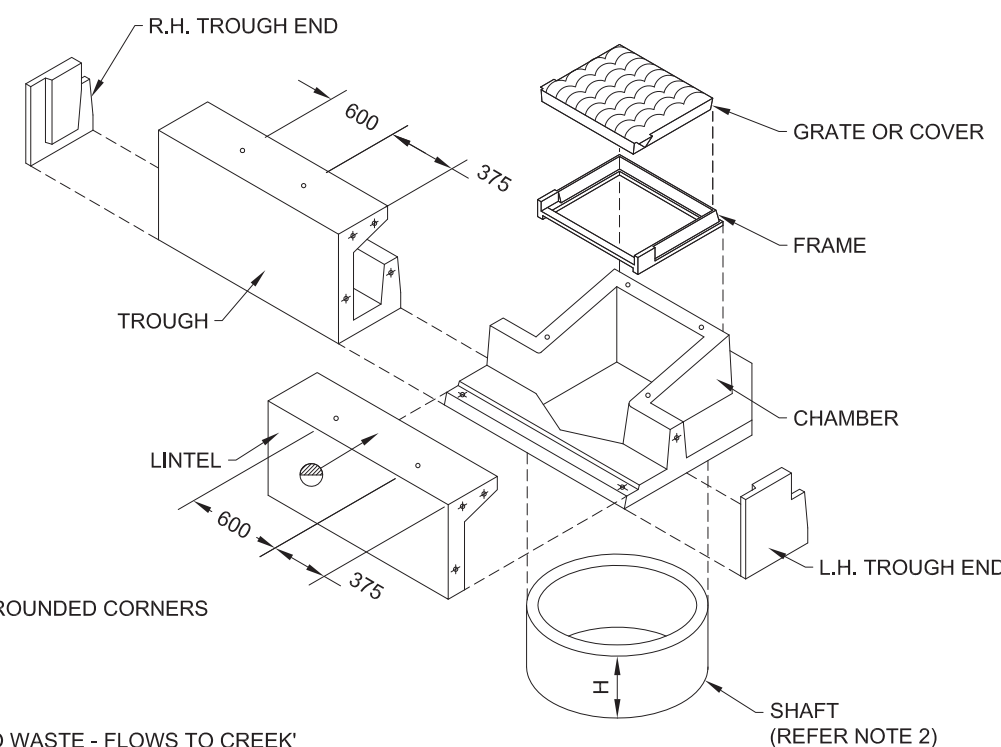


TROUGH END  
PLAN

R.H.S.  
L.H.S. SIMILAR



LEGEND

- \* 25mm RADIUS ROUNDED CORNERS
- 25mm TAPERS
- ◆ NIB HOLE
- ⊕ DOWEL HOLE
- ⊗ TEXT 'DUMP NO WASTE - FLOWS TO CREEK' (40mm HIGH LETTERS, IMPRINTED 5mm INTO CONCRETE)



NOTES

1. ALTERNATIVE ARRANGEMENTS FOR VARIOUS COMPONENTS MAY BE APPROVED SUBJECT TO THE SECTIONAL DIMENSIONS AND OVERALL EXTERNAL DIMENSIONS REMAINING UNCHANGED
2. THE STANDARD INTERNAL DIAMETER OF THE SHAFT SHALL BE 1050mm NOMINAL, EITHER INSITU OR PRECAST. WHERE LARGER SHAFTS ARE USED, CONVERTER SLABS MAY BE REQUIRED BETWEEN THE SHAFT AND CHAMBER. REFER PROJECT DRAWINGS FOR VALUE OF 'H'
3. MINIMUM CONCRETE COVER TO REINFORCEMENT SHALL BE 20mm, WHERE THE COVER IS LESS THAN 40mm, THE MAXIMUM AGGREGATE SIZE SHALL BE 12mm
4. CONCRETE N40 IN ACCORDANCE WITH AS 1379 AND AS 3600
5. REINFORCEMENT TO AS1302 SHALL BE PROVIDED BY THE DESIGNER TO OBTAIN THE STRENGTH REQUIRED TO PASS THE TEST CRITERIA DETAILED ON STANDARD DRAWING A3-3887
6. DOWEL PIN, GRADE 250 STEEL TO AS 3679, HOT-DIP GALVANIZED TO AS1650
7. GRATE & FRAME CLASS D TO AS 3996 DESIGN LOAD. BICYCLE LOAD TESTING OF GRATES SHALL BE IN ACCORDANCE WITH AS 3996. HINGED GRATES ARE TO BE PROVIDED WITH A POSITIVE MECHANICAL RETAINER TO SECURE THEM IN FIRMLY IN POSITION WHEN OPEN
8. ALL DIMENSIONS IN MILLIMETRES, UNO

				SURVEY	DRAWN	SIGNED	DATE	DIRECTOR ENGINEERING AND COMMERCIAL INFRASTRUCTURE		STANDARD  PRECAST CONCRETE SIDE INLET GULLY COMPONENTS	SHEET 1 OF 1	
C	03/18	MINOR MODIFICATIONS		SURVEY FILE No	DESIGNED	SIGNED	DATE	ORIGINAL SIGNED BY S. M. HOLLEY JASON DEVITT			WORKS JOB No.	
B	27/1/15	REVISED FORMAT AND TITLEBLOCK		LEVEL DATUM	CHECKED	SIGNED	DATE 27/6/07				DRAWING No.  A3-03886	AMEND.  C
A		ORIGINAL ISSUE		MANAGER TECHNICAL SERVICES ORIGINAL SIGNED BY G. HAWES RPEQ 5693	DATE 26/7/07	DATE 28/7/07						
	DATE	DESCRIPTION	APPVD	MERIDIAN								
AMENDMENTS AND REVISIONS												
I\STANDARD DRAWINGS\STORMWATER\A3-03886												