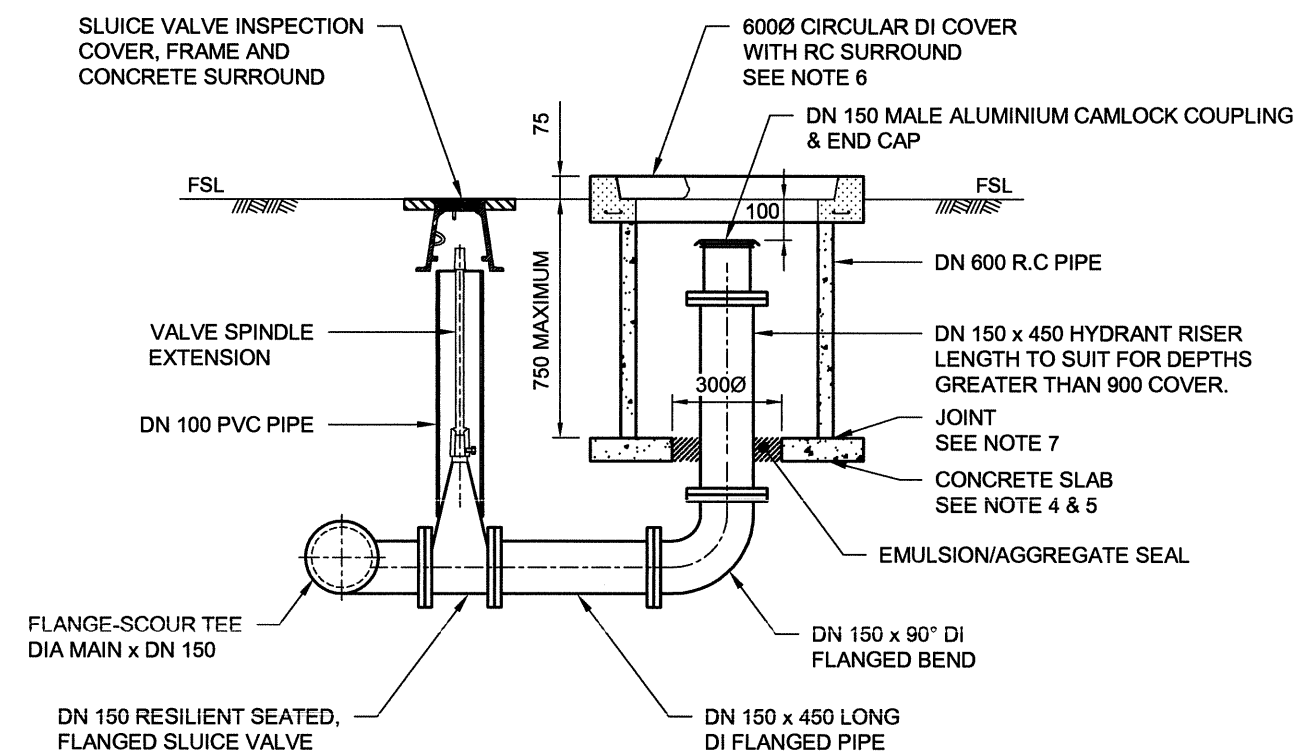
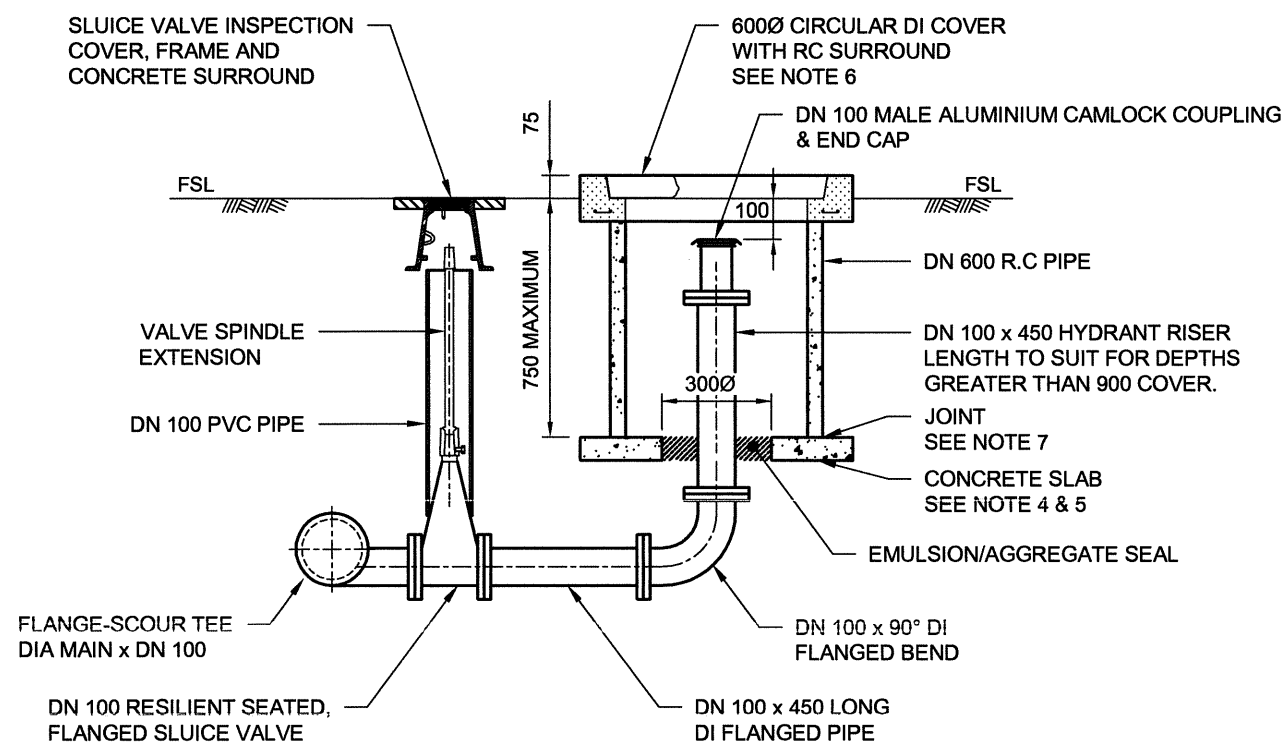


#### NOTES:

1. ALL DIMENSION IN MILLIMETRES UNO.
2. SLUICE VALVES TO BE RESILIENT SEATED TO WS-SPEC SECTION SP-21.
3. ALL BOLTS, NUTS AND WASHERS SHALL BE GRADE 316 SS.
4. CONCRETE FOR SLAB TO BE MINIMUM 100mm THICK CONCRETE N20 WITH 10mm AGGREGATE.
5. REINFORCING MESH FOR CONCRETE SLAB TO BE TO AS 1304. EQUIVALENT REINFORCEMENT IN DEFORMED BARS MAY BE USED.
6. METAL ACCESS COVERS TO BE:  
- CLASS "B" FOR FOOTWAYS  
- CLASS "D" FOR TRAFFICABLE AREAS.
7. PRECAST CHAMBERS MAY BE USED IN NON-TRAFFICABLE AREAS. JOINTS TO BE 20 TO 50 THICK FOR CEMENT MORTAR. ALTERNATIVELY, A 6 THICK BED OF BUTYL MASTIC MAY BE USED.



No.	DATE	DESCRIPTION	APVD
D	DEC/14	DETAILS AMENDED	DB
C	MAY/09	AMEND MGR SIGN	JC
B	MAY/08	MODIFIED TO MRC STD	SLR
A	OCT/07	T'FER TO MRC T'BLOCK	SLR
0		WSAA ORIG	
AMENDMENTS AND REVISIONS			

DISCLAIMER. The Mackay Regional Council shall have no liability or responsibility to the user or any other person or entity with respect to any liability, loss or damage caused or alleged to be caused, directly or indirectly, by the adoption and use of this Standard Drawing. Persons must not rely on this Standard Drawing as the equivalent of, or a substitute for, project-specific design and assessment by an appropriately qualified professional.

CHIEF OPERATING OFFICER  
WATER & WASTE SERVICES

*David Brooker*  
DAVID BROOKER  
DATE 19/12/14



SEWAGE PUMPING STATION		STANDARD DRAWING	
MOBILE PUMP CONNECTION ARRANGEMENT			
		A3-04154	D