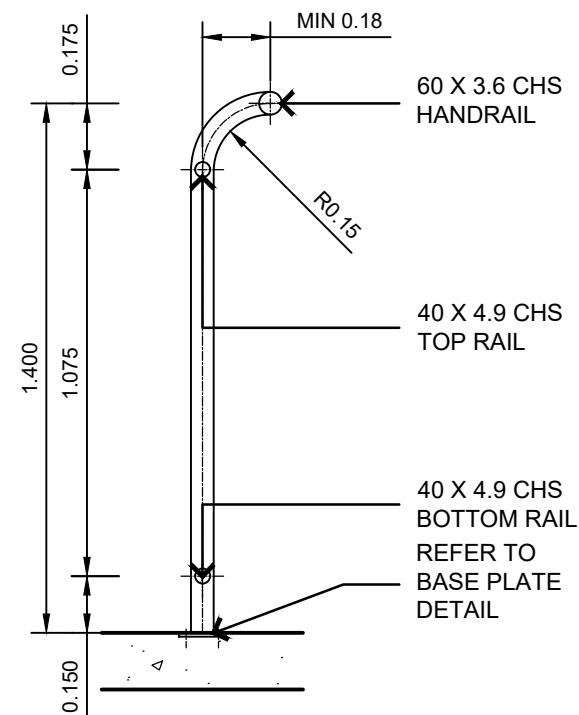
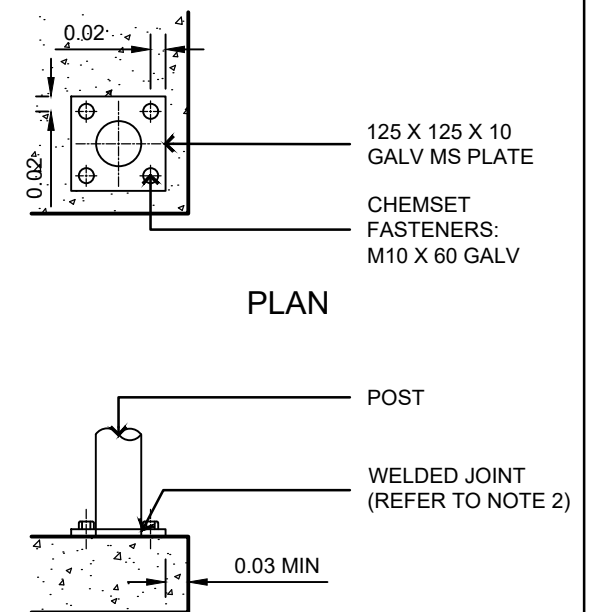


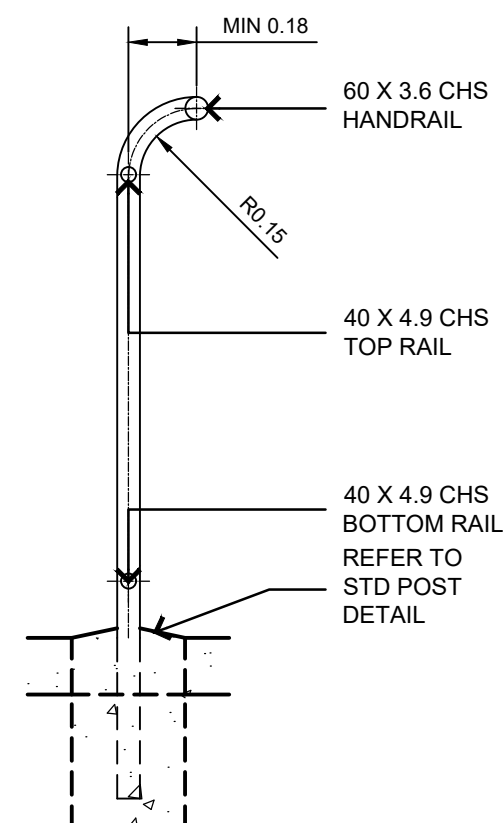
BIKE/FOOTPATH BARRIER FENCE DETAIL
1:20



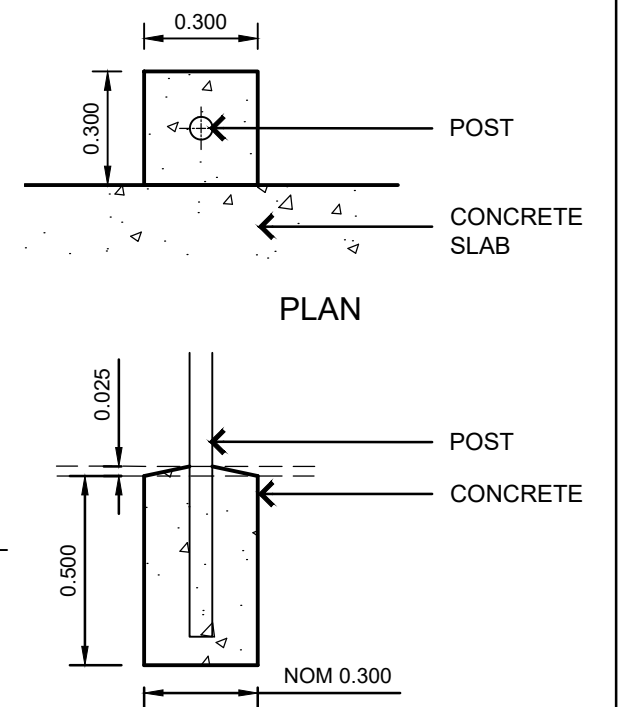
SECTION A-A DETAIL
1:20



PLAN
ELEVATION
BASE PLATE DETAIL
1:10



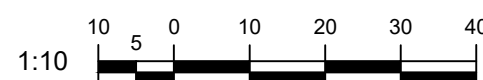
SECTION B-B DETAIL
1:20




PLAN
ELEVATION
STD POST DETAIL
1:20

NOTES:

- ALL DIMENSIONS IN MILLIMETERS UNLESS NOTED OTHERWISE.
- THE FENCE IS NOT TO BE USED IN A MARINE ENVIRONMENT. THE MARINE ENVIRONMENT CAN EXTEND UP TO 1KM FROM THE FORESHORE.
- STANDARD COUPLINGS (DOWN - EE FITTINGS, MONOWILLS, SWAGED JOINTS OR SIMILAR) MAY BE USED AS AN ALTERNATIVE TO WELDS.
- POSTS, INSTALLED IN EXISTING CONCRETE BIKEWAY/FOOTPATH SHALL BE GROUTED INTO 90 DIAMETER HOLE WITH 1:3 CEMENT MORTAR BY VOLUME AFTER ALIGNMENT, OR WITH BASE PLATES AS SHOWN.
- HAND RAIL SHALL BE FIXED AT THE BOTTOM ONLY WITH KNUCKLE JOINTS, TO PREVENT INJURIES.
- ALL STEELWORK SHALL BE HOT DIPPED GALVANISED & PAINTED G11 BOTTLE GREEN IN ACCORDANCE WITH AS/NZ 2700 COLOUR CHART TO MANUFACTURERS SPECIFICATIONS. INTERNATIONAL PROTECTIVE COATINGS STIPULATES:
 - 1ST COAT: INTERGARD 251 (75 DFT)
 - 2ND COAT: INTERTHANE 990 (50 DFT)
 - 3RD COAT: INTERTHANE 990 (50 DFT) OR EQUIVALENT SYSTEM



				SURVEY	DRAWN TLK	SIGNED T. L. KENNEDY	DATE 06.11.01	DIRECTOR ENGINEERING AND COMMERCIAL INFRASTRUCTURE		STANDARD BIKEWAY/FOOTPATH BARRIER FENCE	SHEET 1 OF 1	
B	22.02.17	REVISED FORMAT		SURVEY FILE No	DESIGNED TLK	SIGNED T.L. KENNEDY	DATE 06.11.01				WORKS JOB No.	
A	06/11/01	ORIGINAL ISSUE		LEVEL DATUM	CHECKED CEB	SIGNED C. E. BROWN	DATE 06.11.01				DRAWING No.	AMEND.
	DATE	DESCRIPTION		APPVD	EXECUTIVE MANAGER			ORIGINAL SIGNED BY STUART HOLLEY				
AMENDMENTS AND REVISIONS				MERIDIAN	SIGNED BY J.CLARKE RPEQ 5625 STUART HOLLEY			DATE 07/11/01				
K:\Technical Services\Design\Projects\Standard drawings\General\AutoCAD												