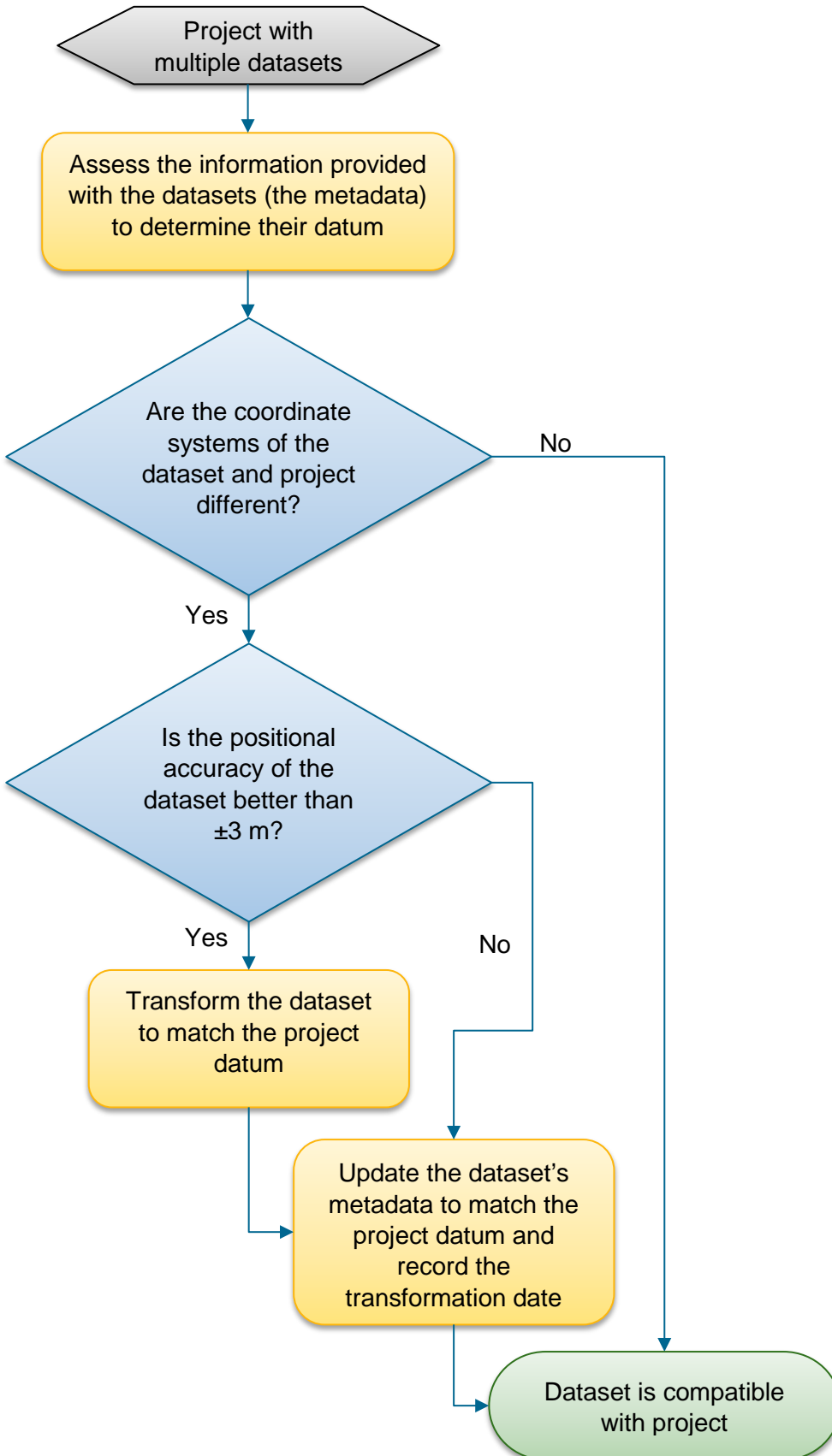


Do I need to transform my data?



This fact sheet provides a high-level overview of the datum transformation process for people incorporating one or more datasets from different sources into an existing project.

Further Information

More detailed data transformation flowcharts are available on the Department of Natural Resources, Mines, and Energy GDA2020 website:
<https://www.dnrme.qld.gov.au/titles-valuations/initiatives/gda2020-queensland>

General information and resources relating to the datum modernisation – including a simple explanatory animation, frequently asked questions, fact sheets, technical tools and progress updates – are available on the ICSM website:
www.icsm.gov.au



A note about Mackay Regional Council's datasets

From 1 July 2020, Mackay Regional Council's GIS system will be GDA2020 enabled and the spatial component of the datasets that integrate into the GIS will be transformed and provided in GDA2020/MGA2020 coordinates.

However, it was decided that there would be little benefit in transforming some datasets, including:

- Historical LIDAR (2009, 2015) XY tiles
- Historical Imagery (captured 2019 or prior) in ECW format
- Flood modelling and result files for studies commenced prior to 1 July 2020
- Raw mobile laser scanning data
- Surveys commenced prior to 1 July 2020 and the resultant deliverables for construction projects

Derivative datasets that are stored on the GIS server (e.g. contours, flood overlays, and floor levels) have been transformed to GDA2020, but the original datasets have been archived in the datum they were collected in.

If you are using any of these historical datasets, be aware that you may have to transform the data to ensure it is compatible with the project you are working on. Further guidance on how to go about this is provided in other fact sheets in this series and on the DNRME and ICSM websites.

As with any dataset it is important that you remember:

“Know your data, know your datum”