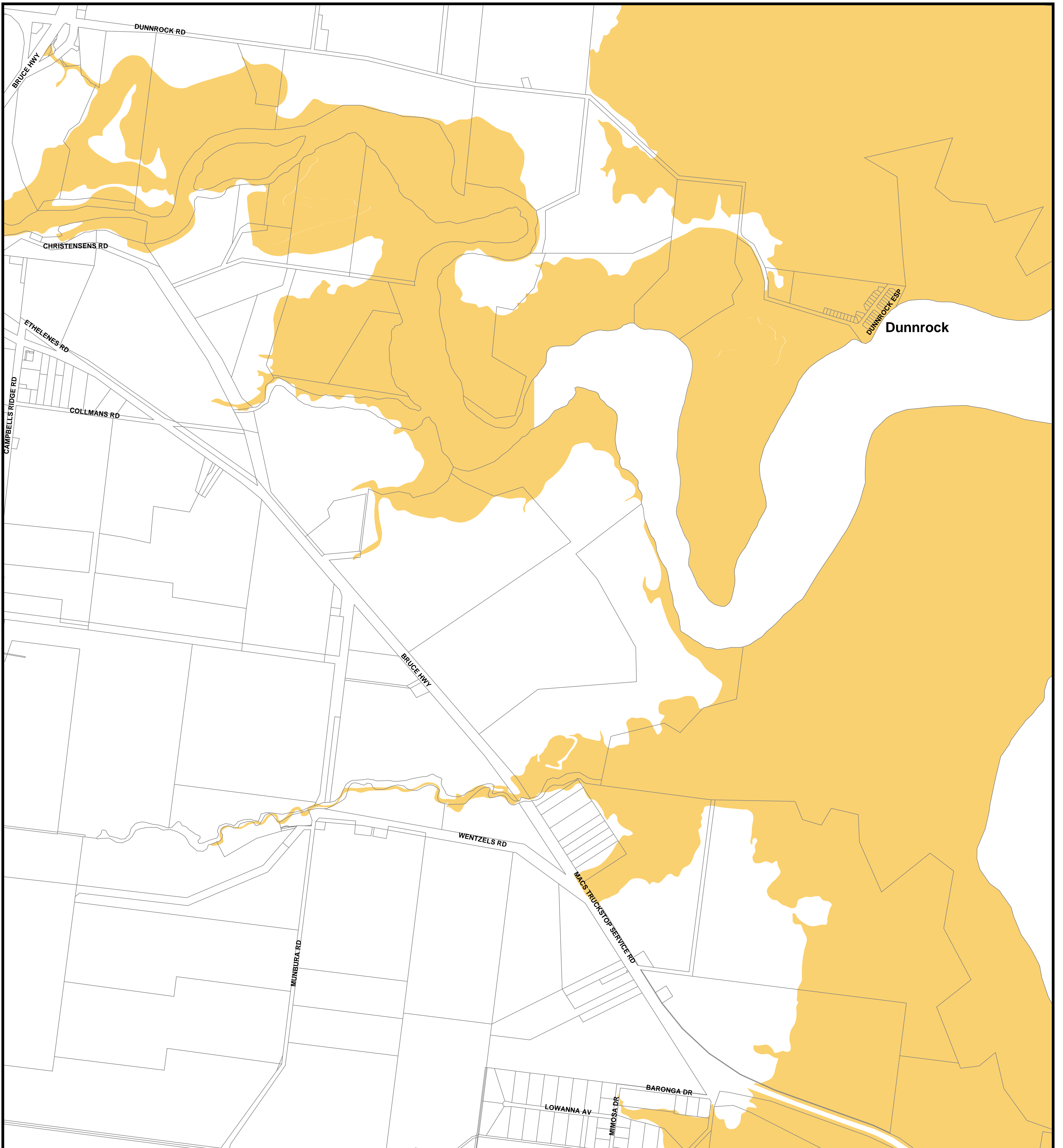


Mackay City Council Planning Scheme

ACID SULFATE SOILS OVERLAY

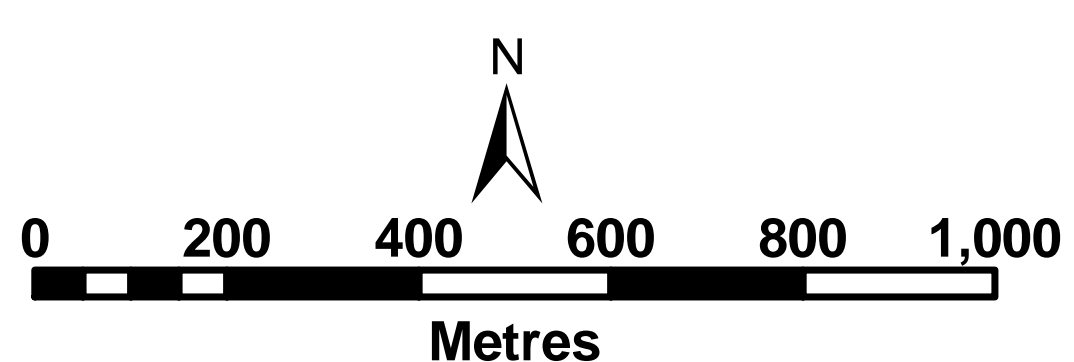


PRODUCED BY MACKAY CITY COUNCIL - GIS SECTION
 Based on Cadastral Data provided with the permission of the
 Department of Natural Resources (Current as at Nov 2005)
 While every care is taken to ensure the accuracy of this data, the Department of Natural Resources
 and Mackay City Council makes no representations or warranties about its accuracy, reliability,
 completeness or suitability for any particular purpose and disclaims all responsibility and all liability
 (including without limitation, liability in negligence) for all expenses, losses, damages (including indirect
 or consequential damage) and costs which you might incur as a result of the data being inaccurate or
 incomplete in any way and for any reason.

Extent of Overlay

 Land at or below 5m AHD & identified as Potential Acid Sulfate soils

■■■ Locality Boundaries



Series 30 - Dunnrock

The Planning Scheme took effect on 24 March 2006

Feb 03, 2006